

EVACUATION DIAGRAM

first 5 minutes
Experience makes all the difference.



Phone: 1300 321 120
Website: first5minutes.com.au



ACTION OF DISCOVERY OF FIRE

REMOVE PEOPLE

if safe to do so, remove or rescue any persons in immediate danger.

ALERT

nearby staff and members of the public and follow your emergency procedures.

CONFINE FIRE AND SMOKE

close windows and doors (if safe to do so) keep low under the smoke.

EVACUATE / EXTINGUISH

Evacuate to the Assembly Area and remain there until advised otherwise by a person in authority. Extinguish the fire only if trained in the use of the equipment and it is safe to do so.

STAGES OF EVACUATION

Evacuation should be conducted in three distinct stages depending on the severity of the incident.

STAGE 1 - REMOVAL OF PERSONS FROM THE IMMEDIATE DANGER AREA

Occupants are removed from the affected compartment into the next compartment, eg from a room into a corridor. Doors should be closed to confine smoke and fire in the affected compartment.

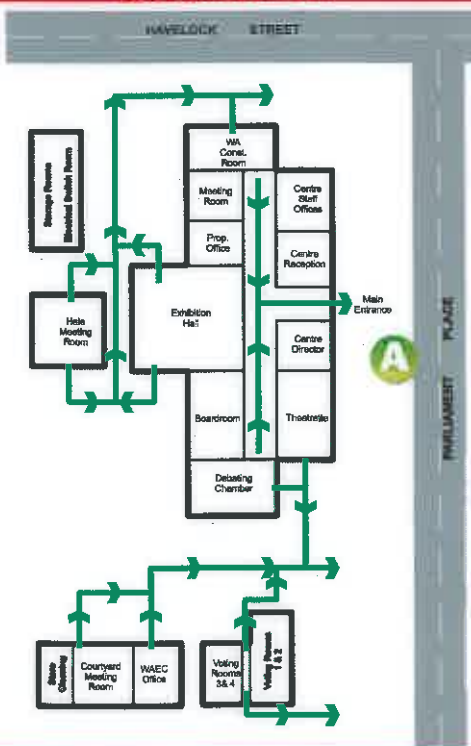
STAGE 2 - REMOVAL TO A SAFE AREA

If the severity of smoke or heat warrants further evacuation, occupants and visitors should be moved to safe areas on the same level.

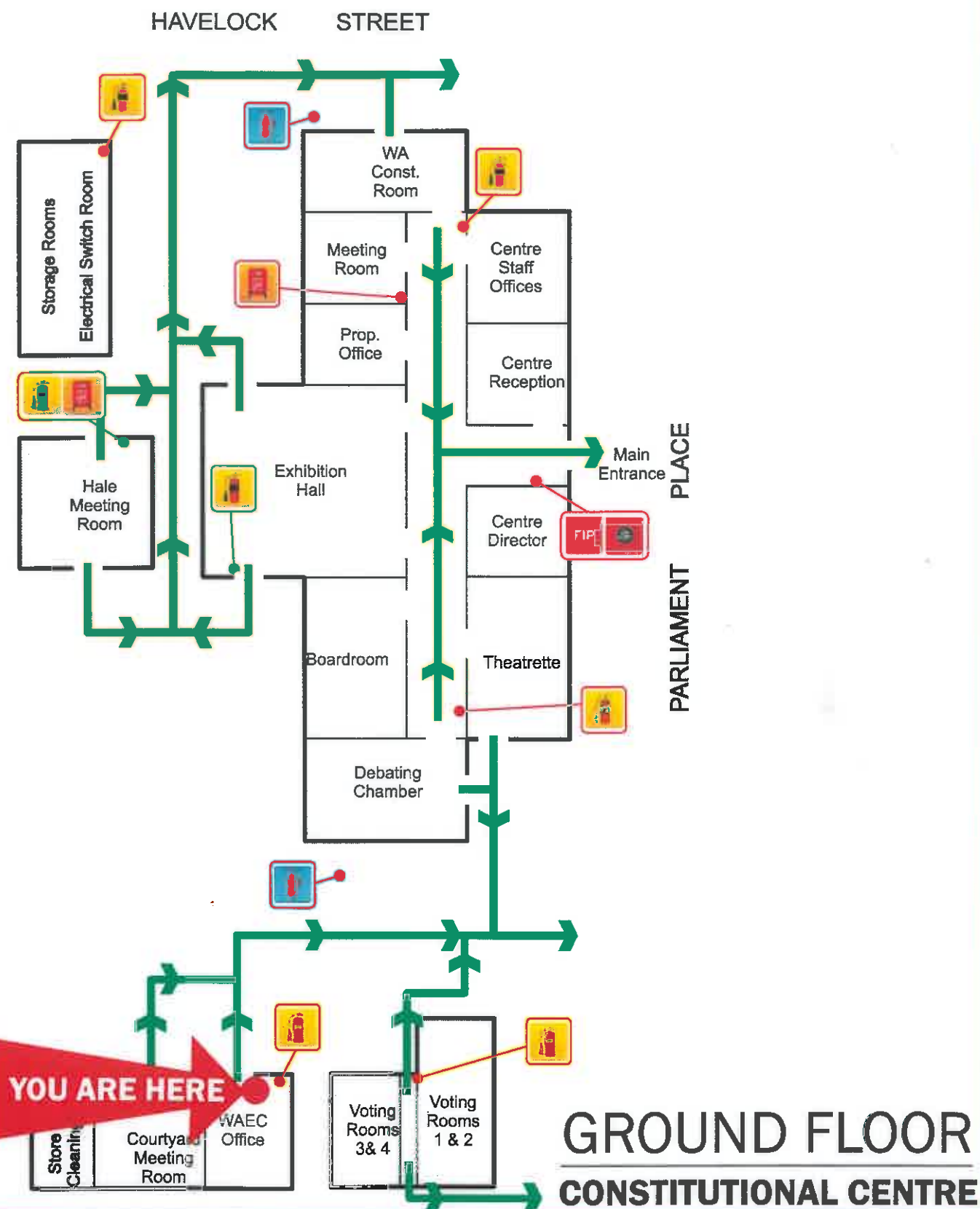
STAGE 3 - COMPLETE EVACUATION OF THE FLOOR

Should the emergency necessitate evacuation of the affected floor, Wardens are to direct occupants to the assembly area via the emergency exits.

ASSEMBLY AREA



Issued: 4 April 2011
(Valid for a period of 5 years)



GROUND FLOOR
CONSTITUTIONAL CENTRE



**CONSTITUTIONAL CENTRE OF WA
FIRE EVACUATION ASSEMBLY MAP**

