



WESTERN AUSTRALIAN Electoral Commission

ELECTORAL ENROLMENT STATISTICS

30 June 2003

This report details State enrolment figures as at 30 June 2003 and show that on that date the total State enrolment was 1,209,933.

This report includes figures that illustrate the percentage change in total enrolment for each electoral district since 7 February 1994. Enrolment figures taken at that date were used to calculate the quotas on which the distribution of electoral boundaries currently in force was based.

Additional statistics have been included to show the enrolment figures as at 18 January 2001, which was the date of the close of roll for the State general election held on 10 February 2001.

Lyn Auld
ELECTORAL COMMISSIONER

23 July 2003

Contact Details:

Western Australian Electoral Commission
Level 2 111 St Georges Terrace PERTH WA 6000
Postal Address: GPO Box F316 PERTH WA 6841

Phone: (08) 9214 0400
Phone: 13 63 06 (WA callers only)
Facsimile: (08) 9226 0577
Internet: www.waec.wa.gov.au
Email: waec@waec.wa.gov.au

Contents	Page No.
<i>State Enrolment</i>	3
<i>Monthly Metropolitan and Country Enrolments and Quotients April 1996 to June 2003</i>	4
<i>Metropolitan Area Enrolment Statistics</i>	5
<i>Country Area Enrolment Statistics</i>	8
<i>Metropolitan and Country Enrolments and Quotients as at 7.2.1994, 10.2.2001 and 30.6.2003</i>	11
<i>Legislative Council Regional Enrolments at 7.2.1994, 10.2.2001 and 30.6.2003</i>	11
<i>Regional Enrolments and Quotient by Districts as at 7.2.1994, 10.2.2001 and 30.6.2003</i>	12
<i>Range of Enrolments as at 7.2.1994, 10.2.2001 and 30.6.2003</i>	30

STATE ENROLMENT

18 January 1993	1,016,750		<i>Close of role for 1993 State General Election.</i>
7 February 1994	1,034,006	Increase from 1993 to February 1994 is 17,256 or 1.70%	<i>Relevant date under section 2A(5) of the Electoral Distribution Act 1947 for the determination of quotients for the 1994 Division of the State.</i>
22 November 1996	1,119,992	Increase from 1993 to November 1996 is 103,242 or 10.15%	<i>Close of roll for 1996 State General Election.</i>
18 January 2001	1,193,508	Increase from November 1996 to 18 January 2001 is 73,516 or 6.56%	<i>Close of roll for the 10 February 2001 State General Election</i>
30 June 2003	1,209,933	Increase from 18 January 2001 to 30 June 2003 is 16,425 or 1.38%	

MONTHLY ENROLMENTS AND QUOTIENTS

Year	Month	Metropolitan Enrolment	Metropolitan Quotient	Country Enrolment	Country Quotient	Total Enrolment	
1996	April	808,234	23,772	284,756	12,381	1,092,990	
	May	816,142	24,004	287,356	12,494	1,103,498	
	June	816,713	24,021	288,071	12,525	1,104,784	
	July	817,089	24,032	288,593	12,548	1,105,682	
	August	817,486	24,044	288,753	12,554	1,106,239	
	September	818,271	24,067	289,585	12,591	1,107,856	
	October	819,168	24,093	289,832	12,601	1,109,000	
	November	827,001	24,324	292,991	12,739	1,119,992	
	December	822,381	24,188	292,079	12,699	1,114,460	
	1997	January	824,333	24,245	292,785	12,730	1,117,118
		February	825,082	24,267	292,993	12,739	1,118,075
		March	826,887	24,320	293,236	12,749	1,120,123
April		827,373	24,335	293,377	12,756	1,120,750	
May		828,242	24,360	293,422	12,757	1,121,664	
June		826,728	24,316	293,249	12,750	1,119,977	
July		826,916	24,321	293,201	12,748	1,120,117	
August		826,941	24,322	293,094	12,743	1,120,035	
September		826,882	24,320	292,760	12,729	1,119,642	
October		829,305	24,391	293,045	12,741	1,122,350	
November		830,170	24,417	293,151	12,746	1,123,321	
December		830,361	24,422	293,233	12,749	1,123,594	
1998	January	831,031	24,442	293,084	12,743	1,124,115	
	February	828,413	24,365	292,552	12,720	1,120,965	
	March	839,238	24,683	292,822	12,731	1,132,060	
	April	849,048	24,972	294,981	12,825	1,144,029	
	May	847,711	24,933	296,249	12,880	1,143,960	
	June	836,701	24,609	292,717	12,727	1,129,418	
	July	832,848	24,496	292,138	12,702	1,124,986	
	August	832,254	24,478	292,475	12,716	1,124,729	
	September	847,990	24,941	298,062	12,959	1,146,052	
	October	855,978	25,176	299,894	13,039	1,155,872	
	November	860,979	25,323	302,903	13,170	1,163,882	
	December	861,682	25,344	303,807	13,209	1,165,489	
1999	January	860,481	25,308	302,976	13,173	1,163,457	
	February	856,579	25,194	300,323	13,058	1,156,902	
	March	857,731	25,227	300,570	13,068	1,158,301	
	April	858,001	25,235	300,713	13,074	1,158,714	
	May	857,877	25,232	300,928	13,084	1,158,805	
	June	857,265	25,214	300,153	13,050	1,157,418	
	July	860,418	25,306	291,352	12,667	1,151,770	
	August	851,944	25,057	299,240	13,010	1,151,184	
	September	852,909	25,086	299,800	13,035	1,152,709	
	October	868,183	25,535	304,287	13,230	1,172,470	
	November	873,224	25,683	305,900	13,300	1,179,124	
	December	876,994	25,794	307,380	13,364	1,184,374	
2000	January	876,303	25,774	307,215	13,357	1,183,518	
	February	876,418	25,777	307,578	13,373	1,183,996	
	March	872,006	25,647	307,040	13,350	1,179,046	
	April	872,350	25,657	307,084	13,351	1,179,434	
	May	867,196	25,506	304,810	13,252	1,172,006	
	June	865,058	25,443	304,614	13,244	1,169,672	
	July	865,381	25,453	304,692	13,248	1,170,073	
	August	864,188	25,417	304,456	13,237	1,168,644	
	September	865,792	25,464	305,127	13,266	1,170,919	
	October	869,341	25,569	305,981	13,303	1,175,322	
	November	870,634	25,607	305,826	13,297	1,176,460	
	December	872,645	25,666	306,293	13,317	1,178,938	
2001	January	883,721	25,992	309,787	13,469	1,193,508	
	February	888,690	26,138	311,181	13,530	1,199,871	
	March	891,627	26,224	312,767	13,599	1,204,394	
	April	891,014	26,206	312,448	13,585	1,203,462	
	May	894,058	26,296	312,875	13,603	1,206,933	
	June	893,829	26,289	312,907	13,605	1,206,736	
	July	880,674	25,902	310,170	13,486	1,190,844	
	August	882,124	25,945	310,573	13,503	1,192,697	
	September	887,452	26,102	312,231	13,575	1,199,683	
	October	907,690	26,697	299,321	13,014	1,207,011	
	November	895,887	26,350	315,096	13,700	1,210,983	
	December	901,859	26,525	317,120	13,789	1,218,979	
2002	January	903,320	26,568	317,280	13,795	1,220,600	
	February	902,507	26,544	316,840	13,776	1,219,347	
	March	898,463	26,425	315,927	13,736	1,214,390	
	April	897,458	26,396	315,462	13,716	1,212,920	
	May	895,403	26,335	315,143	13,702	1,210,546	
	June	892,013	26,236	314,712	13,683	1,206,725	
	July	890,463	26,190	314,002	13,653	1,204,465	
	August	890,930	26,204	314,291	13,665	1,205,221	
	September	893,310	26,274	315,166	13,703	1,208,476	
	October	894,850	26,319	316,022	13,740	1,210,872	
	November	897,970	26,411	316,223	13,749	1,214,193	
	December	899,158	26,446	316,385	13,756	1,215,543	
2003	January	897,871	26,408	316,269	13,751	1,214,140	
	February	892,743	26,257	315,421	13,714	1,208,164	
	March	895,109	26,327	316,595	13,765	1,211,704	
	April	895,715	26,345	316,352	13,754	1,212,067	
	May	895,847	26,348	316,590	13,765	1,212,437	
	June	893,961	26,293	315,972	13,738	1,209,933	

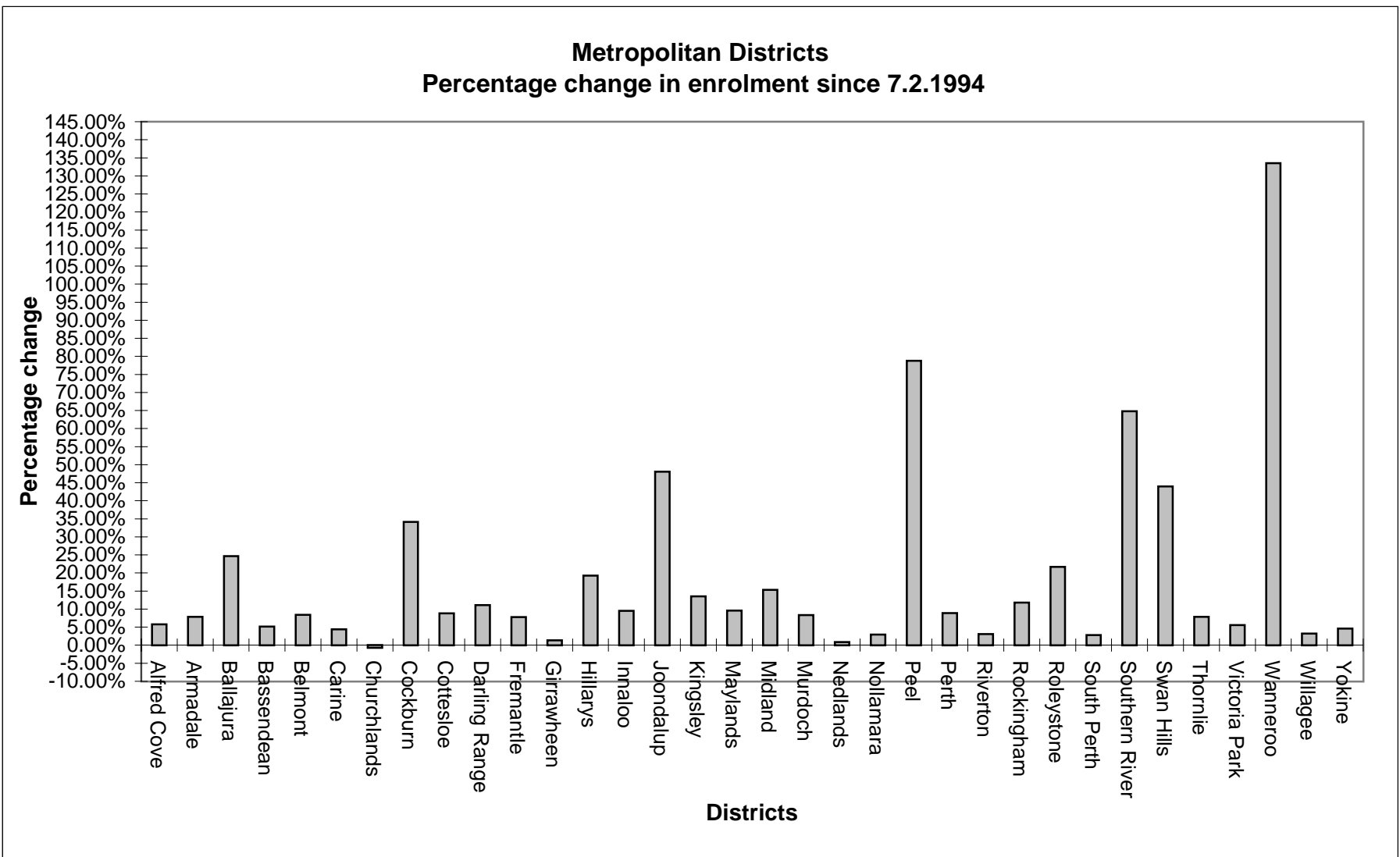
Note: The above quotient figures are determined by dividing the total enrolments (number of electors) for that area by the number of districts in that area (34 in the Metropolitan and 23 in the Country)

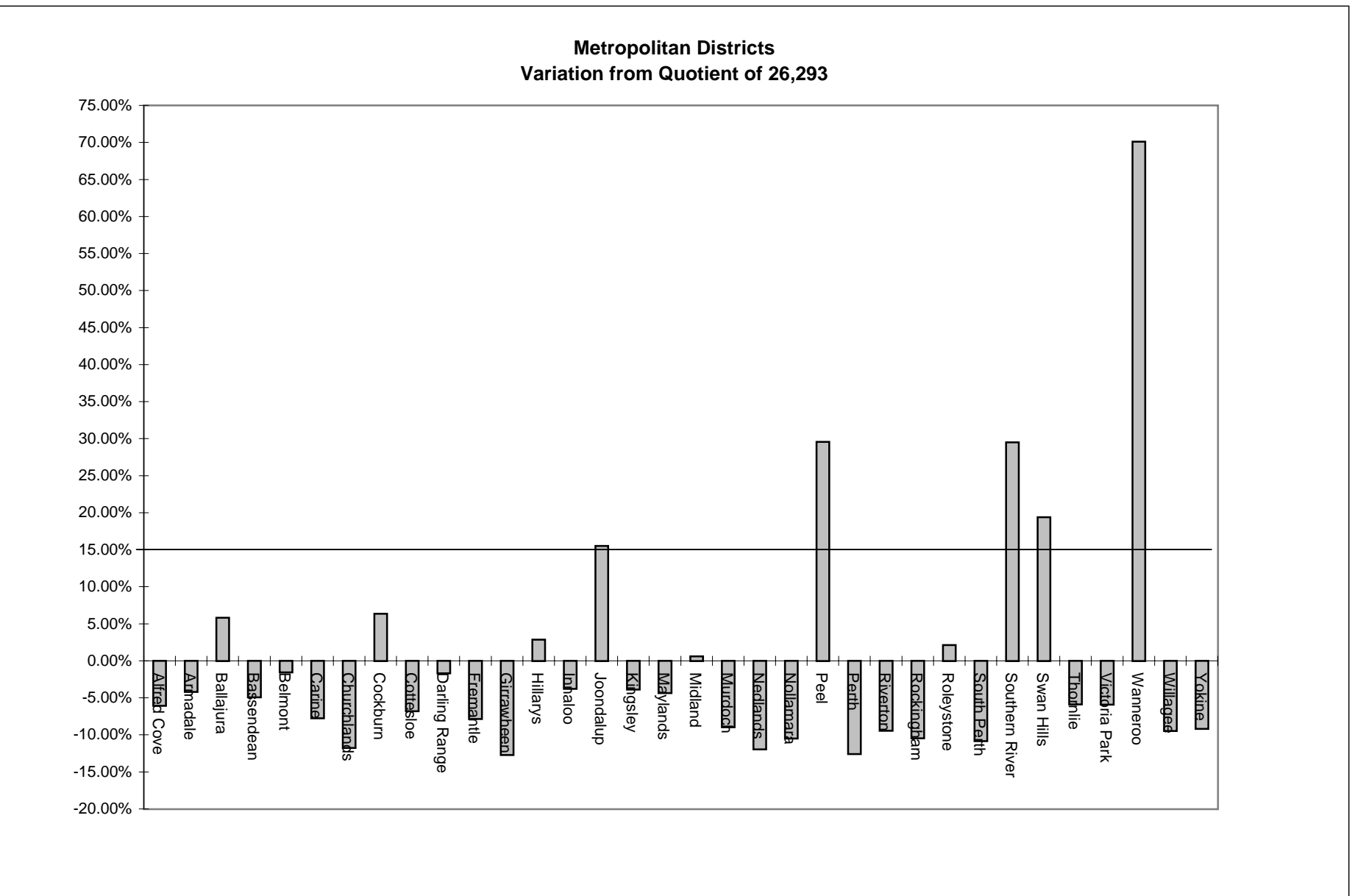
Legislative Assembly

METROPOLITAN AREA ENROLMENT STATISTICS

District	Enrolment 7.2.1994	Variation from Quotient	Enrolment 10.2.2001	Variation from Quotient	Enrolment 30.6.2003	Variation from Quotient	% change in enrolment 7.2.1994 to 30.6.2003
Alfred Cove	23,362	4.43%	24,717	-4.90%	24,707	-6.03%	5.76%
Armadale	23,369	4.46%	25,712	-1.08%	25,198	-4.16%	7.83%
Ballajura	22,322	-0.22%	27,974	7.63%	27,826	5.83%	24.66%
Bassendean	23,784	6.32%	25,209	-3.01%	25,002	-4.91%	5.12%
Belmont	23,885	6.77%	25,740	-0.97%	25,891	-1.53%	8.40%
Carine	23,238	3.88%	24,928	-4.09%	24,257	-7.74%	4.39%
Churchlands	23,356	4.41%	23,877	-8.14%	23,210	-11.73%	-0.63%
Cockburn	20,847	-6.81%	26,729	2.84%	27,968	6.37%	34.16%
Cottesloe	22,527	0.70%	24,767	-4.71%	24,510	-6.78%	8.80%
Darling Range	23,275	4.04%	26,003	0.04%	25,857	-1.66%	11.09%
Fremantle	22,481	0.49%	24,410	-6.09%	24,236	-7.82%	7.81%
Girrawheen	22,652	1.26%	23,320	-10.28%	22,953	-12.70%	1.33%
Hillarys	22,674	1.36%	27,478	5.72%	27,047	2.87%	19.29%
Innaloo	23,106	3.29%	25,267	-2.79%	25,310	-3.74%	9.54%
Joondalup	20,513	-8.30%	29,490	13.46%	30,374	15.52%	48.07%
Kingsley	22,268	-0.46%	25,784	-0.80%	25,284	-3.84%	13.54%
Maylands	22,951	2.60%	24,797	-4.60%	25,155	-4.33%	9.60%
Midland	22,937	2.53%	26,647	2.52%	26,454	0.61%	15.33%
Murdoch	22,106	-1.18%	24,149	-7.09%	23,944	-8.93%	8.31%
Nedlands	22,954	2.61%	23,729	-8.71%	23,155	-11.93%	0.88%
Nollamara	22,867	2.22%	24,001	-7.66%	23,539	-10.47%	2.94%
Peel	19,056	-14.82%	31,460	21.04%	34,067	29.57%	78.77%
Perth	21,120	-5.59%	22,534	-13.30%	22,992	-12.55%	8.86%
Riverton	23,106	3.29%	24,247	-6.71%	23,818	-9.41%	3.08%
Rockingham	21,062	-5.85%	23,875	-8.14%	23,548	-10.44%	11.80%
Roleystone	22,061	-1.38%	26,302	1.19%	26,850	2.12%	21.71%
South Perth	22,811	1.97%	23,964	-7.80%	23,448	-10.82%	2.79%
Southern River	20,663	-7.63%	31,638	21.72%	34,051	29.51%	64.79%
Swan Hills	21,804	-2.53%	29,000	11.57%	31,394	19.40%	43.98%
Thornlie	22,948	2.58%	24,805	-4.57%	24,756	-5.85%	7.88%
Victoria Park	23,435	4.76%	24,859	-4.36%	24,744	-5.89%	5.59%
Wanneroo	19,153	-14.38%	37,900	45.82%	44,725	70.10%	133.51%
Willagee	23,071	3.13%	23,974	-7.76%	23,810	-9.44%	3.20%
Yokine	22,831	2.06%	24,435	-5.99%	23,881	-9.17%	4.60%
Total	760,595		883,721		893,961		17.53%
	Quotient	22,370	Quotient	25,992	Quotient	26,293	

Note: The date 7.2.1994 is significant because it is the date on which the quotients for the present electoral boundaries were determined for the last Division of the State.



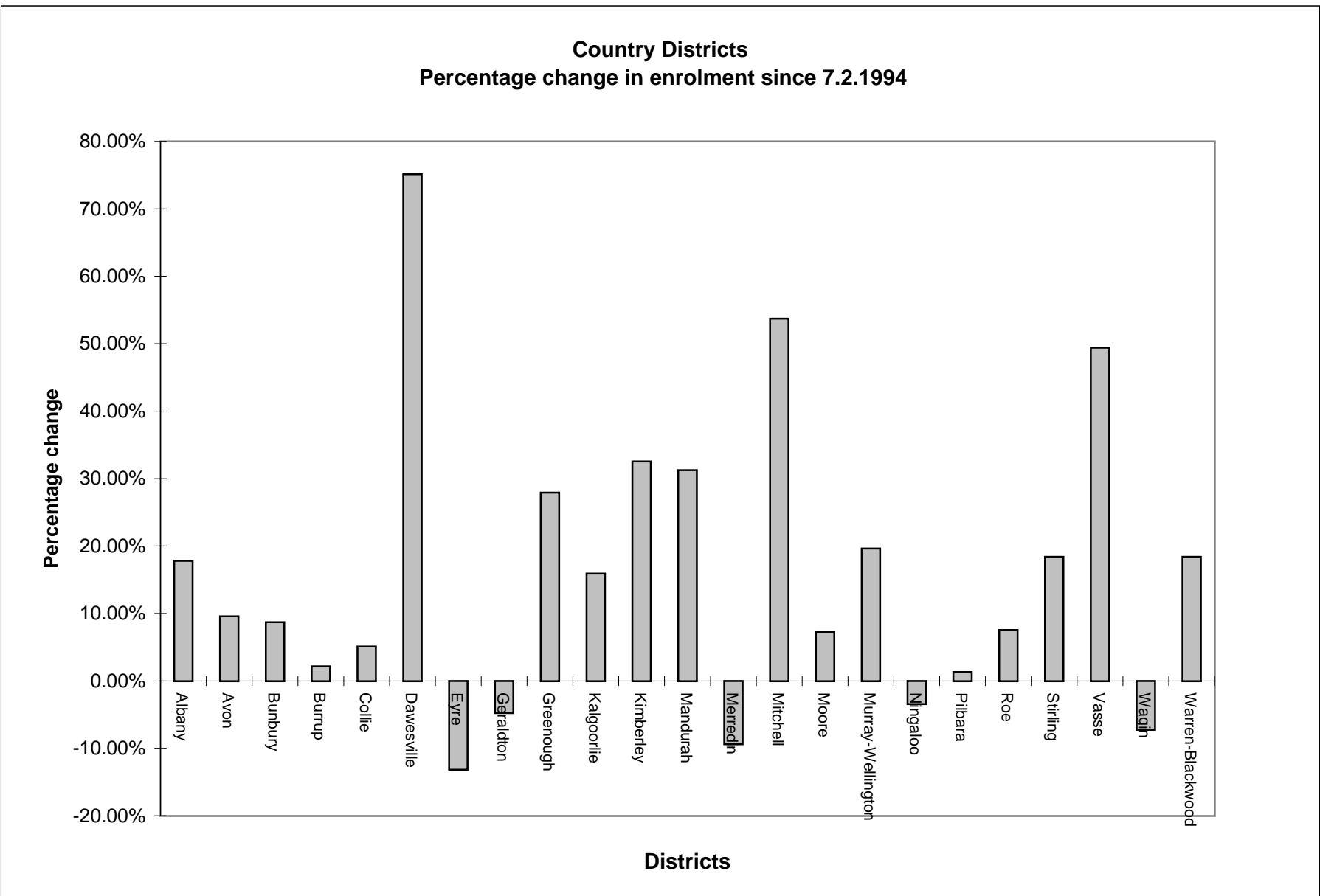


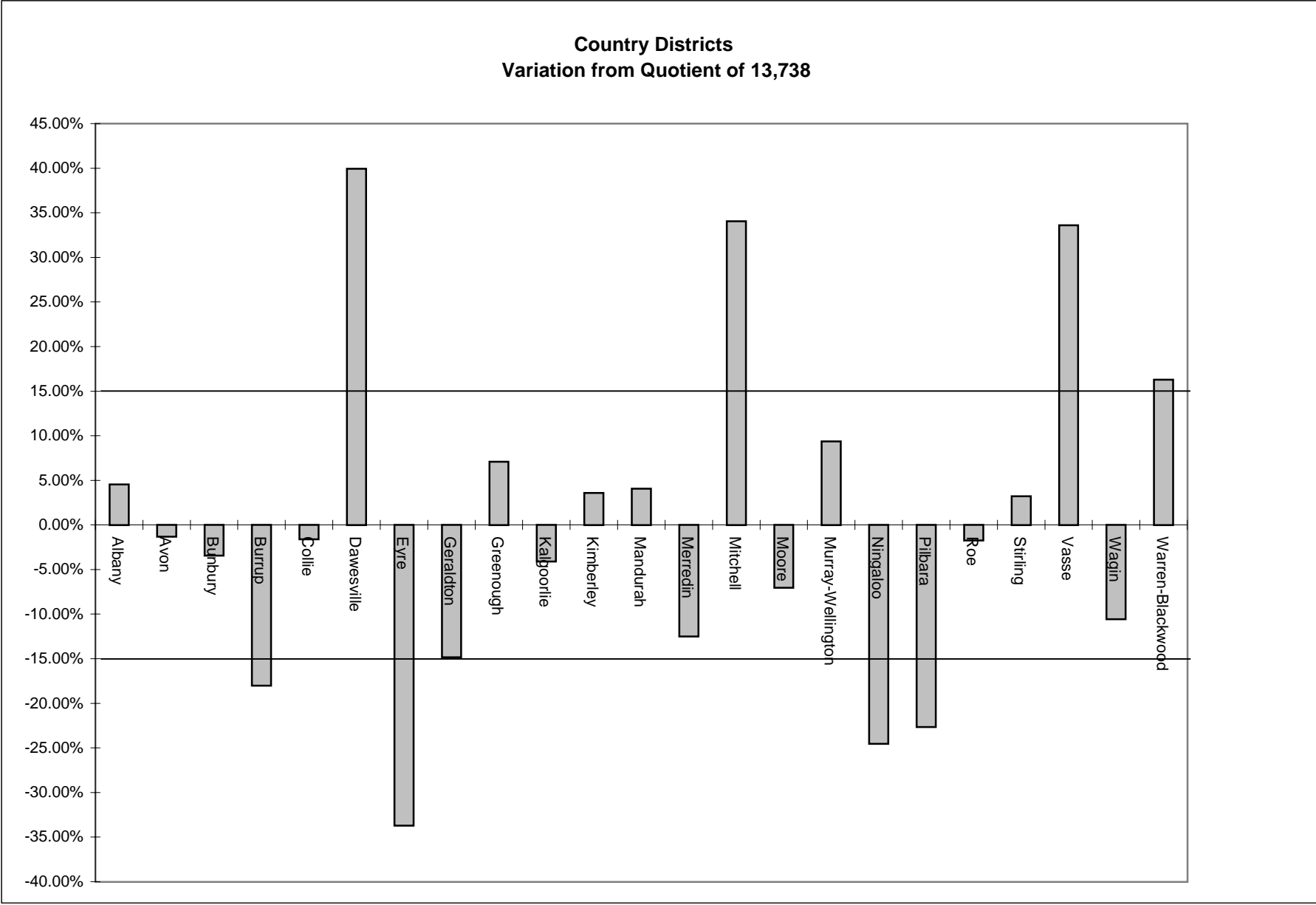
Legislative Assembly

COUNTRY AREA ENROLMENT STATISTICS

District	Enrolment 7.2.1994	Variation from Quotient	Enrolment 10.2.2001	Variation from Quotient	Enrolment 30.6.2003	Variation from Quotient	% change in enrolment 7.2.1994 to 30.6.2003
Albany	12,191	2.55%	14,352	6.56%	14,362	4.54%	17.81%
Avon	12,375	4.10%	13,469	0.00%	13,562	-1.28%	9.59%
Bunbury	12,206	2.68%	13,655	1.38%	13,270	-3.41%	8.72%
Burrup	11,026	-7.25%	10,835	-19.56%	11,265	-18.00%	2.17%
Collie	12,863	8.21%	13,507	0.28%	13,520	-1.59%	5.11%
Dawesville	10,978	-7.65%	17,185	27.59%	19,225	39.94%	75.12%
Eyre	10,490	-11.76%	9,443	-29.89%	9,110	-33.69%	-13.16%
Geraldton	12,285	3.34%	11,843	-12.07%	11,703	-14.81%	-4.74%
Greenough	11,502	-3.24%	14,392	6.85%	14,713	7.10%	27.92%
Kalgoorlie	11,368	-4.37%	13,006	-3.44%	13,178	-4.08%	15.92%
Kimberley	10,735	-9.69%	13,463	-0.04%	14,229	3.57%	32.55%
Mandurah	10,892	-8.37%	14,141	4.99%	14,296	4.06%	31.25%
Merredin	13,266	11.60%	12,712	-5.62%	12,023	-12.48%	-9.37%
Mitchell	11,982	0.80%	17,389	29.10%	18,416	34.05%	53.70%
Moore	11,912	0.21%	12,570	-6.67%	12,775	-7.01%	7.24%
Murray-Wellington	12,563	5.68%	14,531	7.88%	15,026	9.38%	19.61%
Ningaloo	10,738	-9.67%	10,127	-24.81%	10,371	-24.51%	-3.42%
Pilbara	10,490	-11.76%	10,194	-24.32%	10,629	-22.63%	1.33%
Roe	12,553	5.60%	13,547	0.58%	13,501	-1.72%	7.55%
Stirling	11,976	0.75%	13,876	3.02%	14,181	3.23%	18.41%
Vasse	12,286	3.35%	16,966	25.96%	18,355	33.61%	49.40%
Wagin	13,244	11.41%	12,739	-5.42%	12,288	-10.55%	-7.22%
Warren-Blackwood	13,490	13.48%	15,845	17.64%	15,974	16.28%	18.41%
Total	273,411		309,787		315,972		15.57%
	Quotient	11,887	Quotient	13,469	Quotient	13,738	

Note: The date 7.2.1994 is significant because it is the date on which the quotients for the present electoral boundaries were determined for the last Division of the State.





Metropolitan Enrolment

Electors 7.2.1994	Quotient	Electors 10.2.2001	Quotient	Electors 30.6.2003	Quotient	% change in enrolment 7.2.1994 to 30.6.2003
760,595	22,370	883,721	25,992	893,961	26,293	17.53%
Quotient:		Quotient:		Quotient:		
(-15%)	19,015	(-15%)	22,093	(-15%)	22,349	
(+15%)	25,726	(+15%)	29,891	(+15%)	30,237	

The quotient for the Metropolitan Area is determined by dividing the total enrolment (number of electors) for that area by the number of districts (34) in that area. The quotient used at the 1994 redistribution for metropolitan districts was 22,370.

Country Enrolment

Electors 7.2.1994	Quotient	Electors 10.2.2001	Quotient	Electors 30.6.2003	Quotient	% change in enrolment 7.2.1994 to 30.6.2003
273,411	11,887	309,787	13,469	315,972	13,738	15.57%
Quotient:		Quotient:		Quotient:		
(-15%)	10,104	(-15%)	11,449	(-15%)	11,677	
(+15%)	13,671	(+15%)	15,489	(+15%)	15,799	

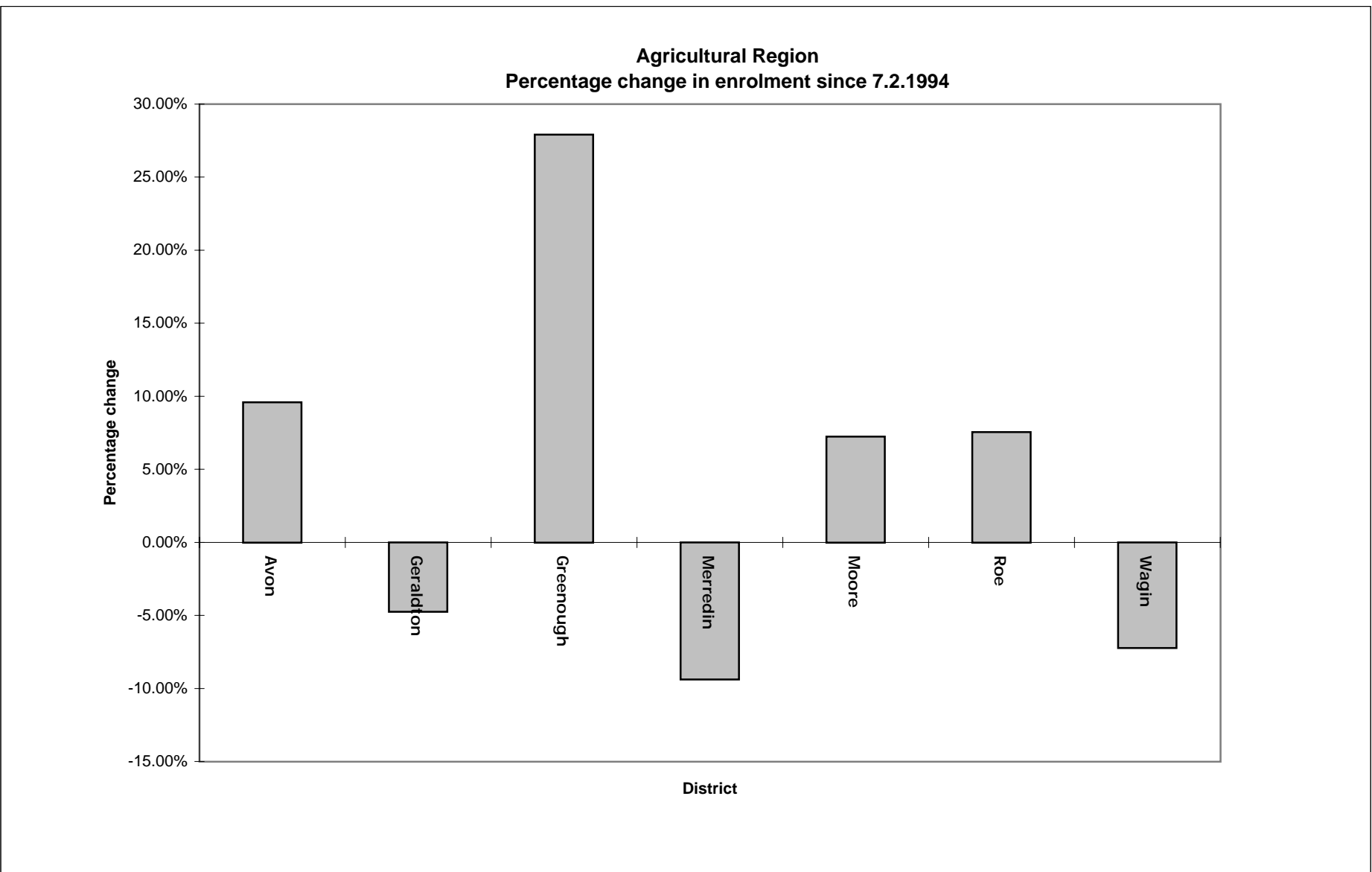
The quotient for the Country Area is determined by dividing the total enrolment (number of electors) for that area by the number of districts (23) in that area. The quotient used at the 1994 redistribution for country districts was 11,887.

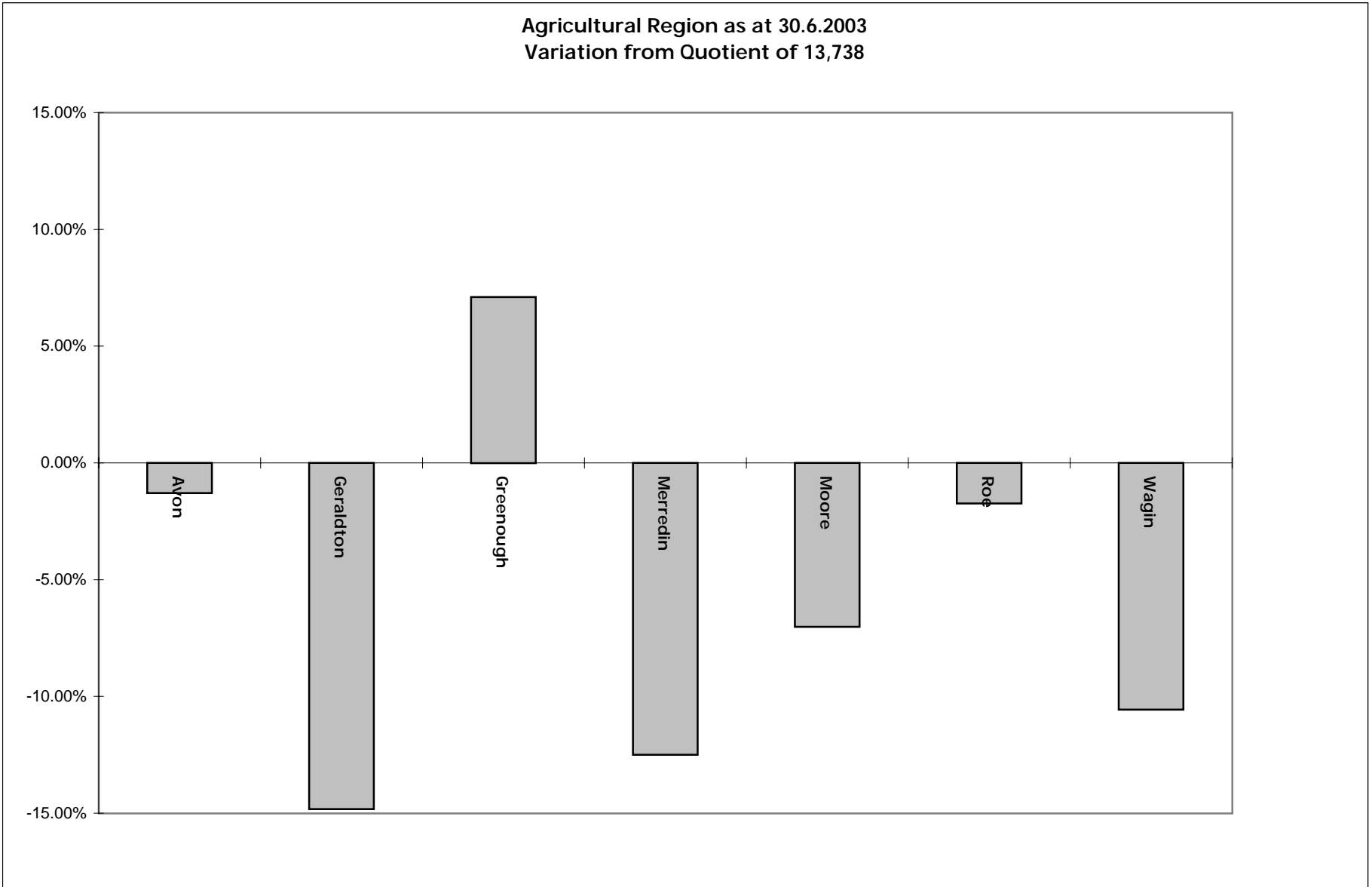
Legislative Council**REGIONAL ENROLMENTS**

Region	Enrolment 7.2.1994	Enrolment 10.2.2001	Enrolment 30.6.2003
East Metropolitan	227,048	269,030	273,279
North Metropolitan	312,210	362,307	366,392
South Metropolitan	221,337	252,384	254,290
Agricultural	87,137	91,272	90,565
Mining and Pastoral	64,847	67,068	68,782
South West	121,427	151,447	156,625
Total	1,034,006	1,193,508	1,209,933

Agricultural Region

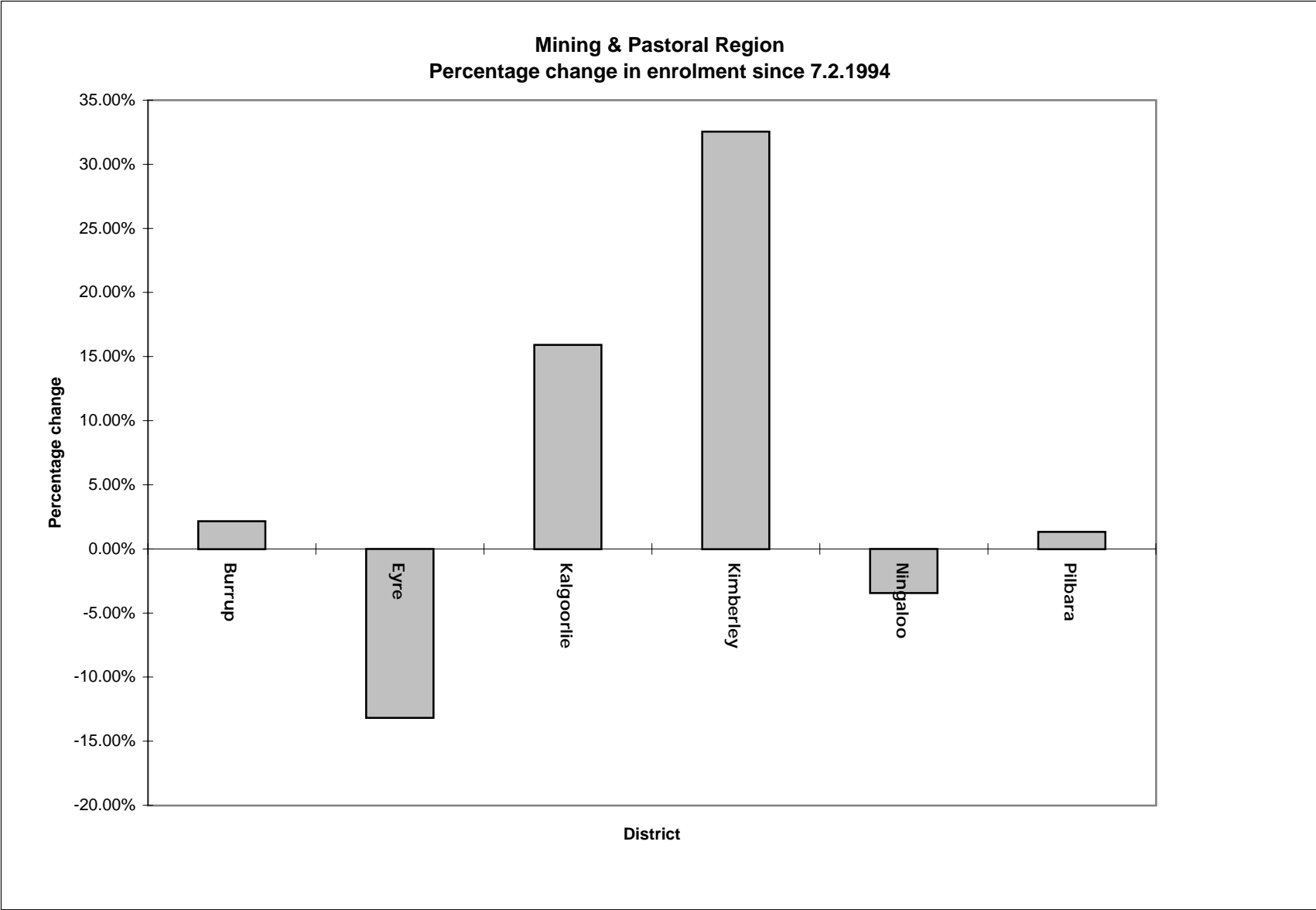
District	Enrolment 7.2.1994	Variation from Country Quotient of 7.2.1994	Enrolment 10.2.2001	Variation from Country Quotient of 10.2.2001	Enrolment 30.6.2003	Variation from Country Quotient of 30.6.2003	% change in enrolment 7.2.1994 to 30.6.2003
Avon	12,375	4.10%	13,469	0.00%	13,562	-1.28%	9.59%
Geraldton	12,285	3.34%	11,843	-12.07%	11,703	-14.81%	-4.74%
Greenough	11,502	-3.24%	14,392	6.85%	14,713	7.10%	27.92%
Merredin	13,266	11.60%	12,712	-5.62%	12,023	-12.48%	-9.37%
Moore	11,912	0.21%	12,570	-6.67%	12,775	-7.01%	7.24%
Roe	12,553	5.60%	13,547	0.58%	13,501	-1.72%	7.55%
Wagin	13,244	11.41%	12,739	-5.42%	12,288	-10.55%	-7.22%
Total	87,137		91,272		90,565		3.93%
	Quotient	11,887	Quotient	13,469	Quotient	13,738	

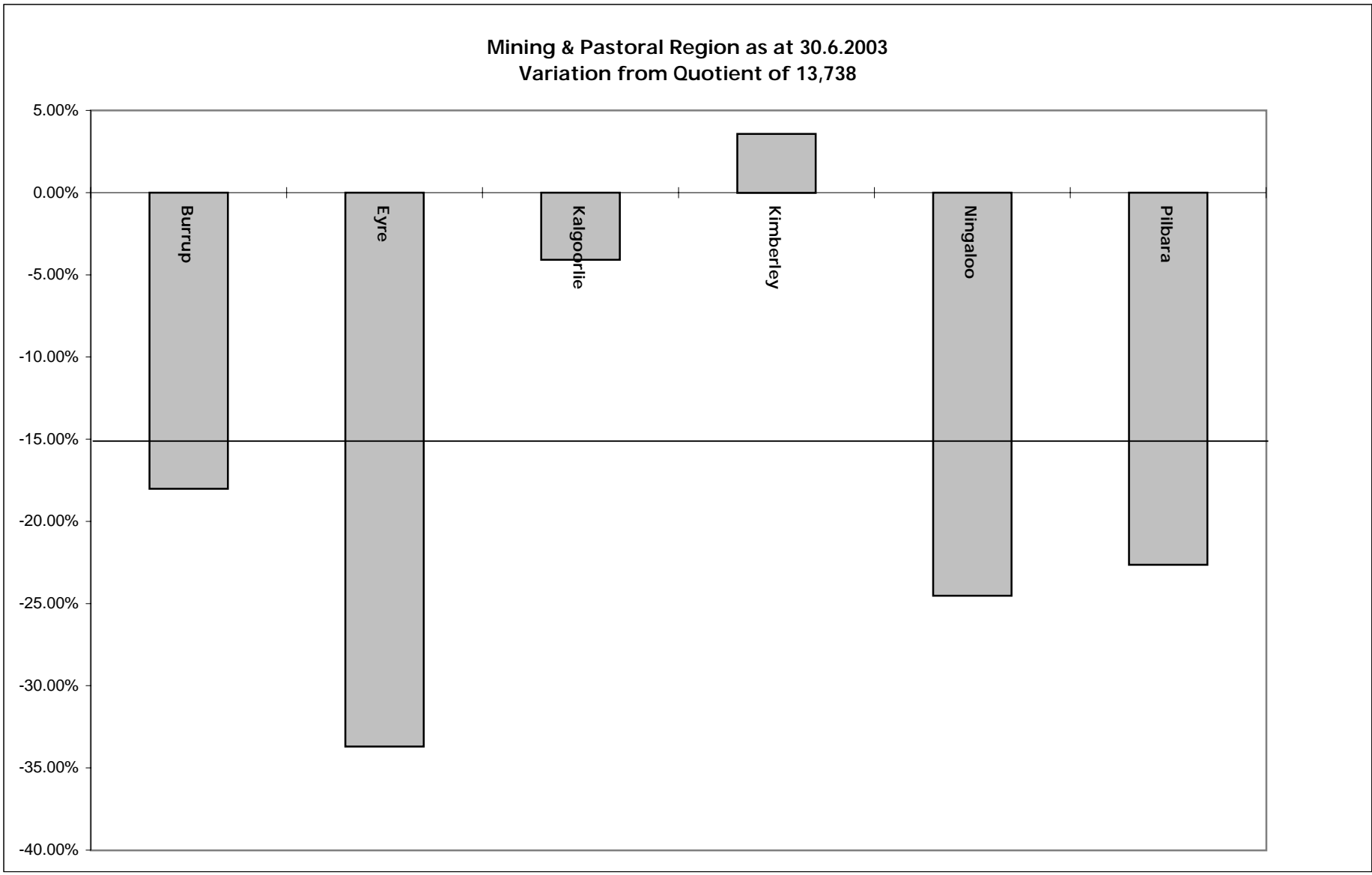




Mining and Pastoral Region

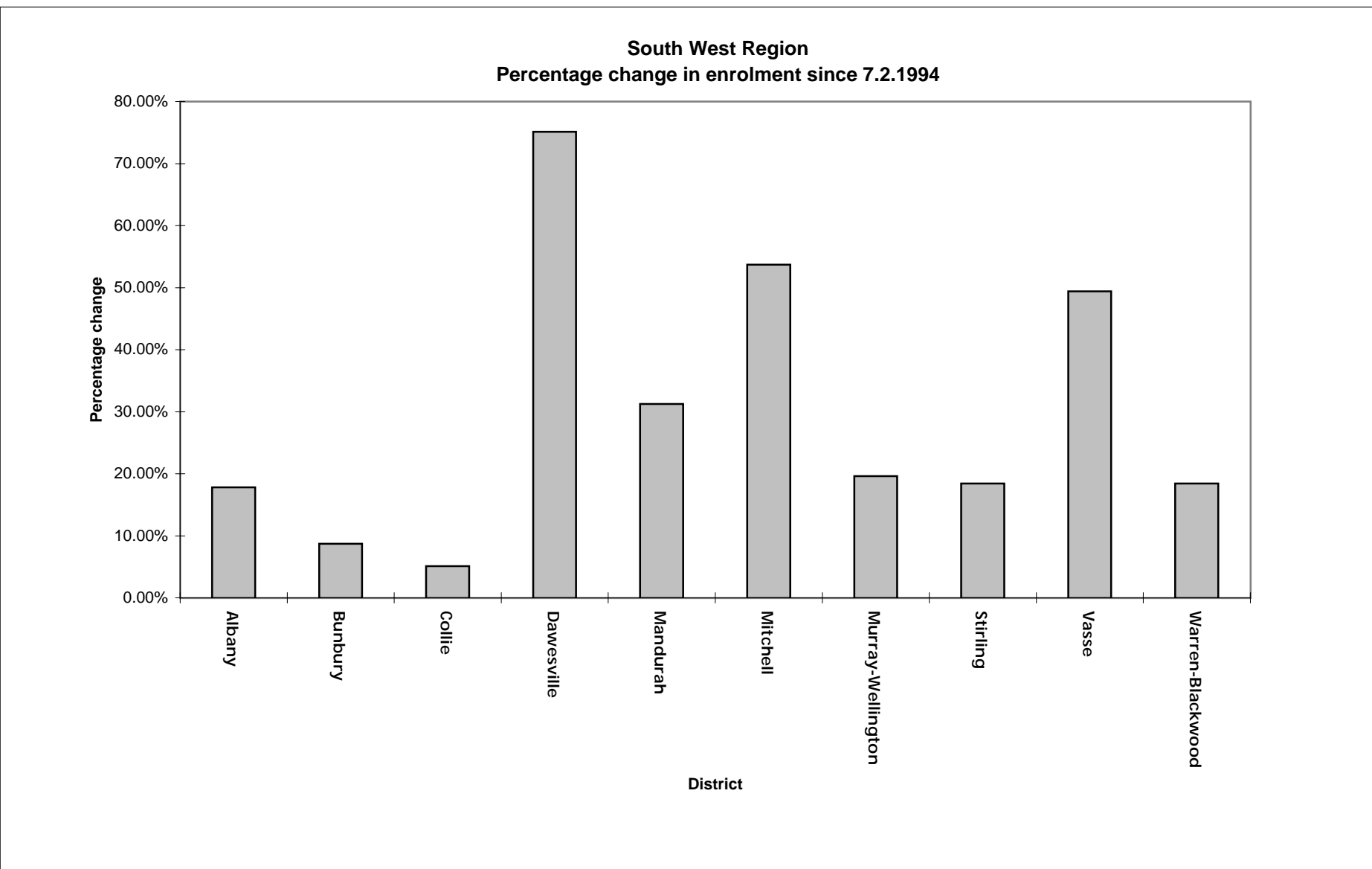
District	Enrolment 7.2.1994	Variation from Country Quotient of 7.2.1994	Enrolment 10.2.2001	Variation from Country Quotient of 10.2.2001	Enrolment 30.6.2003	Variation from Country Quotient of 30.6.2003	% change in enrolment 7.2.1994 to 30.6.2003
Burrup	11,026	-7.25%	10,835	-19.56%	11,265	-18.00%	2.17%
Eyre	10,490	-11.76%	9,443	-29.89%	9,110	-33.69%	-13.16%
Kalgoorlie	11,368	-4.37%	13,006	-3.44%	13,178	-4.08%	15.92%
Kimberley	10,735	-9.69%	13,463	-0.04%	14,229	3.57%	32.55%
Ningaloo	10,738	-9.67%	10,127	-24.81%	10,371	-24.51%	-3.42%
Pilbara	10,490	-11.76%	10,194	-24.32%	10,629	-22.63%	1.33%
Total	64,847		67,068		68,782		6.07%
	Quotient	11,887	Quotient	13,469	Quotient	13,738	

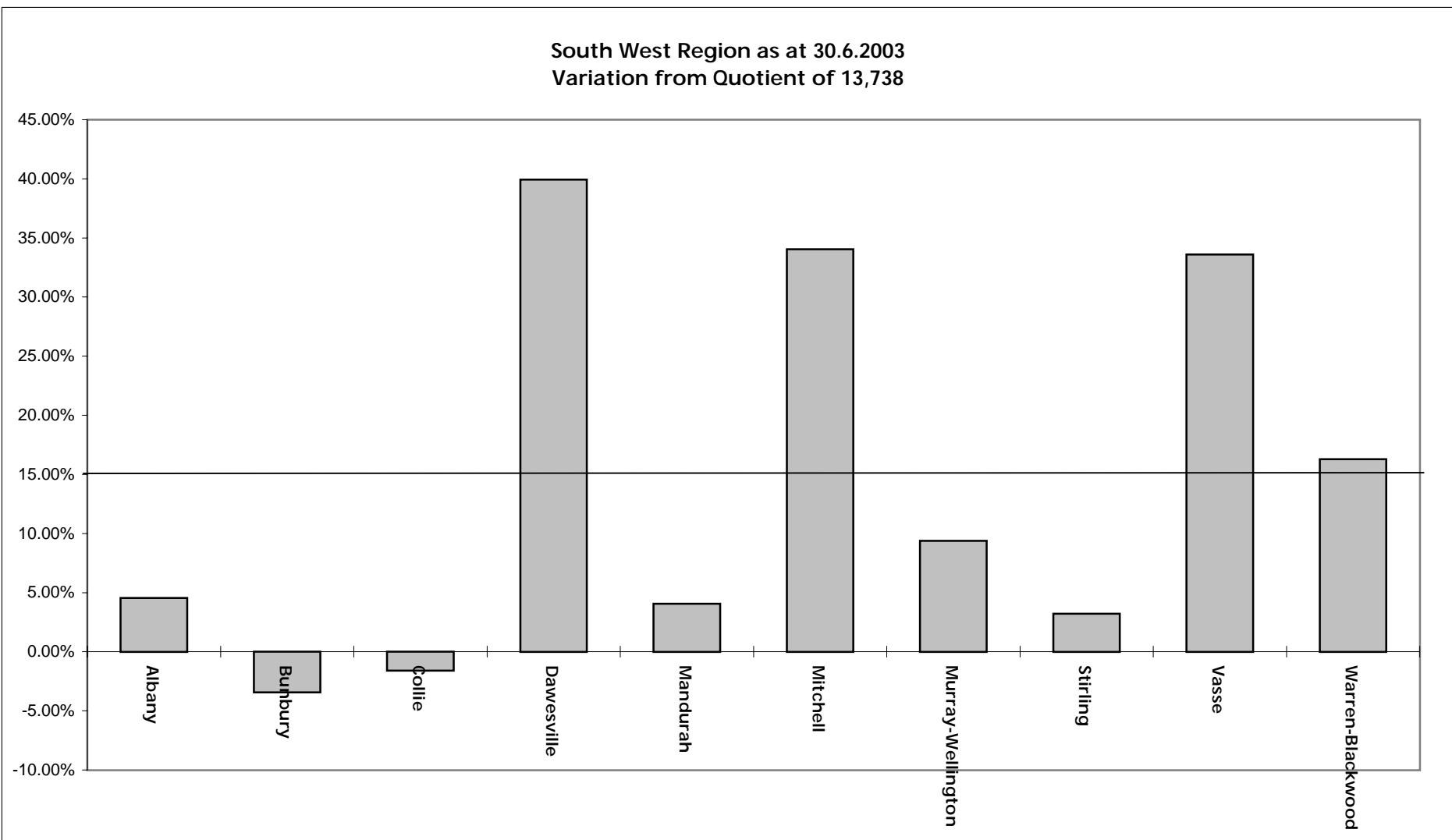




South West Region

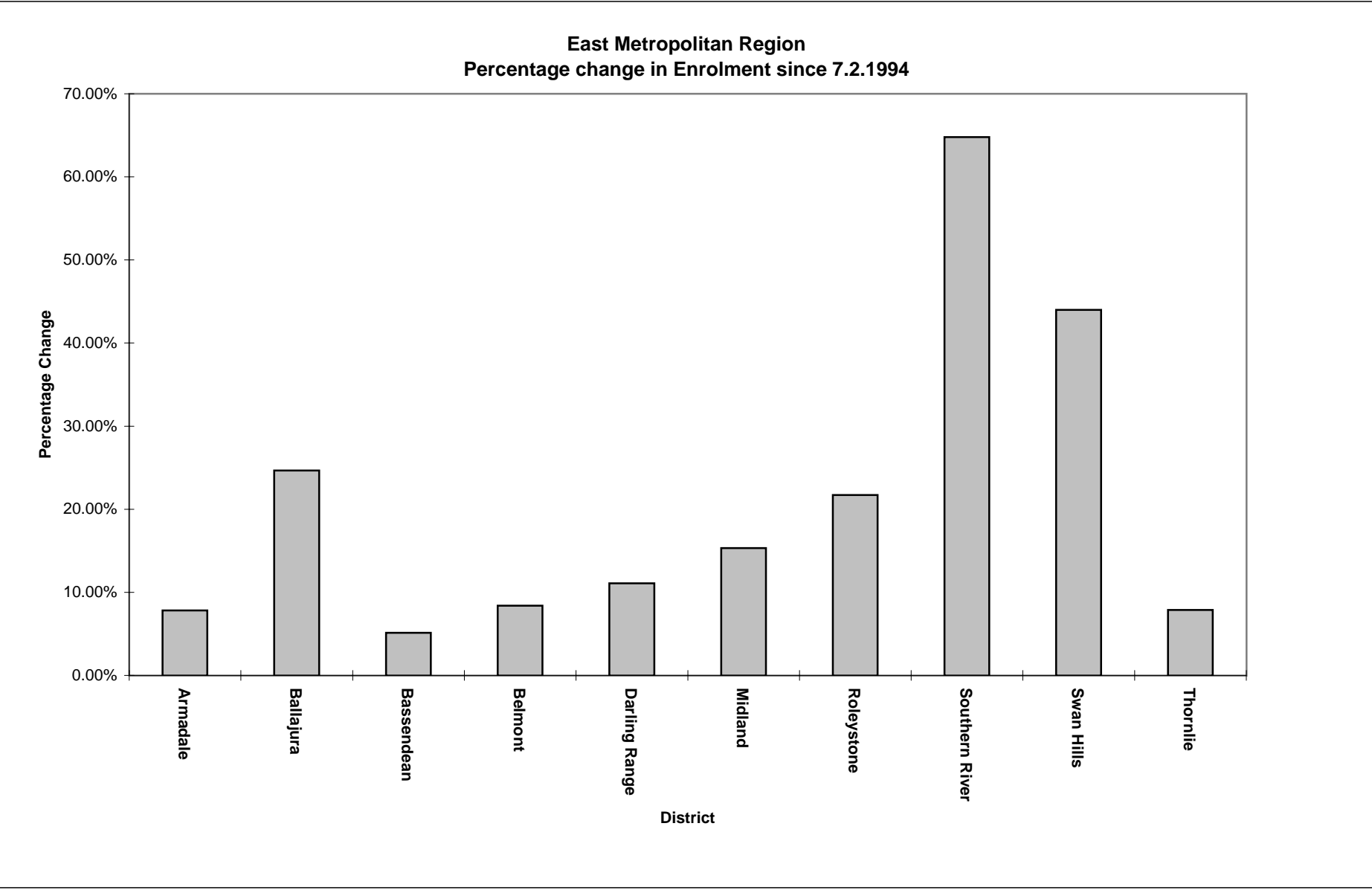
District	Enrolment 7.2.1994	Variation from Country Quotient of 7.2.1994	Enrolment 10.2.2001	Variation from Country Quotient of 10.2.2001	Enrolment 30.6.2003	Variation from Country Quotient of 30.6.2003	% change in enrolment 7.2.1994 to 30.6.2003
Albany	12,191	2.55%	14,352	6.56%	14,362	4.54%	17.81%
Bunbury	12,206	2.68%	13,655	1.38%	13,270	-3.41%	8.72%
Collie	12,863	8.21%	13,507	0.28%	13,520	-1.59%	5.11%
Dawesville	10,978	-7.65%	17,185	27.59%	19,225	39.94%	75.12%
Mandurah	10,892	-8.37%	14,141	4.99%	14,296	4.06%	31.25%
Mitchell	11,982	0.80%	17,389	29.10%	18,416	34.05%	53.70%
Murray-Wellington	12,563	5.68%	14,531	7.88%	15,026	9.38%	19.61%
Stirling	11,976	0.75%	13,876	3.02%	14,181	3.23%	18.41%
Vasse	12,286	3.35%	16,966	25.96%	18,355	33.61%	49.40%
Warren-Blackwood	13,490	13.48%	15,845	17.64%	15,974	16.28%	18.41%
Total	121,427		151,447		156,625		28.99%
	Quotient	11,887	Quotient	13,469	Quotient	13,738	

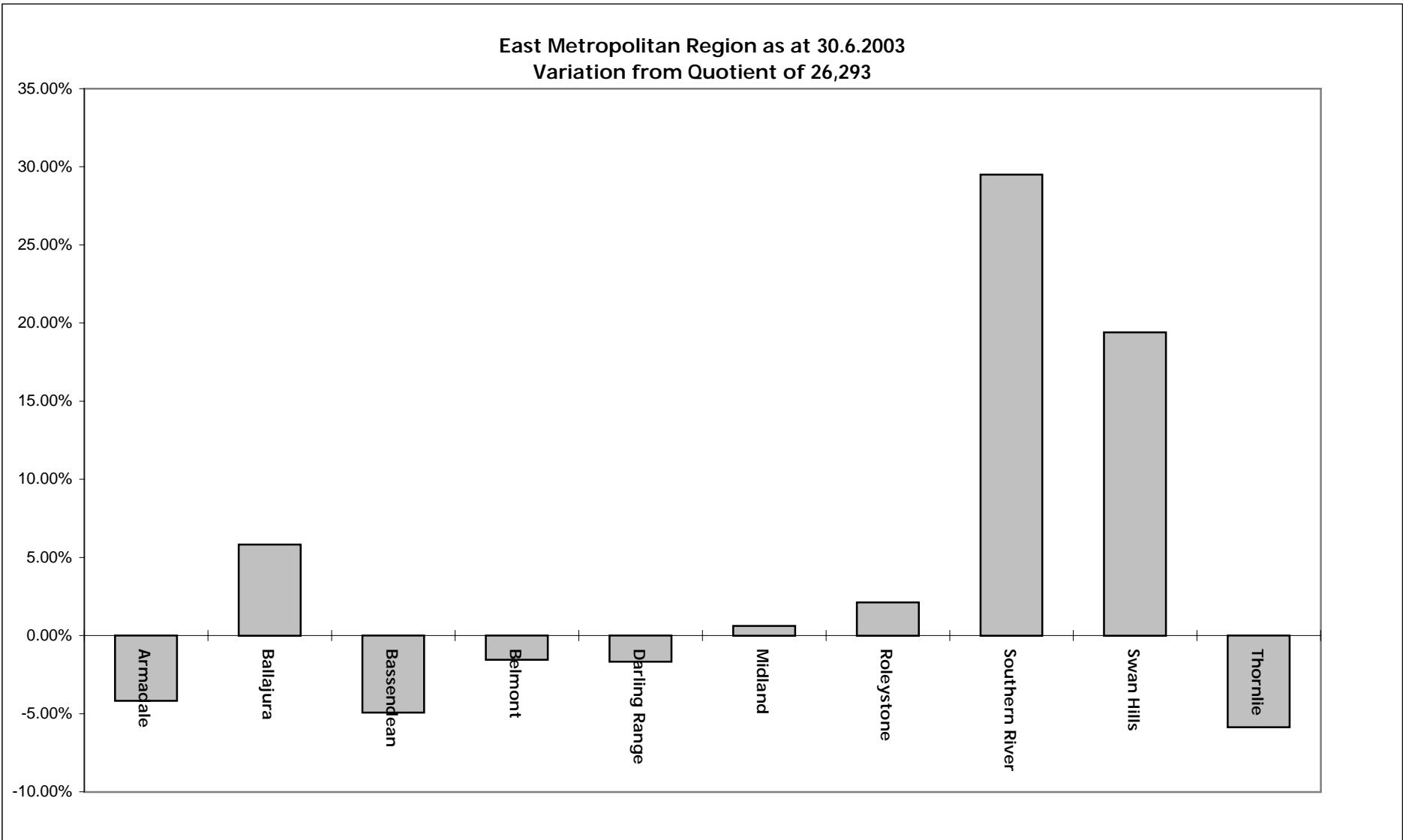




East Metropolitan Region

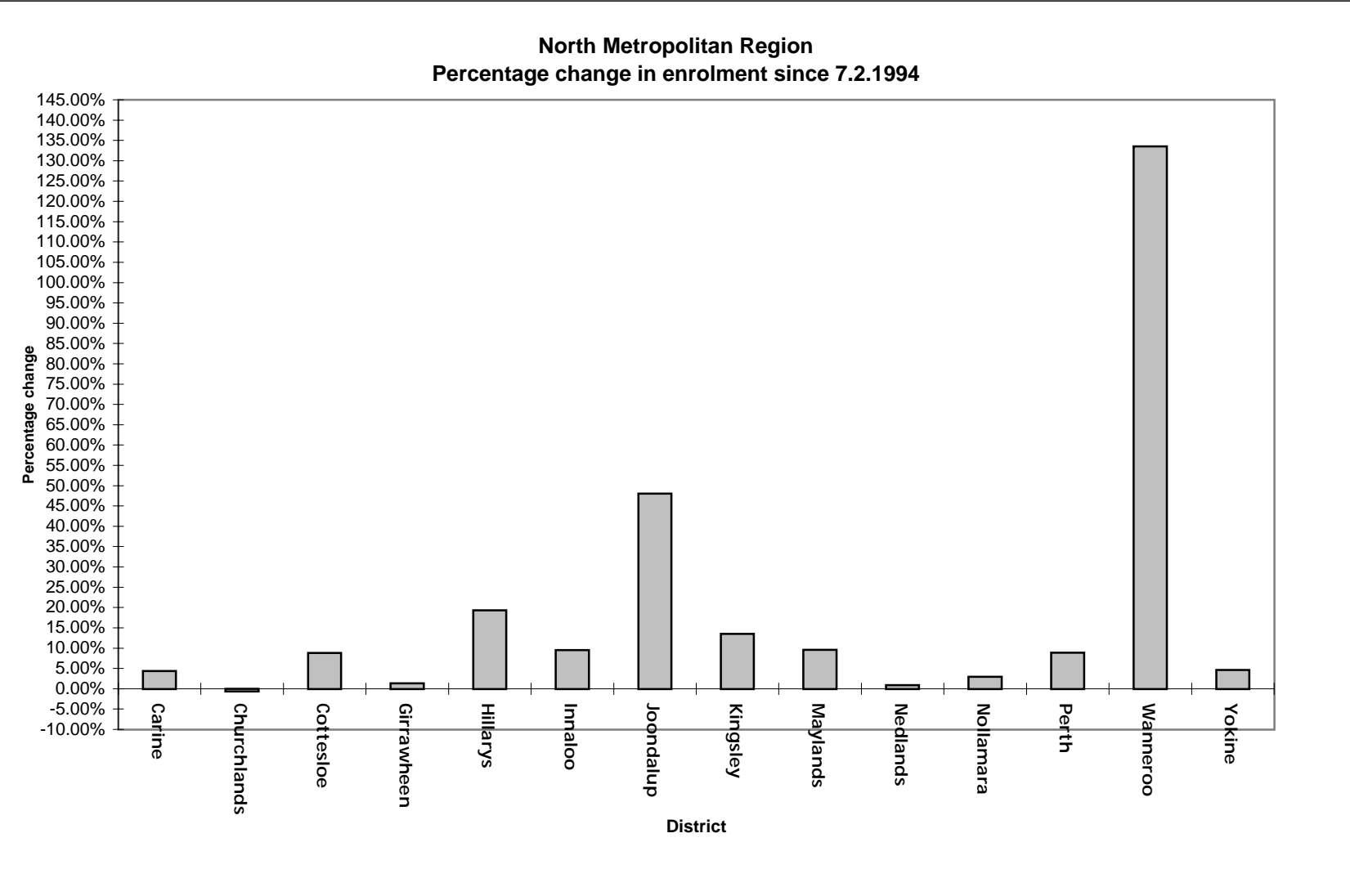
District	Enrolment 7.2.1994	Variation from Metropolitan Quotient of 7.2.1994	Enrolment 10.2.2001	Variation from Metropolitan Quotient of 10.2.2001	Enrolment 30.6.2003	Variation from Metropolitan Quotient of 30.6.2003	% change in enrolment 7.2.1994 to 30.6.2003
Armadale	23,369	4.46%	25,712	-1.08%	25,198	-4.16%	7.83%
Ballajura	22,322	-0.22%	27,974	7.63%	27,826	5.83%	24.66%
Bassendean	23,784	6.32%	25,209	-3.01%	25,002	-4.91%	5.12%
Belmont	23,885	6.77%	25,740	-0.97%	25,891	-1.53%	8.40%
Darling Range	23,275	4.04%	26,003	0.04%	25,857	-1.66%	11.09%
Midland	22,937	2.53%	26,647	2.52%	26,454	0.61%	15.33%
Roleystone	22,061	-1.38%	26,302	1.19%	26,850	2.12%	21.71%
Southern River	20,663	-7.63%	31,638	21.72%	34,051	29.51%	64.79%
Swan Hills	21,804	-2.53%	29,000	11.57%	31,394	19.40%	43.98%
Thornlie	22,948	2.58%	24,805	-4.57%	24,756	-5.85%	7.88%
Total	227,048		269,030		273,279		20.36%
	Quotient	22,370	Quotient	25,992	Quotient	26,293	

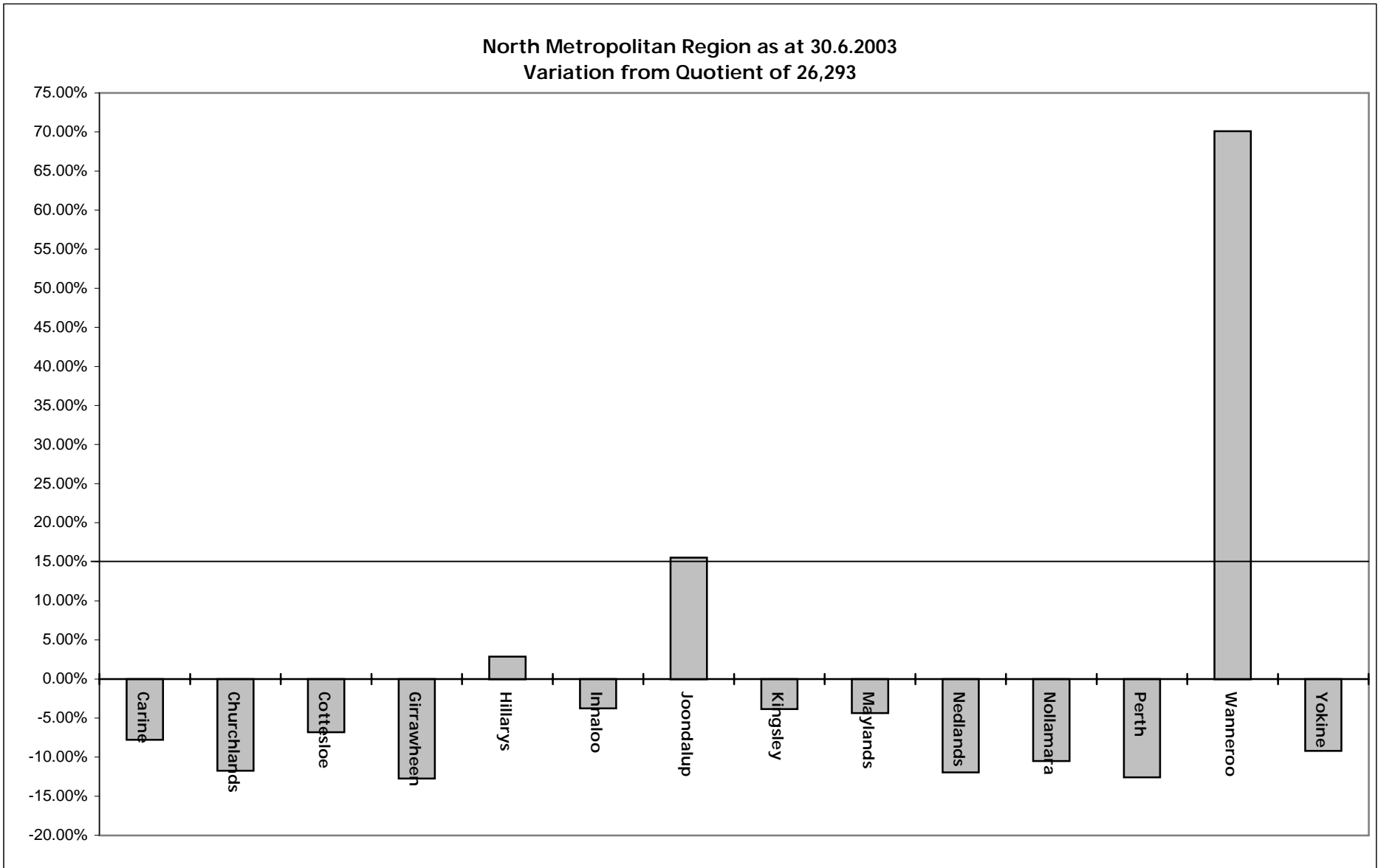




North Metropolitan Region

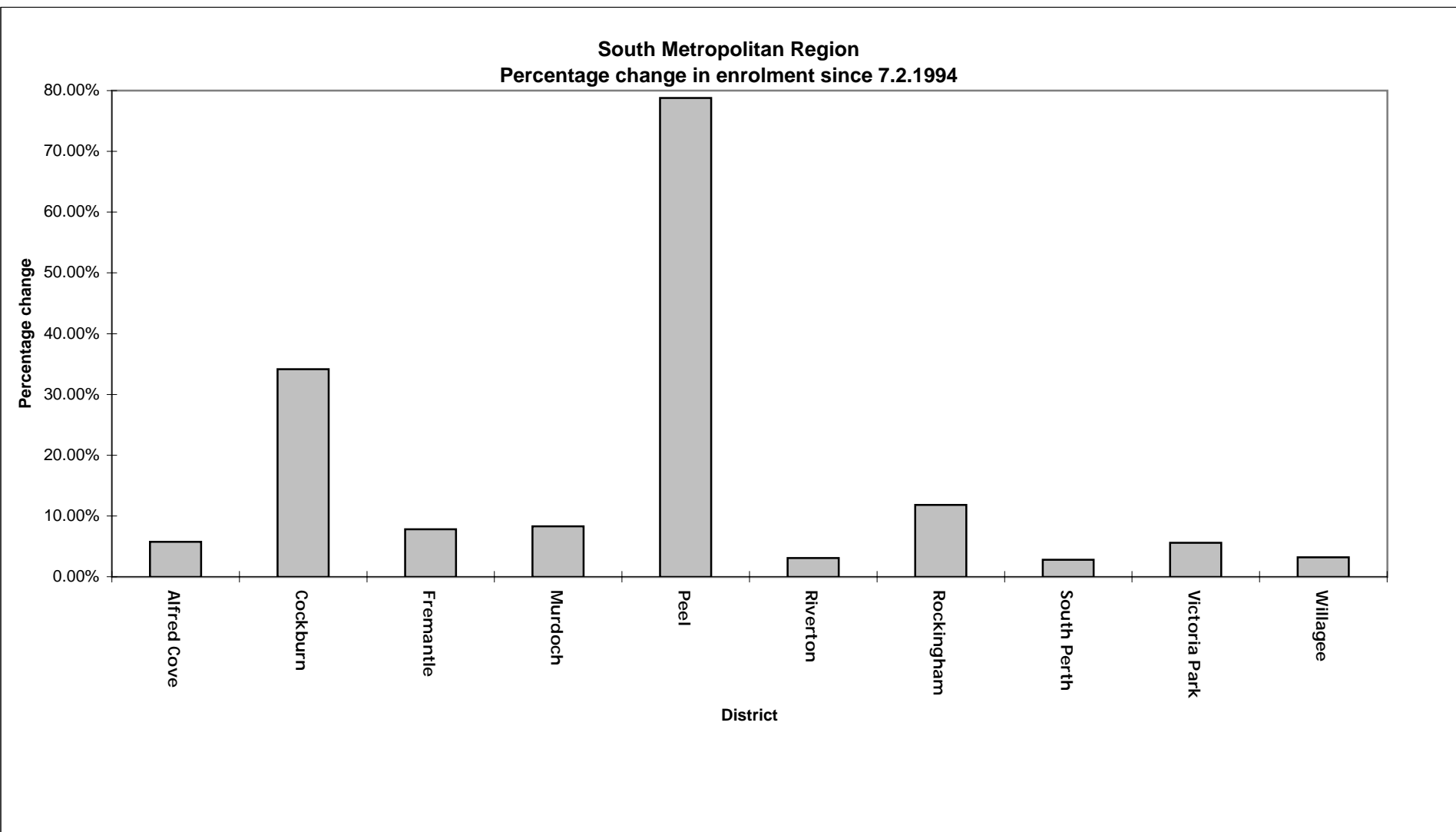
District	Enrolment 7.2.1994	Variation from Metropolitan Quotient of 7.2.1994	Enrolment 10.2.2001	Variation from Metropolitan Quotient of 10.2.2001	Enrolment 30.6.2003	Variation from Metropolitan Quotient of 30.6.2003	% change in enrolment 7.2.1994 to 30.6.2003
Carine	23,238	3.88%	24,928	-4.09%	24,257	-7.74%	4.39%
Churchlands	23,356	4.41%	23,877	-8.14%	23,210	-11.73%	-0.63%
Cottesloe	22,527	0.70%	24,767	-4.71%	24,510	-6.78%	8.80%
Girrawheen	22,652	1.26%	23,320	-10.28%	22,953	-12.70%	1.33%
Hillarys	22,674	1.36%	27,478	5.72%	27,047	2.87%	19.29%
Innaloo	23,106	3.29%	25,267	-2.79%	25,310	-3.74%	9.54%
Joondalup	20,513	-8.30%	29,490	13.46%	30,374	15.52%	48.07%
Kingsley	22,268	-0.46%	25,784	-0.80%	25,284	-3.84%	13.54%
Maylands	22,951	2.60%	24,797	-4.60%	25,155	-4.33%	9.60%
Nedlands	22,954	2.61%	23,729	-8.71%	23,155	-11.93%	0.88%
Nollamara	22,867	2.22%	24,001	-7.66%	23,539	-10.47%	2.94%
Perth	21,120	-5.59%	22,534	-13.30%	22,992	-12.55%	8.86%
Wanneroo	19,153	-14.38%	37,900	45.82%	44,725	70.10%	133.51%
Yokine	22,831	2.06%	24,435	-5.99%	23,881	-9.17%	4.60%
Total	312,210		362,307		366,392		17.35%
	Quotient	22,370	Quotient	25,992	Quotient	26,293	

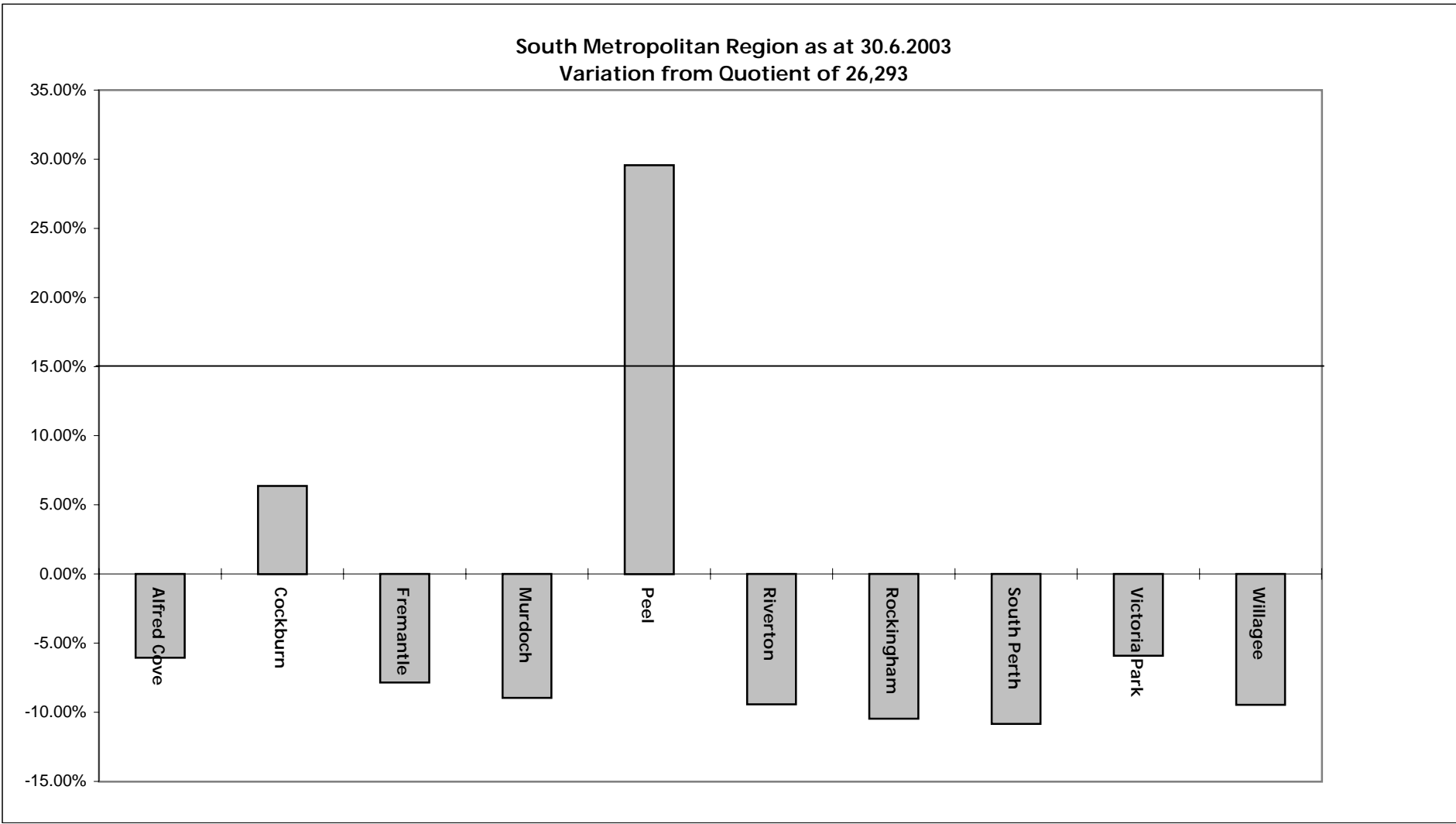




South Metropolitan Region

District	Enrolment 7.2.1994	Variation from Metropolitan Quotient of 7.2.1994	Enrolment 10.2.2001	Variation from Metropolitan Quotient of 10.2.2001	Enrolment 30.6.2003	Variation from Metropolitan Quotient of 30.6.2003	% change in enrolment 7.2.1994 to 30.6.2003
Alfred Cove	23,362	4.43%	24,717	-4.90%	24,707	-6.03%	5.76%
Cockburn	20,847	-6.81%	26,729	2.84%	27,968	6.37%	34.16%
Fremantle	22,481	0.49%	24,410	-6.09%	24,236	-7.82%	7.81%
Murdoch	22,106	-1.18%	24,149	-7.09%	23,944	-8.93%	8.31%
Peel	19,056	-14.82%	31,460	21.04%	34,067	29.57%	78.77%
Riverton	23,106	3.29%	24,247	-6.71%	23,818	-9.41%	3.08%
Rockingham	21,062	-5.85%	23,875	-8.14%	23,548	-10.44%	11.80%
South Perth	22,811	1.97%	23,964	-7.80%	23,448	-10.82%	2.79%
Victoria Park	23,435	4.76%	24,859	-4.36%	24,744	-5.89%	5.59%
Willagee	23,071	3.13%	23,974	-7.76%	23,810	-9.44%	3.20%
Total	221,337		252,384		254,290		14.89%
	Quotient	22,370	Quotient	25,992	Quotient	26,293	





Range of Enrolments

Area	7.2.1994		10.2.2001		30.6.2003	
	Highest	Lowest	Highest	Lowest	Highest	Lowest
Metropolitan	Belmont 23,885	Peel 19,056	Wanneroo 37,900	Perth 22,534	Wanneroo 44,725	Perth 22,942
Country	Warren-Blackwood 13,490	Pilbara & Eyre 10,490	Mitchell 17,389	Eyre 9,443	Dawesville 19,225	Eyre 9,110