



WESTERN AUSTRALIAN **Electoral Commission**

## **ELECTORAL ENROLMENT STATISTICS**

**30 September 2009**

This report details State electoral enrolment figures as at 30 September 2009 and shows that on that date the total State enrolment was 1,348,393.

This report includes figures that illustrate the percentage change in total enrolment for each electoral district since 26 February 2007. Enrolment figures taken at that date were used to calculate the quotas on which the last redistribution of State boundaries was based.

A handwritten signature in black ink that reads "Warwick Gately".

Warwick Gately AM  
**ELECTORAL COMMISSIONER**

**Contact Details:**

Western Australian Electoral Commission  
Level 2, 111 St Georges Terrace  
PERTH WA 6000

Postal Address:  
GPO Box F316  
PERTH WA 6841

Phone: (08) 9214 0400 or 13 63 06 (WA callers only)  
Facsimile: (08) 9226 0577  
Internet: [www.waec.wa.gov.au](http://www.waec.wa.gov.au)  
Email: [waec@waec.wa.gov.au](mailto:waec@waec.wa.gov.au)

<b>Contents</b>	<b>Page No.</b>
State Enrolment	3
Monthly Metropolitan and Country Enrolments and Quotients from January 2005 to March 2008 and average district enrolments from June 2008 to September 2009	4
Metropolitan Area Enrolment Statistics	5
Country Area Enrolment Statistics	8
Metropolitan and Country Enrolments and average district enrolments as at 26.2.2007, 15.8.2008 and 30.9.2009	11
Legislative Council Regional Enrolments as at 26.2.2007, 15.8.2008 and 30.9.2009	11
Regional Enrolments and average district enrolments by districts as at 26.2.2007, 15.8.2008 and 30.9.2009	12
Range of Enrolments as at 26.2.2007, 15.8.2008 and 30.9.2009	30

## State Enrolment

26 February 2007	1,259,665	1,293.874 including LDA of 34,209	In the 2007 Electoral Distribution, large districts (100,000 km <sup>2</sup> or greater) will qualify for a Large District Allowance (LDA). This allowance is calculated by multiplying the square kilometres of the district by 1.5%. See page 8.	Relevant date under section 16G of the <i>Electoral Act 1907</i> for the determination of quotients for the 2007 division of the State.  Amendments to the legislation have determined that the quotients are replaced by the average district enrolment, which is calculated by dividing the total enrolment by the number of districts in the State. Due to these amendments the total number of districts has increased from 57 to 59 districts. New districts were determined under the 'one vote, one value' principle on 29 October 2007 and these will apply to the next State general election.
15 August 2008	1,330,399	1,364,608 including LDA of 34,209	Increase from 26 February 2007 to 15 August 2008 is 70,734 or 5.32%	Close of roll for 6 September 2008 State General election.
17 April 2009	1,341,554		Increase from 15 August 2008 to 17 April 2009 is 11,155 or .84%	Close of roll for 16 May 2009 Daylight Saving Referendum.
30 September 2009	1,348,393	1,382,602 including LDA of 34,209	Increase from 17 April 2009 to 30 September 2009 is 6839 or .51%	

## Monthly Enrolments and Quotients

Year	Month	Metropolitan Enrolment	Metropolitan Quotient	Country Enrolment	Country Quotient	Total Enrolment	
2005	January	937,528	27,574	327,124	14,223	1,264,652	
	February	939,731	27,639	327,627	14,245	1,267,358	
	March	942,529	27,721	329,272	14,316	1,271,801	
	April	944,708	27,786	329,510	14,327	1,274,218	
	May	944,309	27,774	329,082	14,308	1,273,391	
	June	939,938	27,645	326,879	14,212	1,266,817	
	July	936,438	27,542	325,241	14,141	1,261,679	
	August	929,807	27,347	323,283	14,056	1,253,090	
	September	933,403	27,453	324,180	14,095	1,257,583	
	October	931,308	27,391	323,838	14,080	1,255,146	
	November	933,901	27,468	324,465	14,107	1,258,366	
	December	933,898	27,468	324,143	14,093	1,258,041	
2006	January	934,804	27,494	324,324	14,101	1,259,128	
	February	935,653	27,519	324,339	14,102	1,259,992	
	March	933,950	27,469	323,738	14,076	1,257,688	
	April	935,431	27,513	323,718	14,075	1,259,149	
	May	934,148	27,475	323,571	14,068	1,257,719	
	June	937,315	27,568	324,530	14,110	1,261,845	
	July	937,309	27,568	324,529	14,110	1,261,838	
	August	930,316	27,362	322,890	14,039	1,253,206	
	September	929,274	27,332	322,822	14,036	1,252,096	
	October	932,303	27,421	323,876	14,082	1,256,179	
	November	932,312	27,421	323,702	14,074	1,256,014	
	December	933,372	27,452	324,157	14,094	1,257,529	
2007	January	934,914	27,497	324,444	14,106	1,259,358	
	February	940,679	27,667	325,673	14,160	1,266,352	
	March	944,170	27,770	326,586	14,199	1,270,756	
	April	952,601	28,018	327,683	14,247	1,280,284	
	May	960,368	28,246	329,375	14,321	1,289,743	
	June	965,919	28,409	330,939	14,389	1,296,858	
	July	970,493	28,544	332,331	14,449	1,302,824	
	August	975,006	28,677	334,461	14,542	1,309,467	
	September	969,658	28,519	333,761	14,511	1,303,419	
	December	984,194	28,947	338,181	14,704	1,322,375	
	2008	March	983,373	28,923	337,729	14,684	1,321,102

Note: Up to the end of the March 2008 quarterly enrolment statistics, the above quotient figures were determined by dividing the total enrolments (number of electors) for that area by the number of districts in that area (34 in the metropolitan area and 23 in the country area).

## Monthly Enrolments and average district enrolments

Year	Month	Metropolitan Enrolment	Country Enrolment	Average District Enrolment	Total Enrolment
2008	June	985,914	337,980	22,439	1,323,894
	August	991,040	339,359	22,549	1,330,399
	September	995,350	340,870	22,648	1,336,220
	December	987,774	336,799	22,450	1,324,573
2009	March	996,297	338,054	22,616	1,334,351
	June	1,010,206	342,689	22,930	1,352,895
	September	1,005,837	342,556	22,854	1,348,393

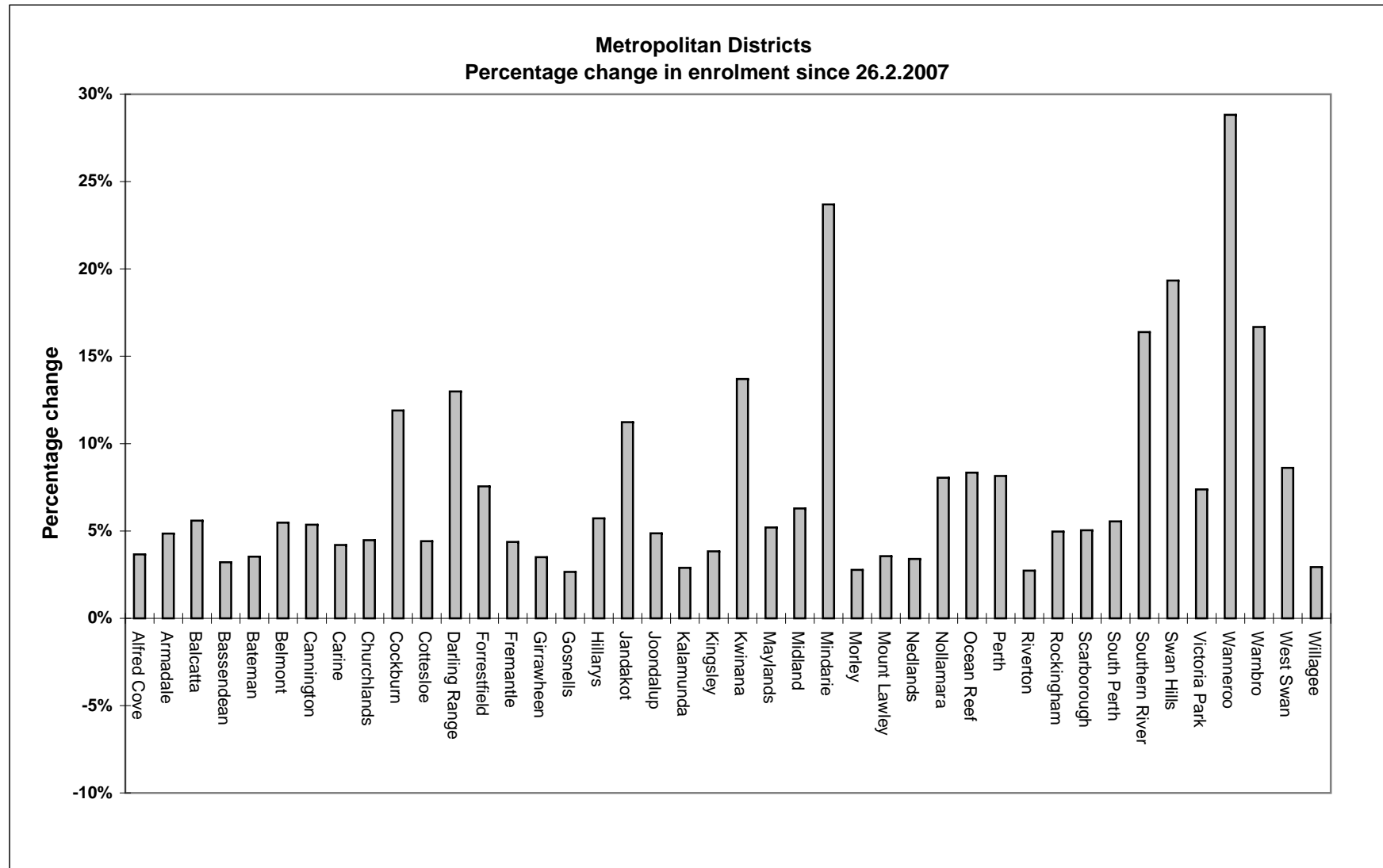
Note: Amendments to legislation have determined that the quotients are replaced by the average district enrolment which is calculated by dividing the total enrolment by the number of districts in the State. Due to these amendments to the legislation the total number of districts has increased from 57 to 59 districts. New districts were determined under the 'one vote, one value' principle on 29 October 2007.

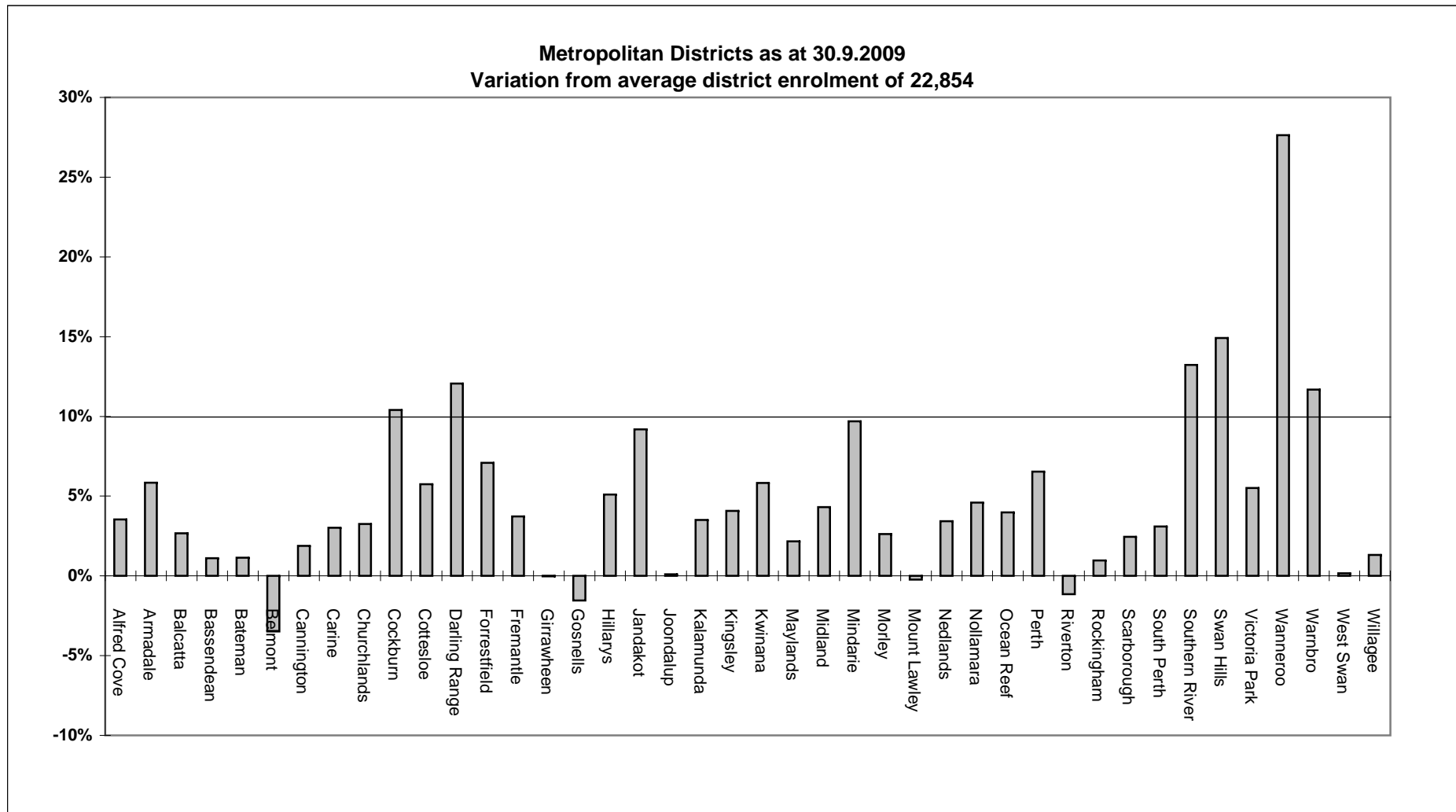
# Legislative Assembly

## Metropolitan Area Enrolment Statistics

District	Enrolment 26.2.2007	Variation from average district enrolment	Enrolment 15.8.2008	Variation from average district enrolment	Enrolment 30.9.2009	Variation from average district enrolment	% change in enrolment 26.2.2007 to 30.9.2009
Alfred Cove	22,827	6.92%	23,583	4.59%	23,662	3.53%	3.66%
Armadale	23,071	8.06%	24,116	6.95%	24,189	5.84%	4.85%
Balcatta	22,223	4.09%	23,365	3.62%	23,465	2.67%	5.59%
Bassendean	22,390	4.87%	23,098	2.43%	23,108	1.11%	3.21%
Bateman	22,327	4.58%	23,031	2.14%	23,115	1.14%	3.53%
Belmont	20,912	-2.05%	22,109	-1.95%	22,058	-3.48%	5.48%
Cannington	22,102	3.52%	23,198	2.88%	23,285	1.89%	5.35%
Carine	22,595	5.83%	23,392	3.74%	23,544	3.02%	4.20%
Churchlands	22,589	5.80%	23,397	3.76%	23,599	3.26%	4.47%
Cockburn	22,550	5.62%	24,439	8.38%	25,233	10.41%	11.90%
Cottesloe	23,143	8.40%	24,035	6.59%	24,166	5.74%	4.42%
Darling Range	22,668	6.17%	24,072	6.75%	25,611	12.06%	12.98%
Forrestfield	22,754	6.58%	24,248	7.53%	24,473	7.08%	7.55%
Fremantle	22,715	6.39%	23,658	4.92%	23,707	3.73%	4.37%
Girrawheen	22,076	3.40%	22,854	1.35%	22,849	-0.02%	3.50%
Gosnells	21,918	2.66%	22,511	-0.17%	22,500	-1.55%	2.66%
Hillarys	22,720	6.42%	23,676	5.00%	24,020	5.10%	5.72%
Jandakot	22,435	5.08%	24,177	7.22%	24,954	9.19%	11.23%
Joondalup	21,815	2.18%	22,945	1.76%	22,877	0.10%	4.87%
Kalamunda	22,992	7.69%	23,516	4.29%	23,657	3.51%	2.89%
Kingsley	22,905	7.28%	23,642	4.85%	23,784	4.07%	3.84%
Kwinana	21,271	-0.37%	23,491	4.18%	24,184	5.82%	13.69%
Maylands	22,195	3.96%	23,265	3.18%	23,349	2.17%	5.20%
Midland	22,432	5.07%	23,549	4.43%	23,841	4.32%	6.28%
Mindarie	20,267	-5.07%	23,613	4.72%	25,069	9.69%	23.69%
Morley	22,818	6.88%	23,480	4.13%	23,452	2.62%	2.78%
Mount Lawley	22,020	3.14%	22,868	1.41%	22,802	-0.23%	3.55%
Nedlands	22,860	7.07%	23,636	4.82%	23,637	3.43%	3.40%
Nollamara	22,124	3.63%	23,570	4.53%	23,903	4.59%	8.04%
Ocean Reef	21,936	2.74%	23,045	2.20%	23,764	3.98%	8.33%
Perth	22,514	5.45%	24,381	8.12%	24,347	6.53%	8.14%
Riverton	21,989	2.99%	22,737	0.83%	22,590	-1.16%	2.73%
Rockingham	21,983	2.96%	22,903	1.57%	23,075	0.97%	4.97%
Scarborough	22,292	4.41%	23,420	3.86%	23,414	2.45%	5.03%
South Perth	22,324	4.56%	23,522	4.32%	23,561	3.09%	5.54%
Southern River	22,234	4.14%	24,632	9.24%	25,878	13.23%	16.39%
Swan Hills	22,008	3.08%	24,779	9.89%	26,263	14.92%	19.33%
Victoria Park	22,457	5.19%	24,201	7.33%	24,115	5.52%	7.38%
Wanneroo	22,643	6.06%	26,745	18.61%	29,168	27.63%	28.82%
Warnbro	21,873	2.45%	24,358	8.02%	25,522	11.67%	16.68%
West Swan	21,076	-1.28%	22,369	-0.80%	22,891	0.16%	8.61%
Willagee	22,496	5.37%	23,414	3.84%	23,156	1.32%	2.93%
<b>Total</b>	935,539		991,040		1,005,837		7.51%
	Average District Enrolment	21,350	Average District Enrolment	22,549	Average District Enrolment	22,854	

Note: Amendments to legislation have determined that the quotients are replaced by the average district enrolment which is calculated by dividing the total enrolment by the number of districts in the State. Due to these amendments the total number of districts has increased from 57 to 59 districts. New districts were determined under the 'one vote, one value' principle on 29 October 2007.





## Legislative Assembly

### Country Area Enrolment Statistics

District	Enrolment 26.2.2007	Variation from average district enrolment	Enrolment 15.8.2008	Variation from average district enrolment	Enrolment 30.9.2009	Variation from average district enrolment	% change in enrolment 26.2.2007 to 30.9.2009
	Including LDA		Including LDA		Including LDA		
Albany	21,616	1.25%	22,506	-0.19%	22,911	0.25%	5.99%
Blackwood-Stirling	20,009	-6.28%	20,723	-8.10%	21,045	-7.92%	5.18%
Bunbury	20,185	-5.46%	20,917	-7.24%	20,984	-8.18%	3.96%
Central Wheatbelt	20,299	-4.92%	20,491	-9.13%	20,702	-9.42%	1.99%
Collie-Preston	22,195	3.96%	23,869	5.85%	24,738	8.24%	11.46%
Dawesville	20,041	-6.13%	21,661	-3.94%	22,333	-2.28%	11.44%
Eyre*	21,419	0.32%	22,181	-1.63%	21,866	-4.32%	2.09%
Geraldton	20,575	-3.63%	21,399	-5.10%	21,653	-5.26%	5.24%
Kalgoorlie*	23,148	8.42%	23,630	4.79%	23,587	3.21%	1.90%
Kimberley*	22,522	5.49%	22,944	1.75%	22,306	-2.40%	-0.96%
Mandurah	19,563	-8.37%	21,101	-6.42%	21,609	-5.45%	10.46%
Moore	21,453	0.48%	22,277	-1.21%	22,661	-0.85%	5.63%
Murray-Wellington	22,030	3.19%	23,775	5.44%	24,427	6.88%	10.88%
North West*	21,694	1.61%	22,098	-2.00%	21,608	-5.45%	-0.40%
Pilbara*	19,202	-10.06%	19,361	-14.14%	19,134	-16.28%	-0.35%
Vasse	22,232	4.13%	24,249	7.54%	24,886	8.89%	11.94%
Wagin	20,152	-5.61%	20,386	-9.59%	20,315	-11.11%	0.81%
<b>Total</b>	<b>358,335</b>		<b>373,568</b>		<b>376,765</b>		<b>5.14%</b>
	Average District Enrolment	21,350	Average District Enrolment	22,549	Average District Enrolment	22,854	

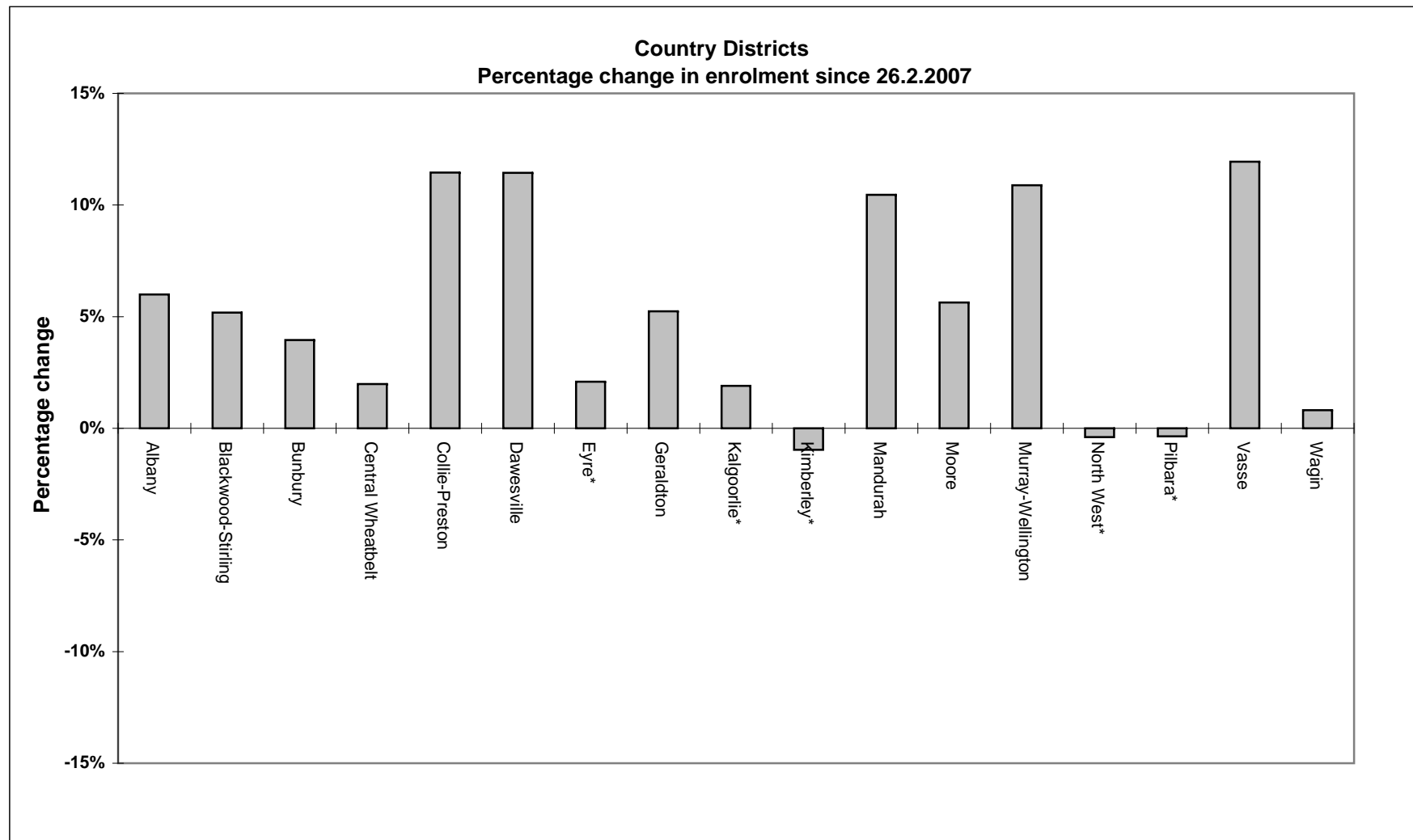
\* indicates Large District.

Large districts (100,000 km<sup>2</sup> or greater) qualify for a Large District Allowance (LDA). This allowance is calculated by multiplying the square kilometres of the district by 1.5%. The final number, calculated by adding the allowance to the number of electors in the district, must be within a range of 20% less or 10% greater than the average district enrolment.

Note: Amendments to legislation have determined that the quotients are replaced by the average district enrolment which is calculated by dividing the total enrolment by the number of districts in the State. Due to these amendments the total number of districts has increased from 57 to 59 districts. New districts were determined under the 'one vote, one value' principle on 29 October 2007.

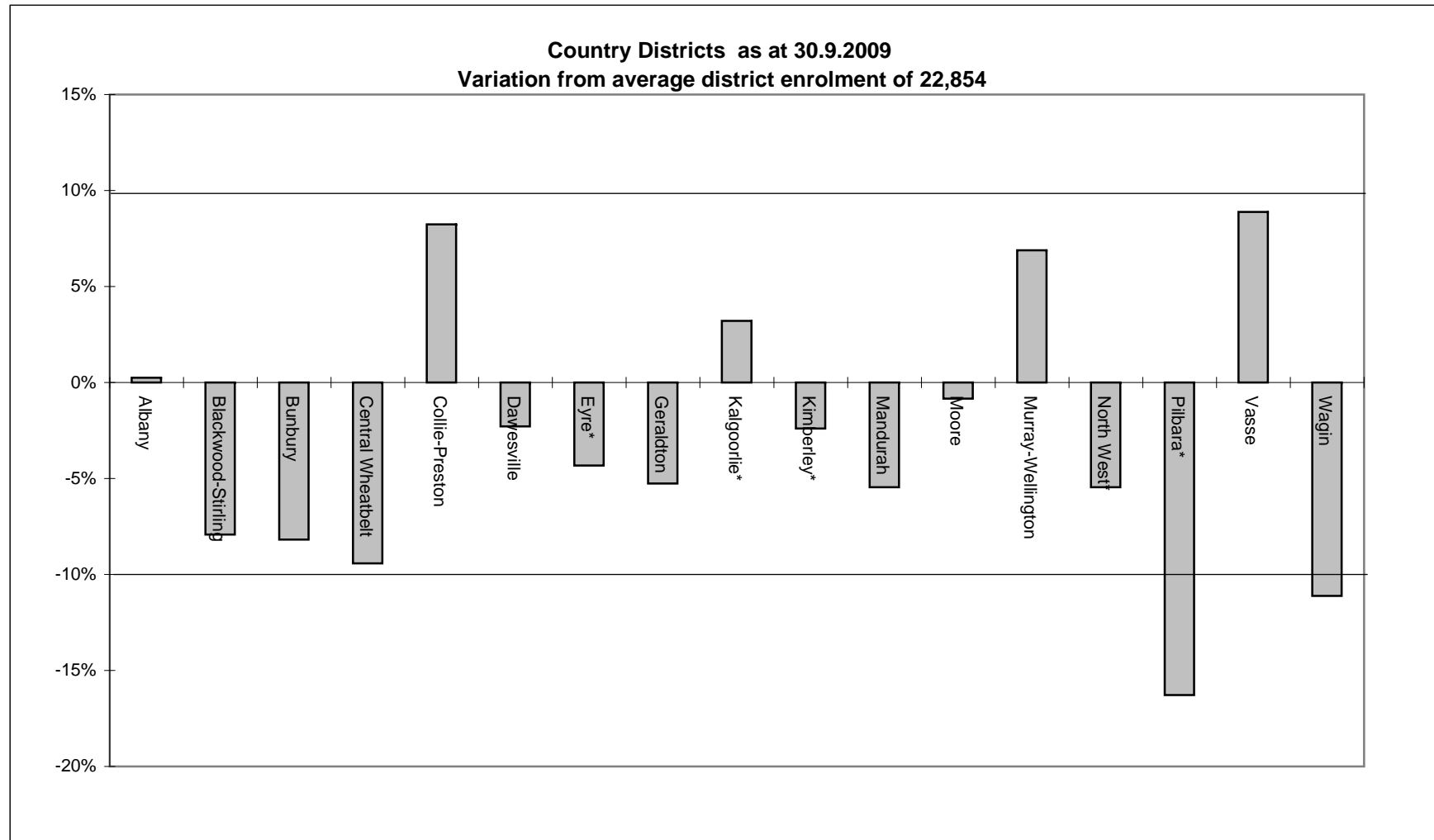
District	Land Area (km <sup>2</sup> )	LDA
Eyre	292,240	4,383
Kalgoorlie	632,816	9,492
Kimberley	419,078	6,286
North West	409,083	6,136
Pilbara	527,513	7,912
		34,209





\* indicates Large District

Note: Large districts (100,000 km<sup>2</sup> or greater) qualify for a Large District Allowance (LDA). This allowance is calculated by multiplying the square kilometres of the district by 1.5%. The final number, calculated by adding the allowance to the number of electors in the district, must be within a range of 20% less or 10% greater than the average district enrolment.



\* indicates Large District

Note: Large districts (100,000 km<sup>2</sup> or greater) qualify for a Large District Allowance (LDA). This allowance is calculated by multiplying the square kilometres of the district by 1.5%. The final number, calculated by adding the allowance to the number of electors in the district, must be within a range of 20% less or 10% greater than the average district enrolment.

## Metropolitan Enrolment

Electors 26.2.2007	Average District Enrolment	Electors 15.8.2008	Average District Enrolment	Electors 30.9.2009	Average District Enrolment	% change in enrolment 26.2.2007 to 30.9.2009
935,539	21,350	991,040	22,549	1,005,837	22,854	7.51%
(-10%)	19,215	(-10%)	20,294	(-10%)	20,569	
(+10%)	23,485	(+10%)	24,804	(+10%)	25,140	

The quotient for the metropolitan area was previously determined by dividing the total enrolment (number of electors) for that area by the number of districts (34) in that area. Since the 2007 Electoral Distribution, the average district enrolment now applies. This is calculated by dividing the total enrolment for the State by the number of districts in the state. Due to amendments to the legislation, there was an increase in the number of districts in the State from 57 to 59.

## Country Enrolment - Includes LDA

Electors 26.2.2007 Includes LDA	Average District Enrolment	Electors 15.8.2008 Includes LDA	Average District Enrolment	Electors 30.9.2009 Includes LDA	Average District Enrolment	% change in enrolment 26.2.2007 to 30.9.2009
358,335	21,350	373,568	22,549	376,765	22,854	5.14%
(-20%)	17,080	(-20%)	18,039	(-20%)	18,283	
(-10%)	19,215	(-10%)	20,294	(-10%)	20,569	
(+10%)	23,485	(+10%)	24,804	(+10%)	25,140	

The quotient for the country area was previously determined by dividing the total enrolment (number of electors) for that area by the number of districts (23) in that area. Since the 2007 Electoral Distribution, the average district enrolment will now apply. This is calculated by dividing the total enrolment for the State by the number of districts in the State. Due to amendments to the legislation, there was an increase in the number of districts from 57 to 59.

In addition, in the 2007 Electoral Distribution, large districts (100,000 km<sup>2</sup> or greater) qualified for a Large District Allowance (LDA). This allowance is calculated by multiplying the square kilometres of the district by 1.5%. The final number, calculated by adding the allowance to the number of electors in the district, must be within a range of 20% less or 10% greater than the average district enrolment.

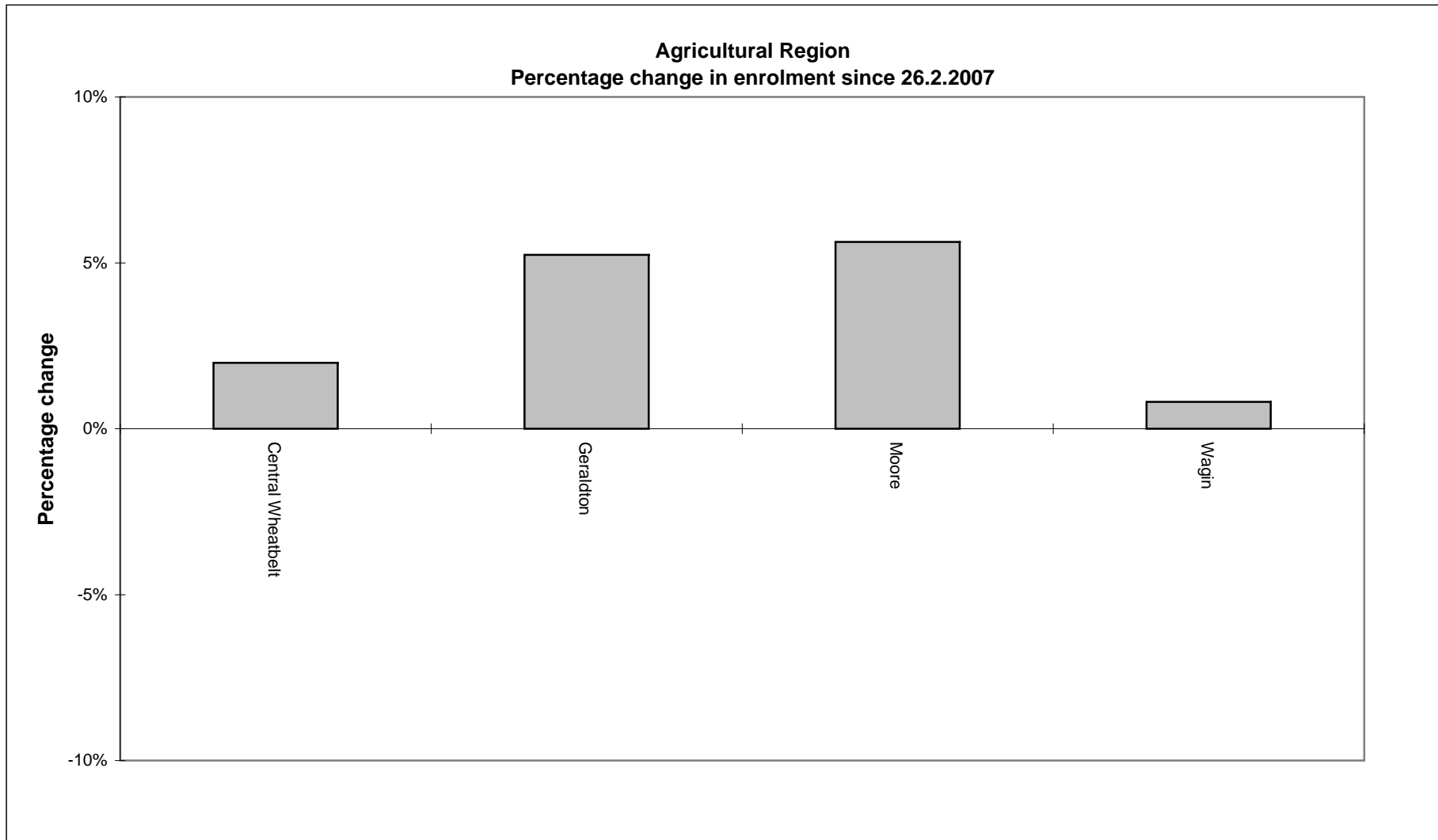
## Legislative Council Regional Enrolment - Includes LDA

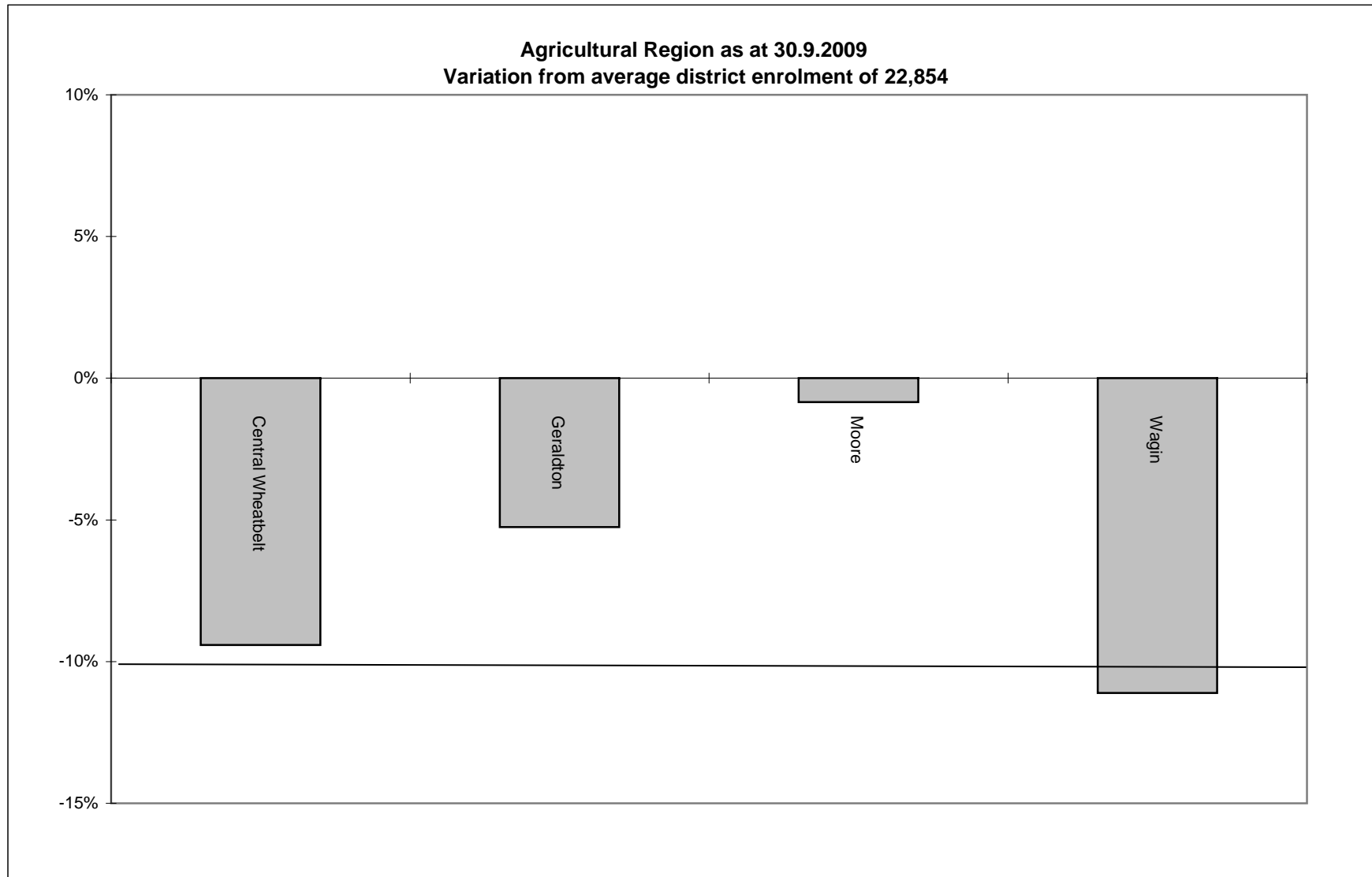
Region	Enrolment 26.2.2007	Enrolment 15.8.2008	Enrolment 30.9.2009
East Metropolitan	311,378	327,550	332,097
North Metropolitan	312,578	332,146	337,703
South Metropolitan	311,583	331,344	336,037
Agricultural	82,479	84,553	85,331
Mining and Pastoral	107,985	110,214	108,501
South West	167,871	178,801	182,933
<b>Total</b>	<b>1,293,874</b>	<b>1,364,608</b>	<b>1,382,602</b>

### Agricultural Region

District	Enrolment 26.2.2007	Variation from average district enrolment at 26.2.2007	Enrolment 15.8.2008	Variation from average district enrolment at 15.8.2008	Enrolment 30.9.2009	Variation from average district enrolment at 30.9.2009	% change in enrolment 26.2.2007 to 30.9.2009
<b>Central Wheatbelt</b>	20,299	-4.92%	20,491	-9.13%	20,702	-9.42%	1.99%
<b>Geraldton</b>	20,575	-3.63%	21,399	-5.10%	21,653	-5.26%	5.24%
<b>Moore</b>	21,453	0.48%	22,277	-1.21%	22,661	-0.85%	5.63%
<b>Wagin</b>	20,152	-5.61%	20,386	-9.59%	20,315	-11.11%	0.81%
<b>Total</b>	82,479		84,553		85,331		3.46%
	Average district enrolment	21,350	Average district enrolment	22,549	Average district enrolment	22,854	

Note: The average district enrolment is calculated by taking the Statewide enrolment and dividing it by the 59 districts.





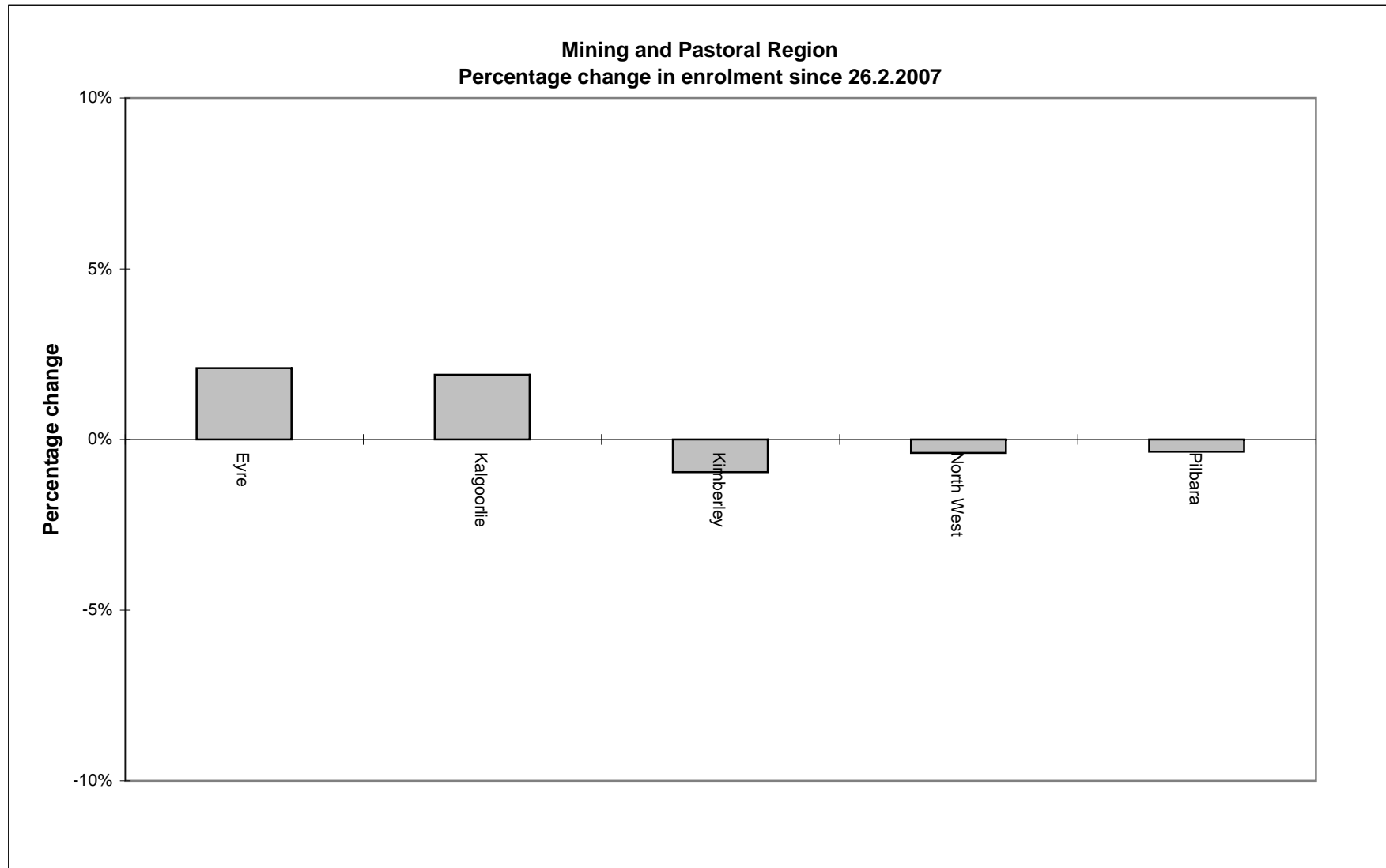
## Mining and Pastoral Region

District	Enrolment 26.2.2007 Includes LDA	Variation from average district enrolment at 26.2.2007	Enrolment 15.8.2008 Includes LDA	Variation from average district enrolment at 15.8.2008	Enrolment 30.9.2009 Includes LDA	Variation from average district enrolment at 30.9.2009	% change in enrolment 26.2.2007 to 30.9.2009
<b>Eyre</b>	21,419	0.32%	22,181	-1.63%	21,866	-4.32%	2.09%
<b>Kalgoorlie</b>	23,148	8.42%	23,630	4.79%	23,587	3.21%	1.90%
<b>Kimberley</b>	22,522	5.49%	22,944	1.75%	22,306	-2.40%	-0.96%
<b>North West</b>	21,694	1.61%	22,098	-2.00%	21,608	-5.45%	-0.40%
<b>Pilbara</b>	19,202	-10.06%	19,361	-14.14%	19,134	-16.28%	-0.35%
<b>Total</b>	107,985		110,214		108,501		0.48%
	Average district enrolment	21,350	Average district enrolment	22,549	Average district enrolment	22,854	

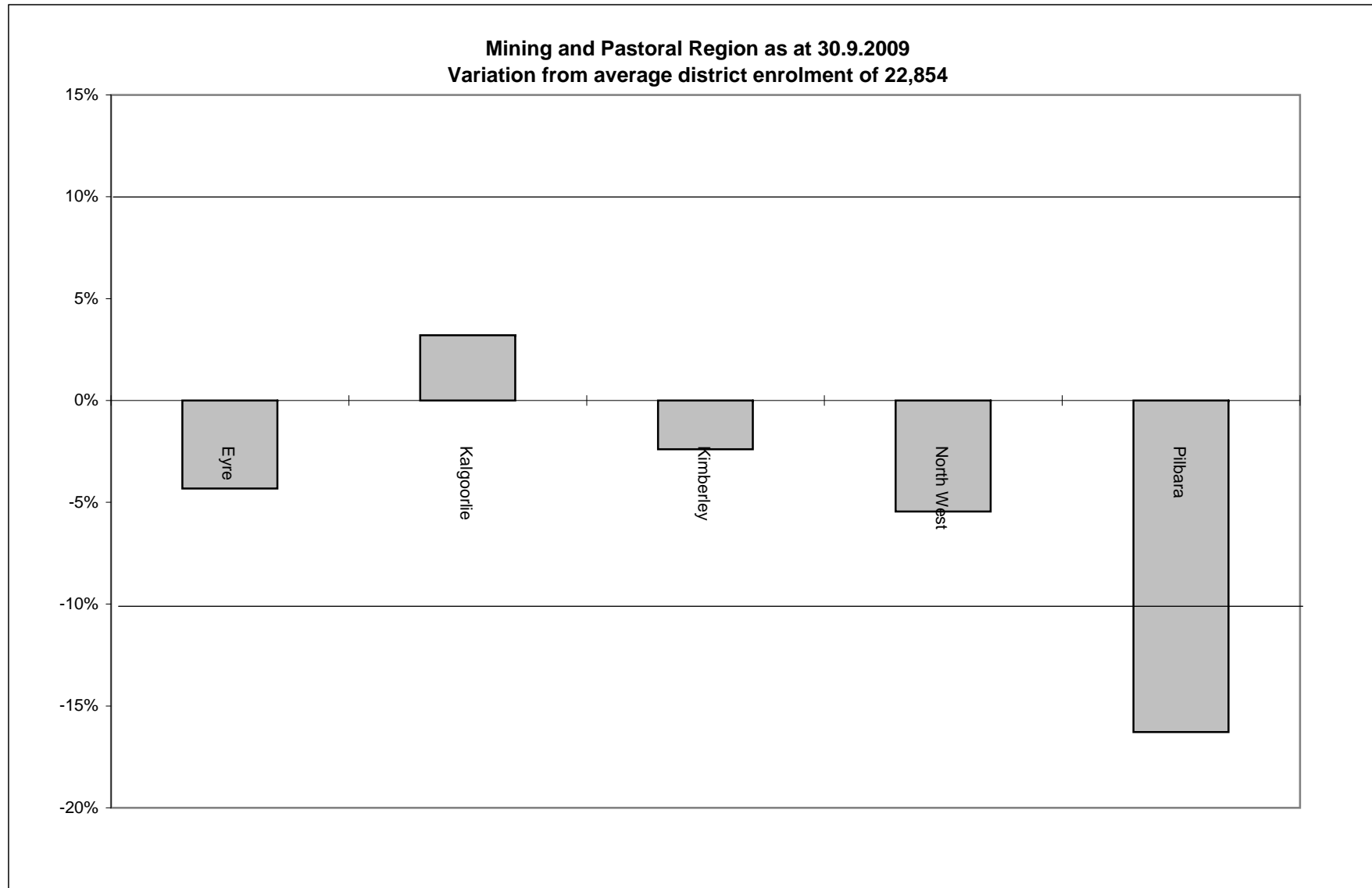
Note: The average district enrolment is calculated by taking the Statewide enrolment and dividing it by the 59 districts.

District	Land Area (km <sup>2</sup> )	LDA
<b>Eyre</b>	292,240	4,383
<b>Kalgoorlie</b>	632,816	9,492
<b>Kimberley</b>	419,078	6,286
<b>North West</b>	409,083	6,136
<b>Pilbara</b>	527,513	7,912
<b>TOTAL</b>		<b>34,209</b>

Amendments to legislation determined that large districts (100,000 km<sup>2</sup> or greater) qualified for a Large District Allowance (LDA). This allowance is calculated by multiplying the square kilometres of the district by 1.5%. The final number, calculated by adding the allowance to the number of electors in the district, must be within a range of 20% less or 10% greater than the average district enrolment.



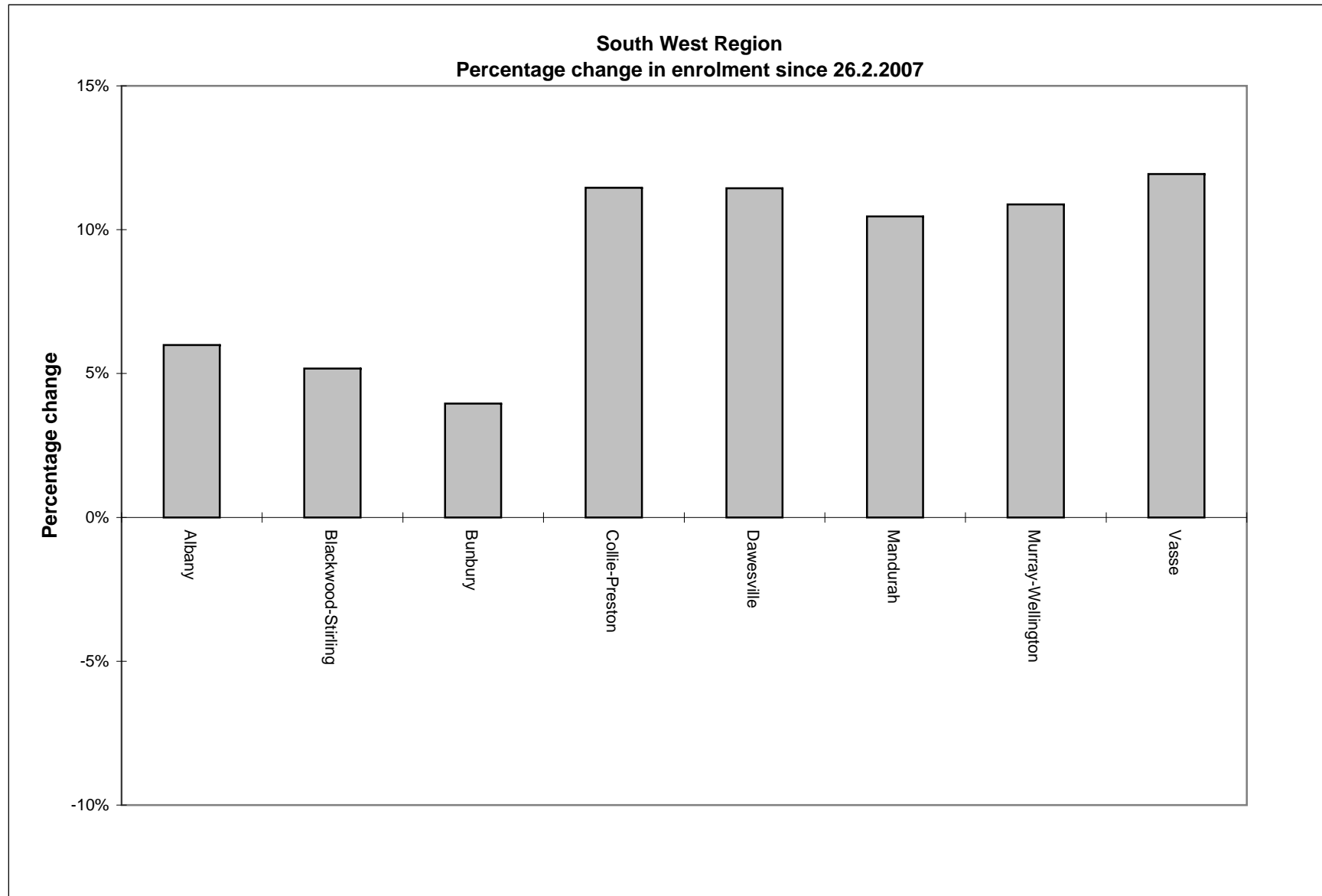


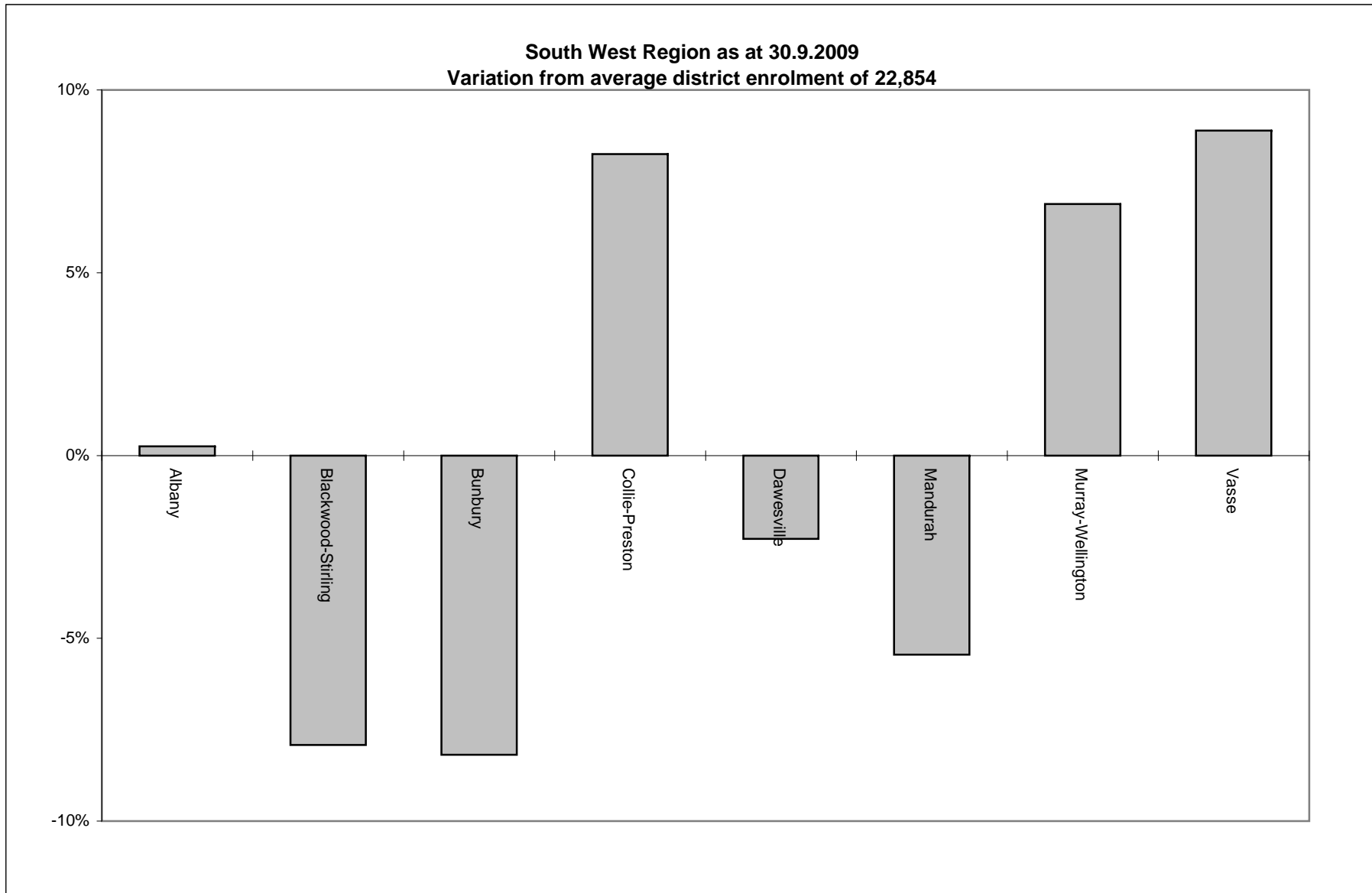


**South West Region**

District	Enrolment 26.2.2007	Variation from average district enrolment at 26.2.2007	Enrolment 15.8.2008	Variation from average district enrolment at 15.8.2008	Enrolment 30.9.2009	Variation from average district enrolment at 30.9.2009	% change in enrolment 26.2.2007 to 30.9.2009
<b>Albany</b>	21,616	1.25%	22,506	-0.19%	22,911	0.25%	5.99%
<b>Blackwood-Stirling</b>	20,009	-6.28%	20,723	-8.10%	21,045	-7.92%	5.18%
<b>Bunbury</b>	20,185	-5.46%	20,917	-7.24%	20,984	-8.18%	3.96%
<b>Collie-Preston</b>	22,195	3.96%	23,869	5.85%	24,738	8.24%	11.46%
<b>Dawesville</b>	20,041	-6.13%	21,661	-3.94%	22,333	-2.28%	11.44%
<b>Mandurah</b>	19,563	-8.37%	21,101	-6.42%	21,609	-5.45%	10.46%
<b>Murray-Wellington</b>	22,030	3.19%	23,775	5.44%	24,427	6.88%	10.88%
<b>Vasse</b>	22,232	4.13%	24,249	7.54%	24,886	8.89%	11.94%
<b>Total</b>	167,871		178,801		182,933		8.97%
	Average district enrolment	21,350	Average district enrolment	22,549	Average district enrolment	22,854	

Note: The average district enrolment is calculated by taking the Statewide enrolment and dividing it by the 59 districts.

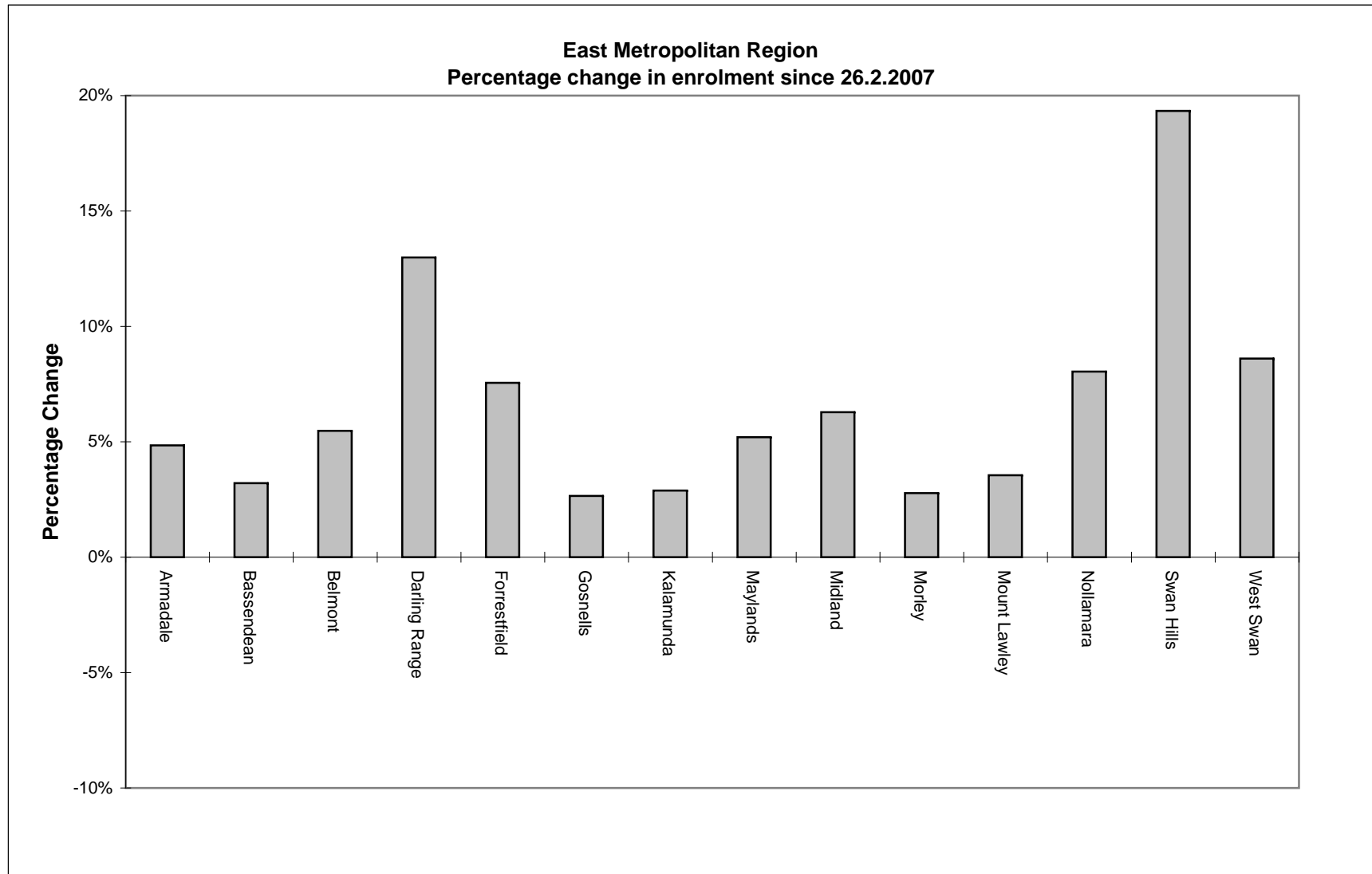


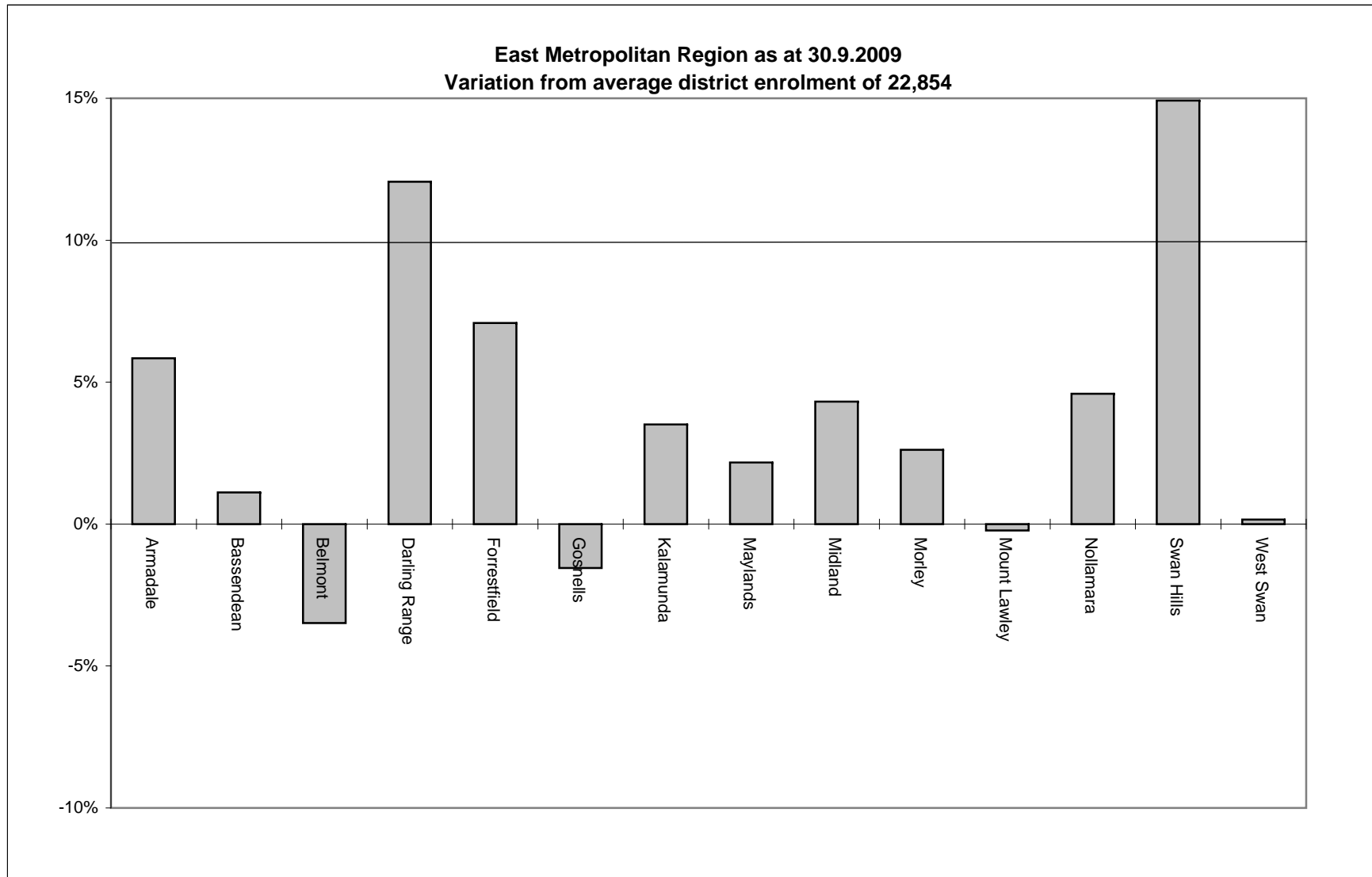


## East Metropolitan Region

District	Enrolment 26.2.2007	Variation from average district enrolment at 26.2.2007	Enrolment 15.8.2008	Variation from average district enrolment at 15.8.2008	Enrolment 30.9.2009	Variation from average district enrolment at 30.9.2009	% change in enrolment 26.2.2007 to 30.9.2009
Armadale	23,071	8.06%	24,116	6.95%	24,189	5.84%	4.85%
Bassendean	22,390	4.87%	23,098	2.43%	23,108	1.11%	3.21%
Belmont	20,912	-2.05%	22,109	-1.95%	22,058	-3.48%	5.48%
Darling Range	22,668	6.17%	24,072	6.75%	25,611	12.06%	12.98%
Forrestfield	22,754	6.58%	24,248	7.53%	24,473	7.08%	7.55%
Gosnells	21,918	2.66%	22,511	-0.17%	22,500	-1.55%	2.66%
Kalamunda	22,992	7.69%	23,516	4.29%	23,657	3.51%	2.89%
Maylands	22,195	3.96%	23,265	3.18%	23,349	2.17%	5.20%
Midland	22,432	5.07%	23,549	4.43%	23,841	4.32%	6.28%
Morley	22,818	6.88%	23,480	4.13%	23,452	2.62%	2.78%
Mount Lawley	22,020	3.14%	22,868	1.41%	22,802	-0.23%	3.55%
Nollamara	22,124	3.63%	23,570	4.53%	23,903	4.59%	8.04%
Swan Hills	22,008	3.08%	24,779	9.89%	26,263	14.92%	19.33%
West Swan	21,076	-1.28%	22,369	-0.80%	22,891	0.16%	8.61%
<b>Total</b>	311,378		327,550		332,097		6.65%
	Average District Enrolment	21,350	Average District Enrolment	22,549	Average District Enrolment	22,854	

Note: The average district enrolment is calculated by taking the Statewide enrolment and dividing it by the 59 districts.



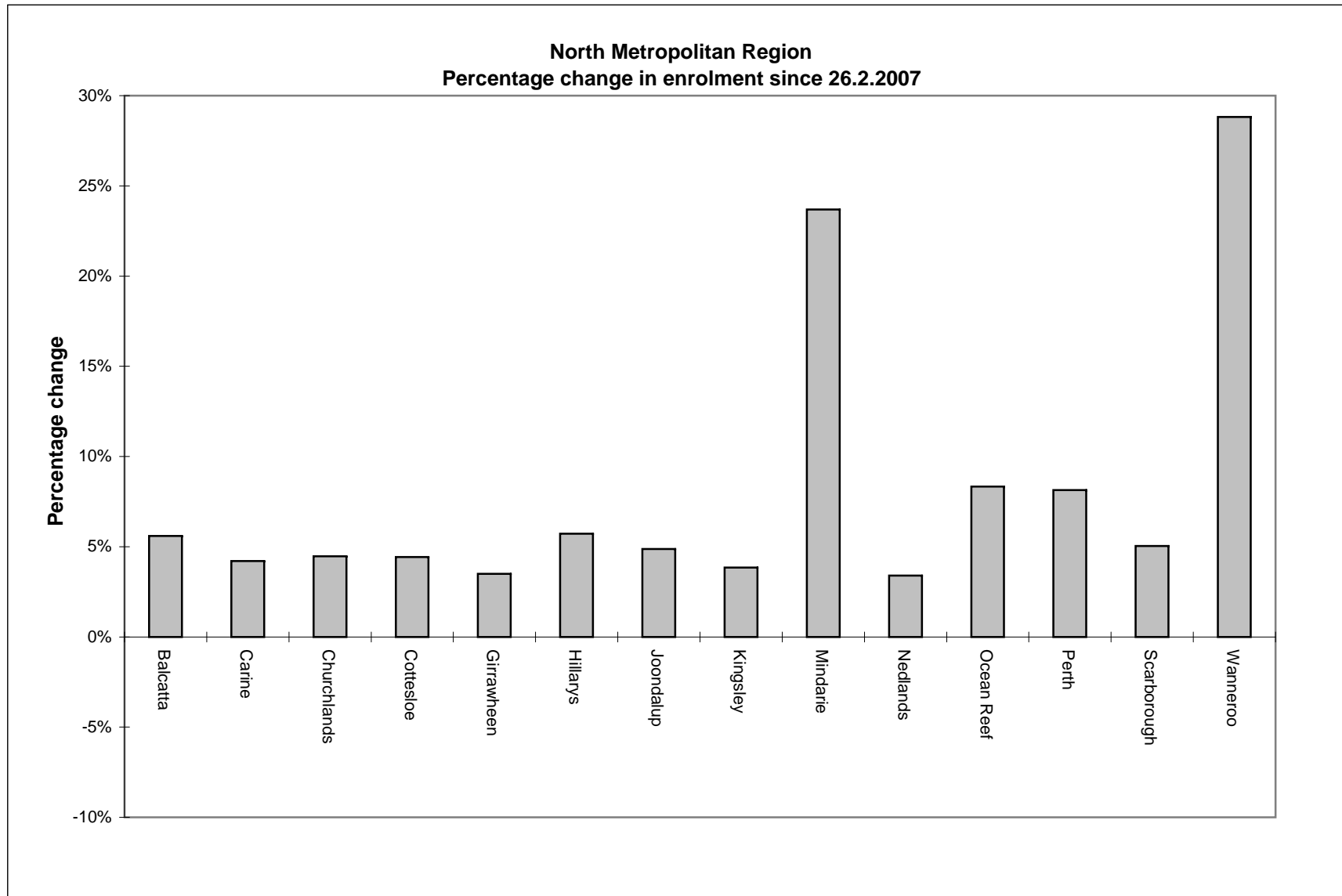


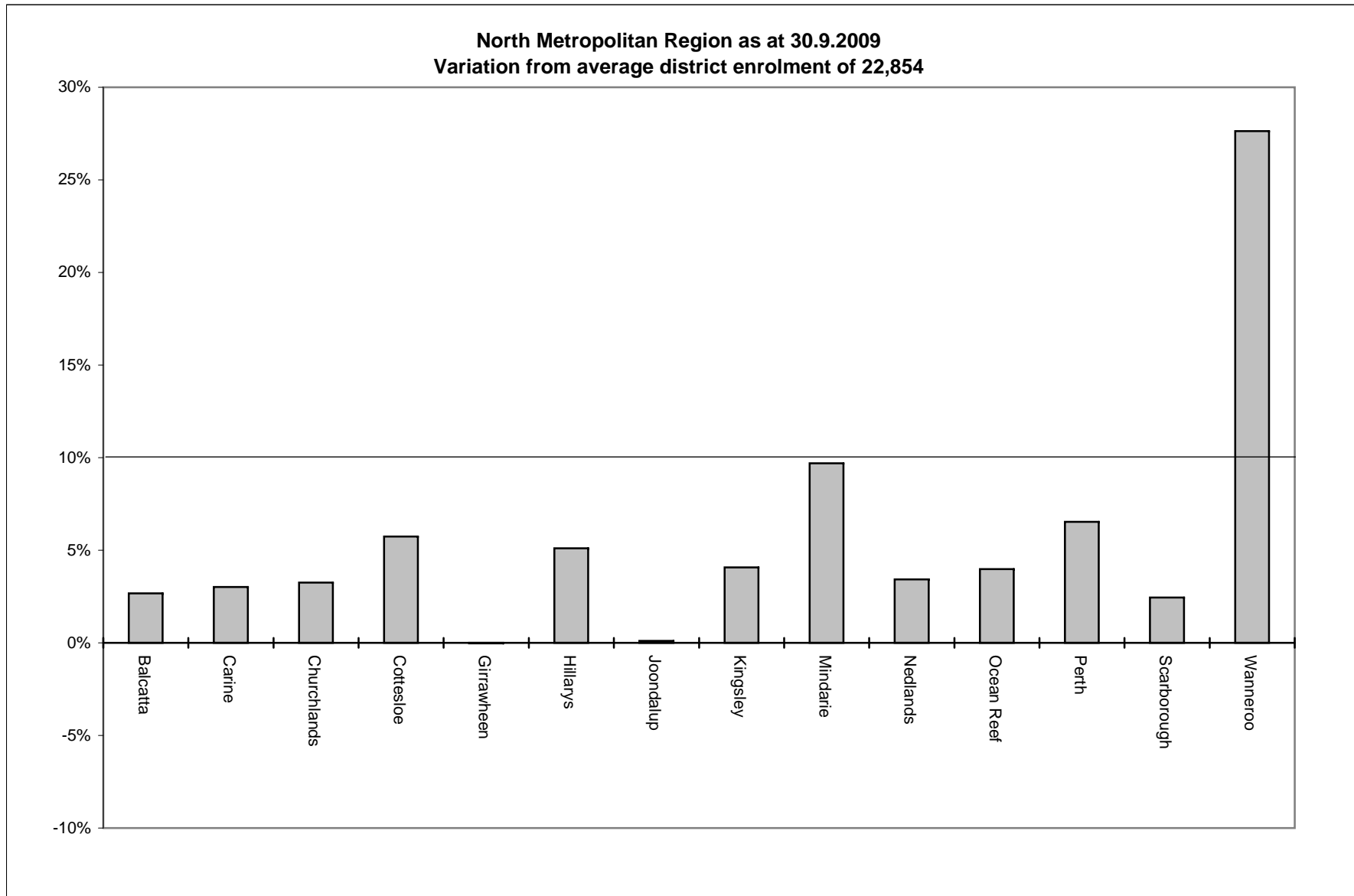
### North Metropolitan Region

District	Enrolment 26.2.2007	Variation from average district enrolment at 26.2.2007	Enrolment 15.8.2008	Variation from average district enrolment at 15.8.2008	Enrolment 30.9.2009	Variation from average district enrolment at 30.9.2009	% change in enrolment 26.2.2007 to 30.9.2009
<b>Balcatta</b>	22,223	4.09%	23,365	3.62%	23,465	2.67%	5.59%
<b>Carine</b>	22,595	5.83%	23,392	3.74%	23,544	3.02%	4.20%
<b>Churchlands</b>	22,589	5.80%	23,397	3.76%	23,599	3.26%	4.47%
<b>Cottesloe</b>	23,143	8.40%	24,035	6.59%	24,166	5.74%	4.42%
<b>Girrawheen</b>	22,076	3.40%	22,854	1.35%	22,849	-0.02%	3.50%
<b>Hillarys</b>	22,720	6.42%	23,676	5.00%	24,020	5.10%	5.72%
<b>Joondalup</b>	21,815	2.18%	22,945	1.76%	22,877	0.10%	4.87%
<b>Kingsley</b>	22,905	7.28%	23,642	4.85%	23,784	4.07%	3.84%
<b>Mindarie</b>	20,267	-5.07%	23,613	4.72%	25,069	9.69%	23.69%
<b>Nedlands</b>	22,860	7.07%	23,636	4.82%	23,637	3.43%	3.40%
<b>Ocean Reef</b>	21,936	2.74%	23,045	2.20%	23,764	3.98%	8.33%
<b>Perth</b>	22,514	5.45%	24,381	8.12%	24,347	6.53%	8.14%
<b>Scarborough</b>	22,292	4.41%	23,420	3.86%	23,414	2.45%	5.03%
<b>Wanneroo</b>	22,643	6.06%	26,745	18.61%	29,168	27.63%	28.82%
<b>Total</b>	312,578		332,146		337,703		8.04%
	Average District Enrolment	21,350	Average District Enrolment	22,549	Average District Enrolment	22,854	

Note: The average district enrolment is calculated by taking the Statewide enrolment and dividing it by the 59 districts.



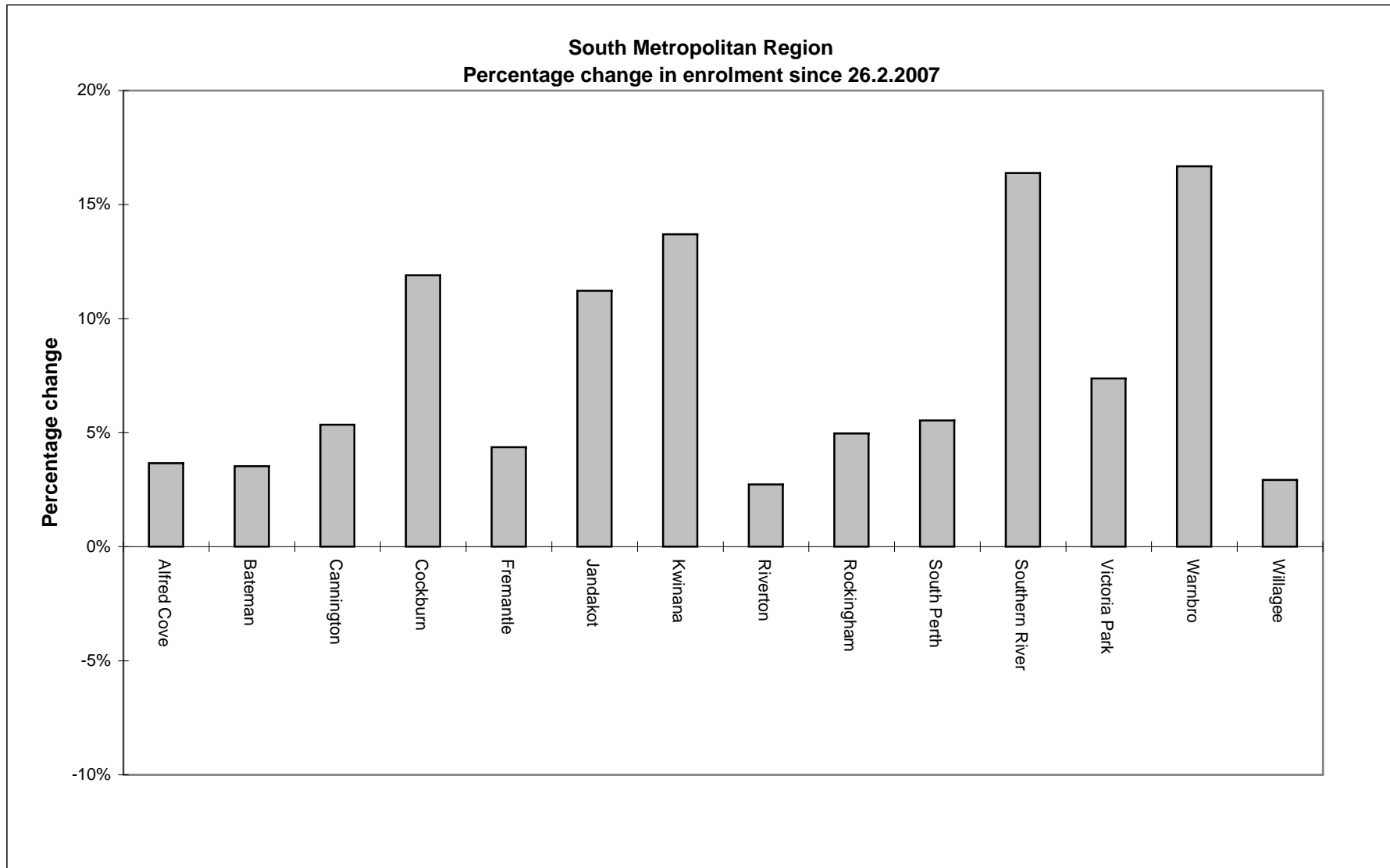


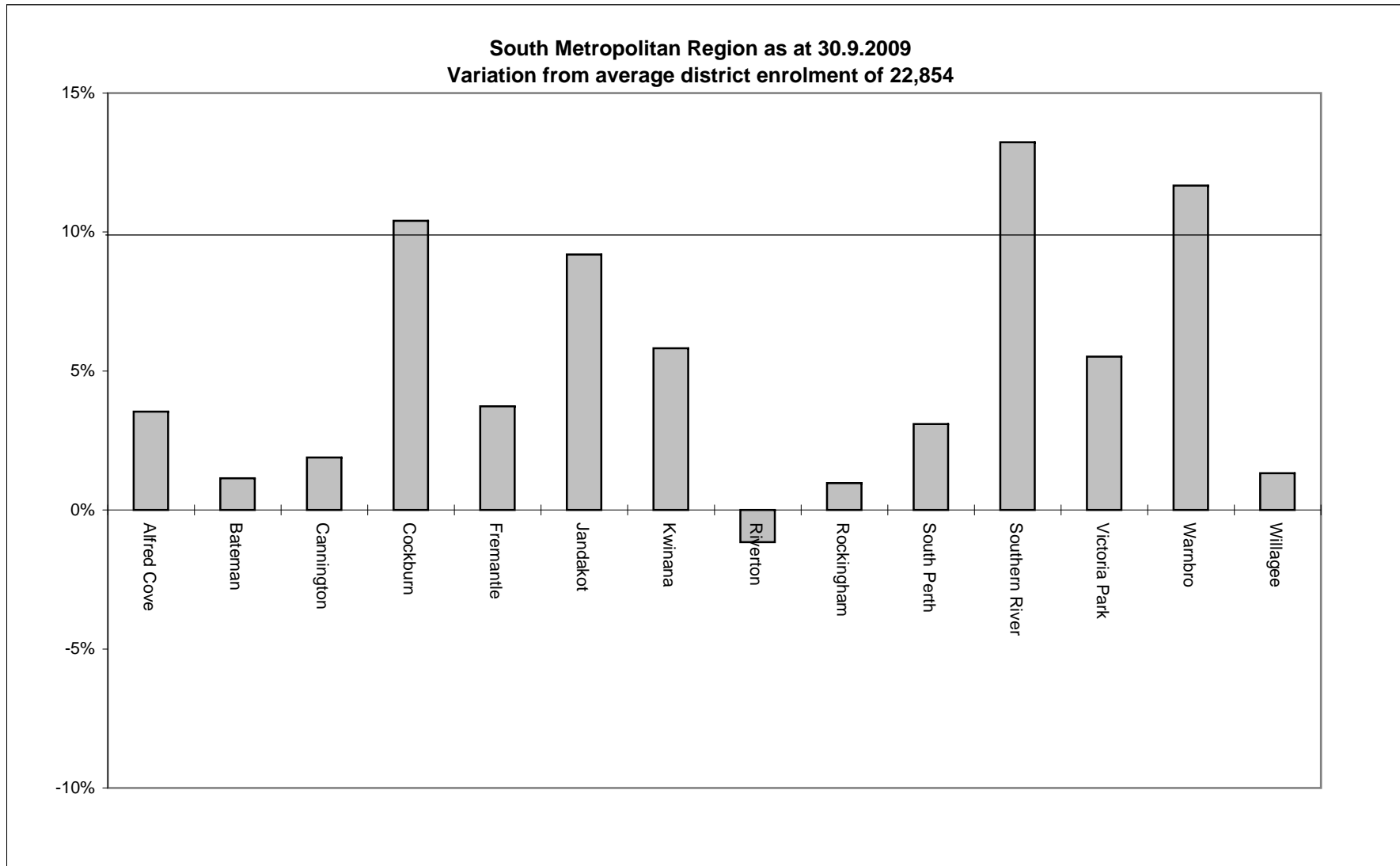


### South Metropolitan Region

District	Enrolment 26.2.2007	Variation from average district enrolment at 26.2.2007	Enrolment 15.8.2008	Variation from average district enrolment at 15.8.2008	Enrolment 30.9.2009	Variation from average district enrolment at 30.9.2009	% change in enrolment 26.2.2007 to 30.9.2009
Alfred Cove	22,827	6.92%	23,583	4.59%	23,662	3.53%	3.66%
Bateman	22,327	4.58%	23,031	2.14%	23,115	1.14%	3.53%
Cannington	22,102	3.52%	23,198	2.88%	23,285	1.89%	5.35%
Cockburn	22,550	5.62%	24,439	8.38%	25,233	10.41%	11.90%
Fremantle	22,715	6.39%	23,658	4.92%	23,707	3.73%	4.37%
Jandakot	22,435	5.08%	24,177	7.22%	24,954	9.19%	11.23%
Kwinana	21,271	-0.37%	23,491	4.18%	24,184	5.82%	13.69%
Riverton	21,989	2.99%	22,737	0.83%	22,590	-1.16%	2.73%
Rockingham	21,983	2.96%	22,903	1.57%	23,075	0.97%	4.97%
South Perth	22,324	4.56%	23,522	4.32%	23,561	3.09%	5.54%
Southern River	22,234	4.14%	24,632	9.24%	25,878	13.23%	16.39%
Victoria Park	22,457	5.19%	24,201	7.33%	24,115	5.52%	7.38%
Warnbro	21,873	2.45%	24,358	8.02%	25,522	11.67%	16.68%
Willagee	22,496	5.37%	23,414	3.84%	23,156	1.32%	2.93%
<b>Total</b>	<b>311,583</b>		<b>331,344</b>		<b>336,037</b>		<b>7.85%</b>
	Average District Enrolment	21,350	Average District Enrolment	22,549	Average District Enrolment	22,854	

Note: The average district enrolment is calculated by taking the Statewide enrolment and dividing it by the 59 districts.





### Range of Enrolments

Area	26.2.2007		30.9.2009	
	Highest	Lowest	Highest	Lowest
<b>Metropolitan</b>	<b>Cottesloe</b> 23,143	<b>Mindarie</b> 20,267	<b>Wanneroo</b> 29,168	<b>Belmont</b> 22,058
<b>Country</b>	<b>Kalgoorlie</b> 23,148 (includes LDA)	<b>Pilbara</b> 19,202 (includes LDA)	<b>Vasse</b> 24,886	<b>Pilbara</b> 19,134 (includes LDA)