



WESTERN AUSTRALIAN Electoral Commission

ELECTORAL ENROLMENT STATISTICS

31 December 2006

This report details State electoral enrolment figures as at 31 December 2006 and shows that on that date the total State enrolment was 1,257,529. The State enrolment is 7,123 less than at the roll close for the State general election. This reduction in enrolment is a normal feature of the election cycle and is due to continuous roll update initiatives.

This report includes figures that illustrate the percentage change in total enrolment for each electoral district since 11 February 2002. Enrolment figures taken at that date were used to calculate the quotas on which the last redistribution of State boundaries was based.

A handwritten signature in black ink that reads "Warwick Gately".

Warwick Gately AM
ELECTORAL COMMISSIONER

6 February 2007

Contact Details:

Western Australian Electoral Commission
Level 2, 111 St Georges Terrace
PERTH WA 6000

Postal Address:
GPO Box F316
PERTH WA 6841

Phone: (08) 9214 0400 or 13 63 06 (WA callers only)
Facsimile: (08) 9226 0577
Internet: www.waec.wa.gov.au
Email: waec@waec.wa.gov.au

Contents	Page No.
State Enrolment	3
Monthly Metropolitan and Country Enrolments and Quotients from October 2000 to December 2006	4
Metropolitan Area Enrolment Statistics	5
Country Area Enrolment Statistics	8
Metropolitan and Country Enrolments and Quotients as at 11.2.2002, 26.2.2005 and 31.12.2006	11
Legislative Council Regional Enrolments as at 11.2.2002, 26.2.2005 and 31.12.2006	11
Regional Enrolments and Quotient by Districts as at 11.2.2002, 26.2.2005 and 31.12.2006	12
Range of Enrolments as at 11.2.2002, 26.2.2005 and 31.12.2006	30

STATE ENROLMENT

22 November 1996	1,119,992	Increase from 1993 to November 1996 is 103,242 or 10.15%	Close of roll for the 14 December 1996 State General Election.
18 January 2001	1,193,508	Increase from November 1996 to 18 January 2001 is 73,516 or 6.56%	Close of roll for the 10 February 2001 State General Election.
11 February 2002	1,215,377	Increase from January 2001 to 11 February 2002 is 21,869 or 1.83%	Relevant date under section 2A (5) of the <i>Electoral Distribution Act 1947</i> for the determination of quotients for the 2003 division of the State.
31 January 2005	1,264,652	Increase from 11 February 2002 to 31 January 2005 is 49,275 or 4.05%	Close of roll for the 26 February 2005 State General Election.
31 December 2006	1,257,529	Decrease from 31 January 2005 to 31 December 2006 is 7,123 or -0.56%.	

Monthly Enrolments and Quotients

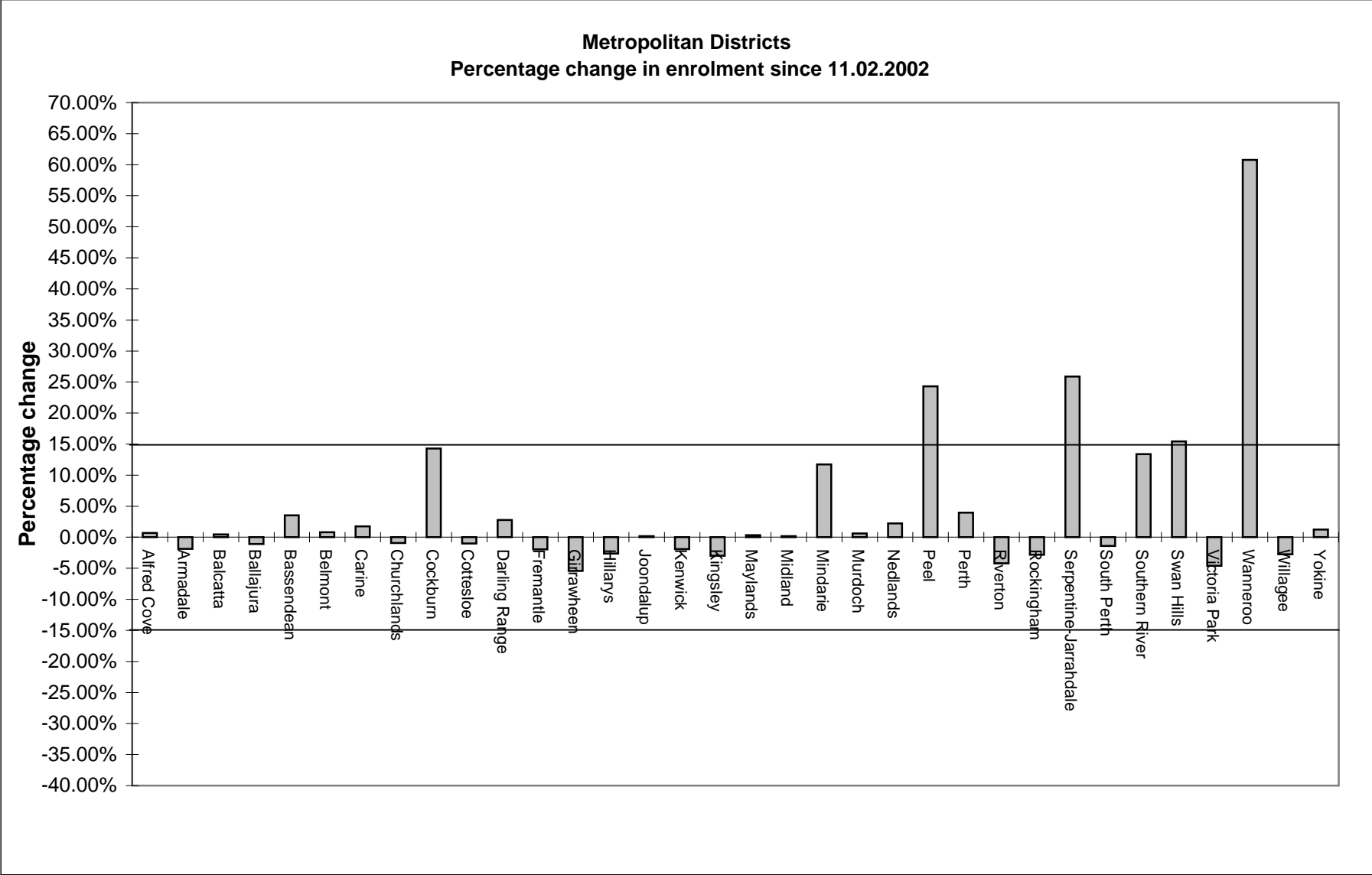
Year	Month	Metropolitan Enrolment	Metropolitan Quotient	Country Enrolment	Country Quotient	Total Enrolment
2000	October	869,341	25,569	305,981	13,303	1,175,322
	November	870,634	25,607	305,826	13,297	1,176,460
	December	872,645	25,666	306,293	13,317	1,178,938
2001	January	883,721	25,992	309,787	13,469	1,193,508
	February	888,690	26,138	311,181	13,530	1,199,871
	March	891,627	26,224	312,767	13,599	1,204,394
	April	891,014	26,206	312,448	13,585	1,203,462
	May	894,058	26,296	312,875	13,603	1,206,933
	June	893,829	26,289	312,907	13,605	1,206,736
	July	880,674	25,902	310,170	13,486	1,190,844
	August	882,124	25,945	310,573	13,503	1,192,697
	September	887,452	26,102	312,231	13,575	1,199,683
	October	907,690	26,697	299,321	13,014	1,207,011
	November	895,887	26,350	315,096	13,700	1,210,983
	December	901,859	26,525	317,120	13,789	1,218,979
2002	January	903,320	26,568	317,280	13,795	1,220,600
	February	902,507	26,544	316,840	13,776	1,219,347
	March	898,463	26,425	315,927	13,736	1,214,390
	April	897,458	26,396	315,462	13,716	1,212,920
	May	895,403	26,335	315,143	13,702	1,210,546
	June	892,013	26,236	314,712	13,683	1,206,725
	July	890,463	26,190	314,002	13,653	1,204,465
	August	890,930	26,204	314,291	13,665	1,205,221
	September	893,310	26,274	315,166	13,703	1,208,476
	October	894,850	26,319	316,022	13,740	1,210,872
	November	897,970	26,411	316,223	13,749	1,214,193
	December	899,158	26,446	316,385	13,756	1,215,543
2003	January	897,871	26,408	316,269	13,751	1,214,140
	February	892,743	26,257	315,421	13,714	1,208,164
	March	895,109	26,327	316,595	13,765	1,211,704
	April	895,715	26,345	316,352	13,754	1,212,067
	May	895,847	26,348	316,590	13,765	1,212,437
	June	893,961	26,293	315,972	13,738	1,209,933
	July	892,982	26,264	315,585	13,721	1,208,567
	August	885,429	26,042	313,501	13,630	1,198,930
	September	888,687	26,138	313,973	13,651	1,202,660
	October	892,350	26,246	314,894	13,691	1,207,244
	November	894,698	26,315	315,053	13,698	1,209,751
	December	895,856	26,349	315,401	13,713	1,211,257
2004	January	896,027	26,354	315,428	13,714	1,211,455
	February	895,206	26,330	314,875	13,690	1,210,081
	March	895,968	26,352	314,757	13,685	1,210,725
	April	899,119	26,445	314,817	13,688	1,213,936
	May	900,429	26,483	314,673	13,681	1,215,102
	June	904,740	26,610	315,622	13,723	1,220,362
	July	906,459	26,661	316,548	13,763	1,223,007
	August	902,037	26,531	314,836	13,689	1,216,873
	September	927,944	27,292	321,897	13,996	1,249,841
	October	933,206	27,447	322,534	14,023	1,255,740
	November	937,312	27,568	325,839	14,167	1,263,151
	December	938,633	27,607	326,337	14,189	1,264,970
2005	January	937,528	27,574	327,124	14,223	1,264,652
	February	939,731	27,639	327,627	14,245	1,267,358
	March	942,529	27,721	329,272	14,316	1,271,801
	April	944,708	27,786	329,510	14,327	1,274,218
	May	944,309	27,774	329,082	14,308	1,273,391
	June	939,938	27,645	326,879	14,212	1,266,817
	July	936,438	27,542	325,241	14,141	1,261,679
	August	929,807	27,347	323,283	14,056	1,253,090
	September	933,403	27,453	324,180	14,095	1,257,583
	October	931,308	27,391	323,838	14,080	1,255,146
	November	933,901	27,468	324,465	14,107	1,258,366
	December	933,898	27,468	324,143	14,093	1,258,041
2006	January	934,804	27,494	324,324	14,101	1,259,128
	February	935,653	27,519	324,339	14,102	1,259,992
	March	933,950	27,469	323,738	14,076	1,257,688
	April	935,431	27,513	323,718	14,075	1,259,149
	May	934,148	27,475	323,571	14,068	1,257,719
	June	937,315	27,568	324,530	14,110	1,261,845
	July	937,309	27,568	324,529	14,110	1,261,838
	August	930,316	27,362	322,890	14,039	1,253,206
	September	929,274	27,332	322,822	14,036	1,252,096
	October	932,303	27,421	323,876	14,082	1,256,179
	November	932,312	27,421	323,702	14,074	1,256,014
	December	933,372	27,452	324,157	14,094	1,257,529

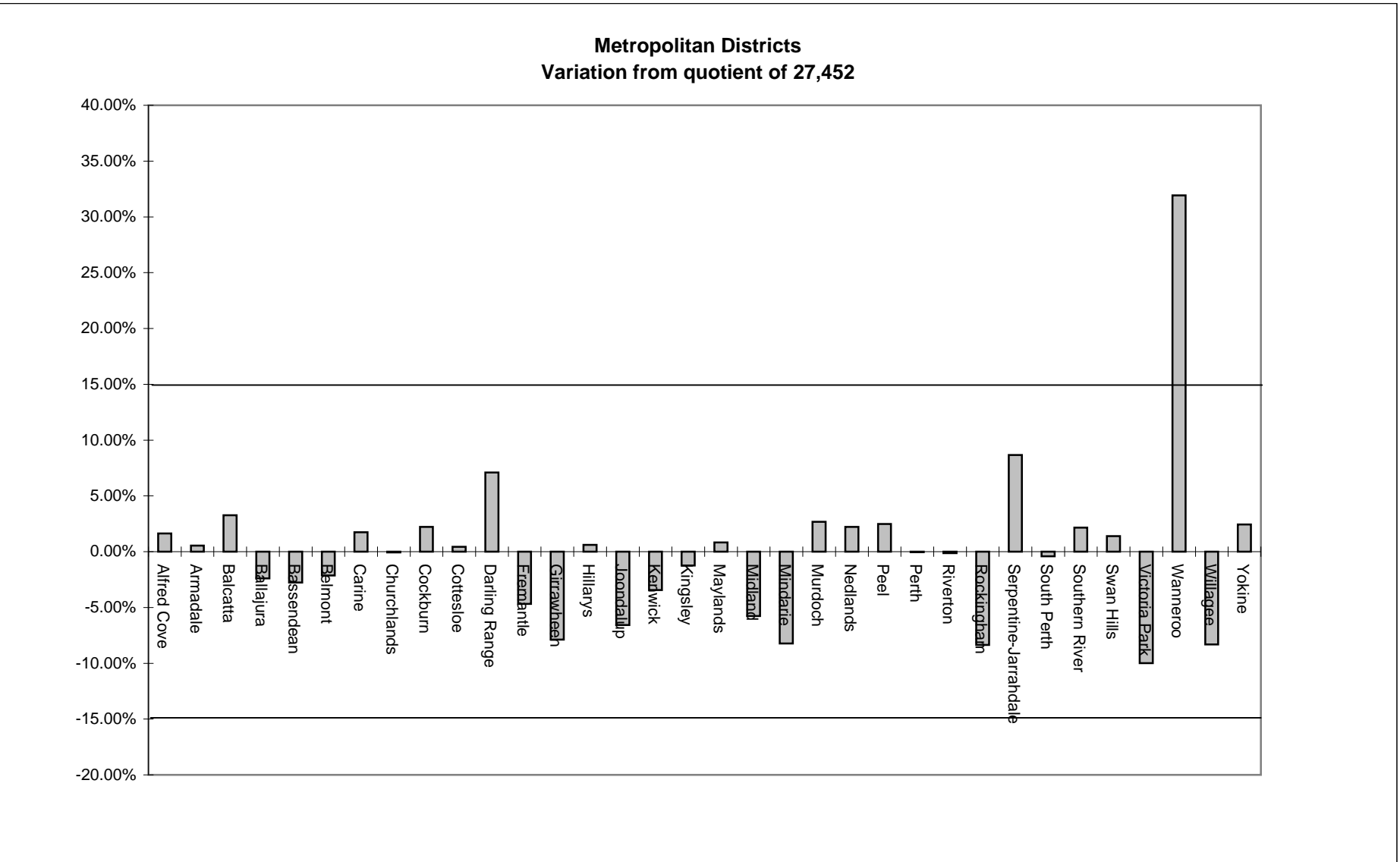
Note: The above quotient figures are determined by dividing the total enrolments (number of electors) for that area by the number of districts in that area (34 in the metropolitan area and 23 in the country area).

Legislative Assembly

Metropolitan Area Enrolment Statistics

District	Enrolment 11.2.2002	Variation from Quotient	Enrolment 26.2.2005	Variation from Quotient	Enrolment 31.12.2006	Variation from Quotient	% change in enrolment 11.2.2002 to 31.12.2006
Alfred Cove	27,708	4.74%	28,143	2.06%	27,901	1.64%	0.70%
Armadale	28,125	6.31%	28,225	2.36%	27,599	0.54%	-1.87%
Balcatta	28,224	6.69%	28,517	3.42%	28,349	3.27%	0.44%
Ballajura	27,095	2.42%	27,171	-1.46%	26,796	-2.39%	-1.10%
Bassendean	25,780	-2.55%	26,886	-2.50%	26,694	-2.76%	3.55%
Belmont	26,657	0.77%	27,059	-1.87%	26,869	-2.12%	0.80%
Carine	27,453	3.77%	28,207	2.29%	27,930	1.74%	1.74%
Churchlands	27,686	4.66%	28,001	1.55%	27,433	-0.07%	-0.91%
Cockburn	24,556	-7.18%	27,257	-1.15%	28,061	2.22%	14.27%
Cottesloe	27,845	5.26%	28,031	1.66%	27,570	0.43%	-0.99%
Darling Range	28,609	8.14%	29,549	7.16%	29,401	7.10%	2.77%
Fremantle	26,689	0.89%	26,742	-3.02%	26,169	-4.67%	-1.95%
Girrawheen	26,741	1.08%	26,136	-5.22%	25,292	-7.87%	-5.42%
Hillarys	28,364	7.22%	28,593	3.69%	27,617	0.60%	-2.63%
Joondalup	25,607	-3.20%	26,177	-5.07%	25,649	-6.57%	0.16%
Kenwick	27,022	2.15%	27,287	-1.04%	26,510	-3.43%	-1.89%
Kingsley	27,949	5.65%	28,079	1.83%	27,112	-1.24%	-2.99%
Maylands	27,591	4.30%	27,987	1.50%	27,681	0.83%	0.33%
Midland	25,823	-2.39%	26,366	-4.38%	25,870	-5.76%	0.18%
Mindarie	22,555	-14.74%	24,723	-10.34%	25,196	-8.22%	11.71%
Murdoch	28,015	5.90%	28,553	3.55%	28,189	2.68%	0.62%
Nedlands	27,453	3.77%	28,692	4.05%	28,064	2.23%	2.23%
Peel	22,633	-14.45%	26,873	-2.54%	28,132	2.48%	24.30%
Perth	26,399	-0.21%	27,727	0.55%	27,440	-0.04%	3.94%
Riverton	28,614	8.16%	28,412	3.04%	27,417	-0.13%	-4.18%
Rockingham	25,895	-2.11%	26,192	-5.01%	25,160	-8.35%	-2.84%
Serpentine-Jarrahdale	23,702	-10.40%	28,050	1.72%	29,832	8.67%	25.86%
South Perth	27,725	4.80%	28,194	2.25%	27,336	-0.42%	-1.40%
Southern River	24,732	-6.51%	26,990	-2.12%	28,046	2.16%	13.40%
Swan Hills	24,117	-8.84%	27,097	-1.73%	27,835	1.40%	15.42%
Victoria Park	25,903	-2.08%	26,209	-4.95%	24,712	-9.98%	-4.60%
Wanneroo	22,525	-14.85%	31,521	14.31%	36,218	31.93%	60.79%
Willagee	25,882	-2.16%	25,645	-7.00%	25,168	-8.32%	-2.76%
Yokine	27,776	5.00%	28,237	2.40%	28,124	2.45%	1.25%
Total	899,450		937,528		933,372		3.77%
	Quotient	26,454	Quotient	27,574	Quotient	27,452	

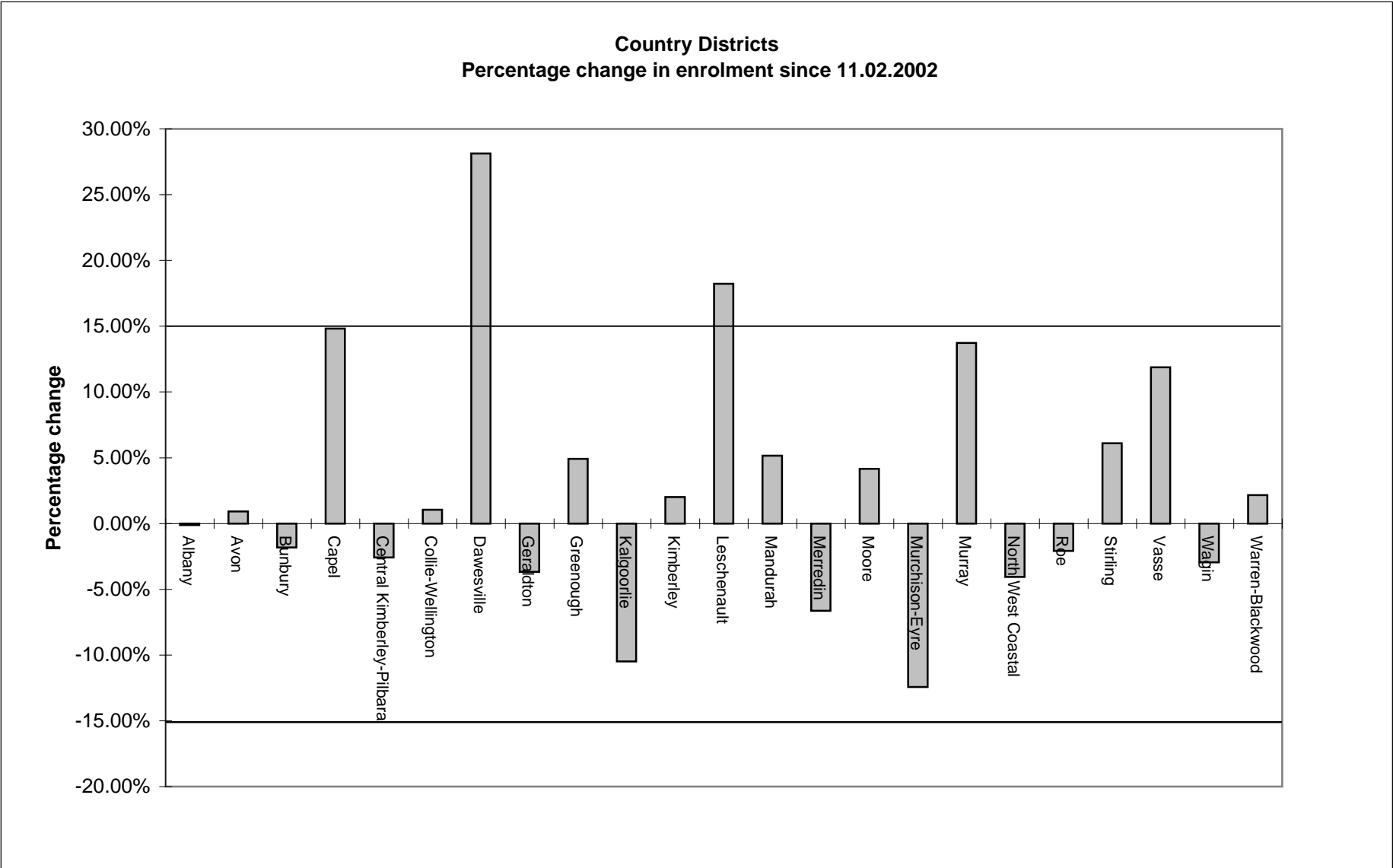


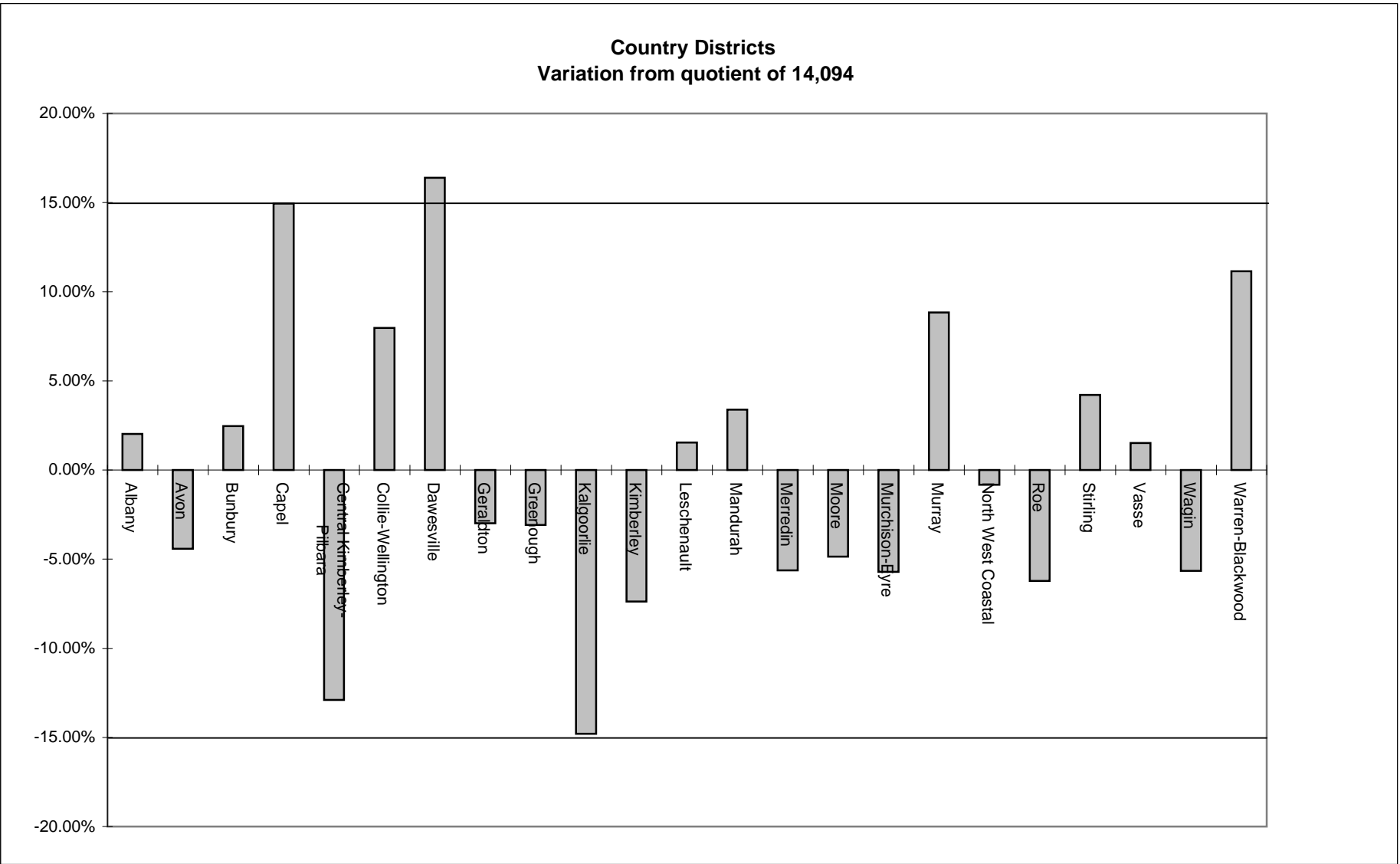


Legislative Assembly

Country Area Enrolment Statistics

District	Enrolment 11.2.2002	Variation from Quotient	Enrolment 26.2.2005	Variation from Quotient	Enrolment 31.12.2006	Variation from Quotient	% change in enrolment 11.2.2002 to 31.12.2006
Albany	14,396	4.81%	14,654	3.03%	14,379	2.02%	-0.12%
Avon	13,349	-2.82%	13,543	-4.78%	13,471	-4.42%	0.91%
Bunbury	14,709	7.08%	14,770	3.85%	14,441	2.46%	-1.82%
Capel	14,110	2.72%	15,670	10.18%	16,200	14.94%	14.81%
Central Kimberley-Pilbara	12,601	-8.26%	13,403	-5.76%	12,276	-12.90%	-2.58%
Collie-Wellington	15,060	9.64%	15,430	8.49%	15,217	7.97%	1.04%
Dawesville	12,804	-6.78%	15,445	8.59%	16,405	16.40%	28.12%
Geraldton	14,193	3.33%	14,212	-0.08%	13,673	-2.99%	-3.66%
Greenough	13,021	-5.20%	13,467	-5.31%	13,660	-3.08%	4.91%
Kalgoorlie	13,414	-2.34%	12,873	-9.49%	12,008	-14.80%	-10.48%
Kimberley	12,797	-6.84%	13,147	-7.56%	13,054	-7.38%	2.01%
Leschenault	12,104	-11.88%	13,710	-3.61%	14,311	1.54%	18.23%
Mandurah	13,857	0.88%	14,653	3.02%	14,572	3.39%	5.16%
Merredin	14,244	3.70%	13,826	-2.79%	13,300	-5.63%	-6.63%
Moore	12,873	-6.28%	13,316	-6.38%	13,409	-4.86%	4.16%
Murchison-Eyre	15,174	10.47%	14,406	1.29%	13,289	-5.71%	-12.42%
Murray	13,488	-1.81%	14,799	4.05%	15,340	8.84%	13.73%
North West Coastal	14,570	6.07%	14,570	2.44%	13,978	-0.82%	-4.06%
Roe	13,498	-1.73%	13,480	-5.22%	13,218	-6.22%	-2.07%
Stirling	13,843	0.78%	14,437	1.51%	14,687	4.21%	6.10%
Vasse	12,788	-6.90%	14,066	-1.10%	14,308	1.52%	11.89%
Wagin	13,699	-0.27%	13,589	-4.46%	13,296	-5.66%	-2.94%
Warren-Blackwood	15,335	11.64%	15,658	10.09%	15,665	11.15%	2.15%
Total	315,927		327,124		324,157		2.61%
	Quotient	13,736	Quotient	14,223	Quotient	14,094	





Metropolitan Enrolment

Electors 11.2.2002	Quotient	Electors 26.2.2005	Quotient	Electors 31.12.2006	Quotient	% change in enrolment 11.2.2002 to 31.12.2006
899,450	26,454	937,528	27,574	933,372	27,452	3.77%
Quotient:		Quotient:		Quotient:		
(-15%)	22,486	(-15%)	23,438	(-15%)	23,334	
(+15%)	30,423	(+15%)	31,711	(+15%)	31,570	

The quotient for the metropolitan area is determined by dividing the total enrolment (number of electors) for that area by the number of districts (34) in that area.

Country Enrolment

Electors 11.2.2002	Quotient	Electors 26.2.2005	Quotient	Electors 31.12.2006	Quotient	% change in enrolment 11.2.2002 to 31.12.2006
315,927	13,736	327,124	14,223	324,157	14,094	2.61%
Quotient:		Quotient:		Quotient:		
(-15%)	11,676	(-15%)	12,089	(-15%)	11,980	
(+15%)	15,796	(+15%)	16,356	(+15%)	16,208	

The quotient for the country area is determined by dividing the total enrolment (number of electors) for that area by the number of districts (23) in that area.

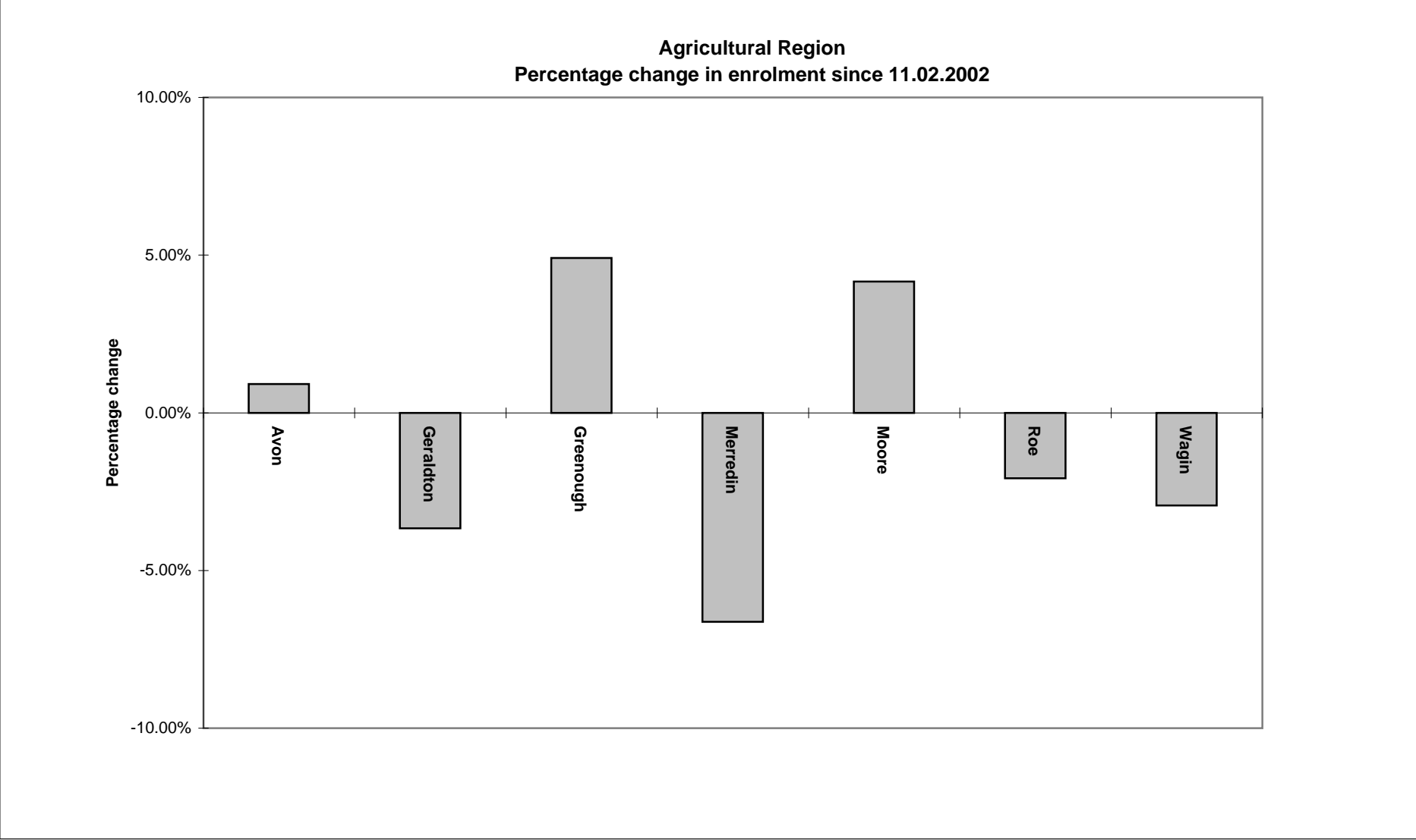
Legislative Council

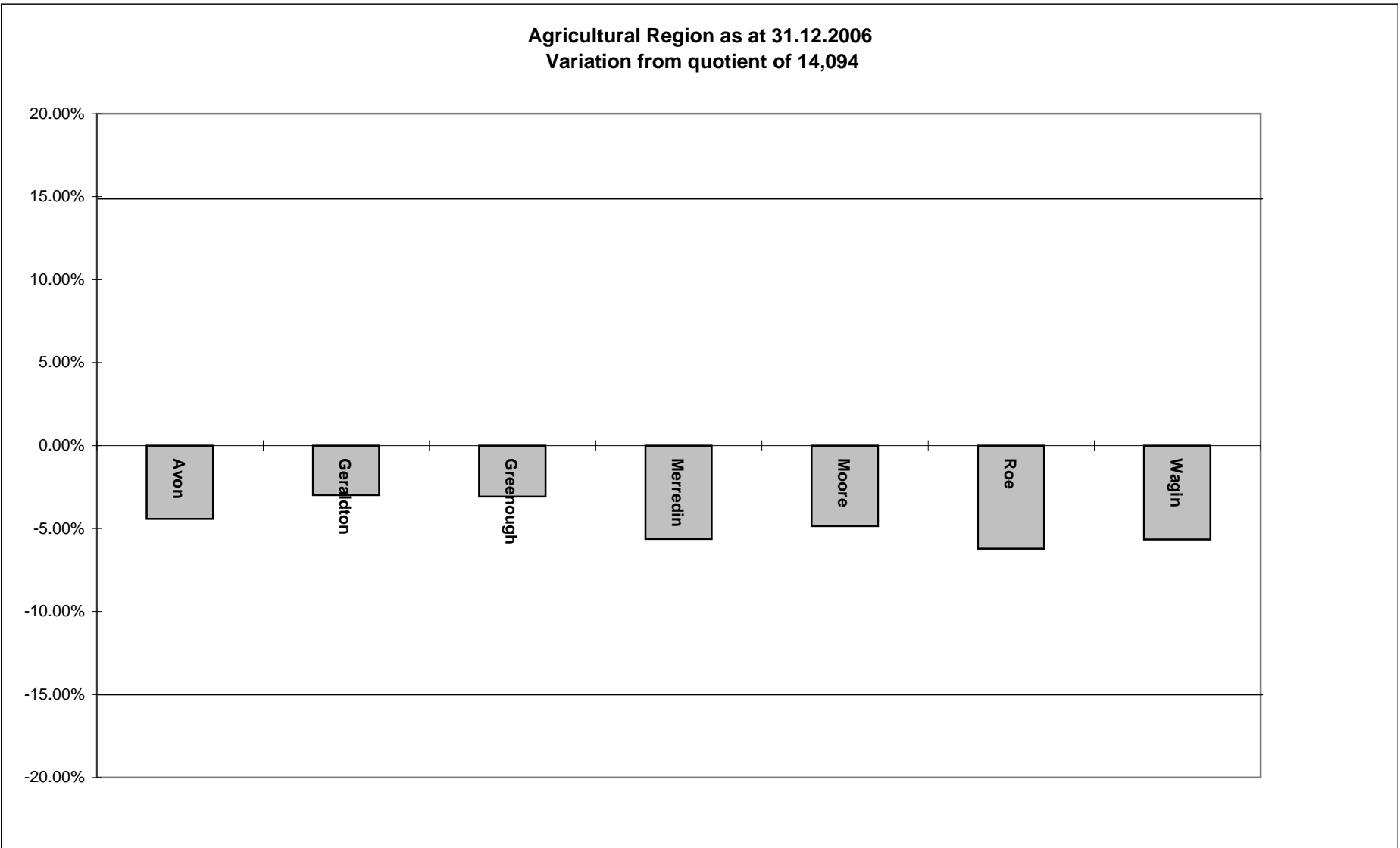
Regional Enrolment

Region	Enrolment 11.02.2002	Enrolment 26.02.2005	Enrolment 31.12.2006
East Metropolitan	261,662	274,680	275,452
North Metropolitan	374,168	390,628	389,675
South Metropolitan	263,620	272,220	268,245
Agricultural	94,877	95,433	94,027
Mining and Pastoral	68,556	68,399	64,605
South West	152,494	163,292	165,525
Total	1,215,377	1,264,652	1,257,529

Agricultural Region

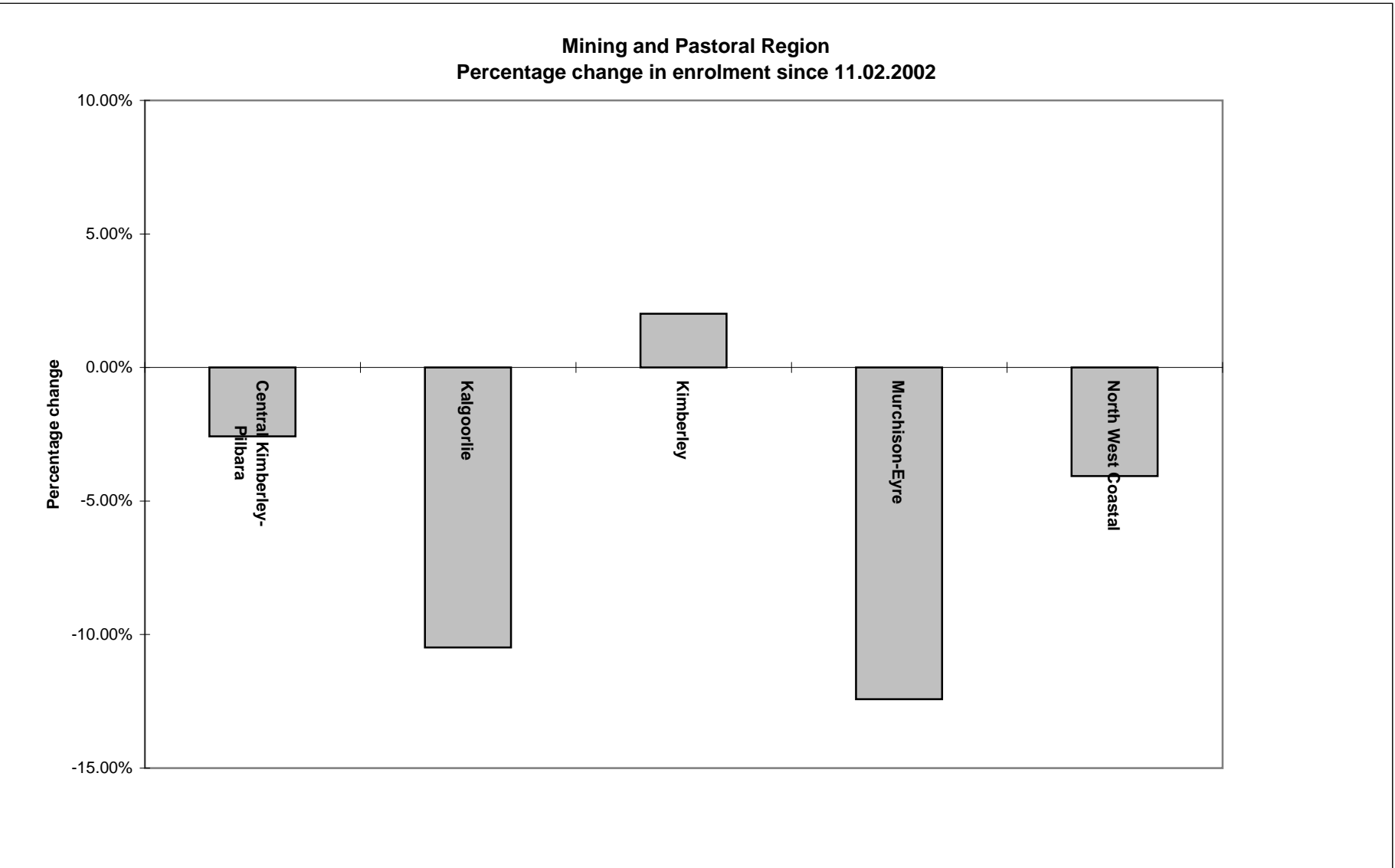
District	Enrolment 11.2.2002	Variation from Country Quotient of 11.2.2002	Enrolment 26.2.2005	Variation from Country Quotient of 26.2.2005	Enrolment 31.12.2006	Variation from Country Quotient of 31.12.2006	% change in enrolment 11.2.2002 to 31.12.2006
Avon	13,349	-2.82%	13,543	-4.78%	13,471	-4.42%	0.91%
Geraldton	14,193	3.33%	14,212	-0.08%	13,673	-2.99%	-3.66%
Greenough	13,021	-5.20%	13,467	-5.31%	13,660	-3.08%	4.91%
Merredin	14,244	3.70%	13,826	-2.79%	13,300	-5.63%	-6.63%
Moore	12,873	-6.28%	13,316	-6.38%	13,409	-4.86%	4.16%
Roe	13,498	-1.73%	13,480	-5.22%	13,218	-6.22%	-2.07%
Wagin	13,699	-0.27%	13,589	-4.46%	13,296	-5.66%	-2.94%
Total	94,877		95,433		94,027		-0.90%
	Quotient	13,736	Quotient	14,223	Quotient	14,094	

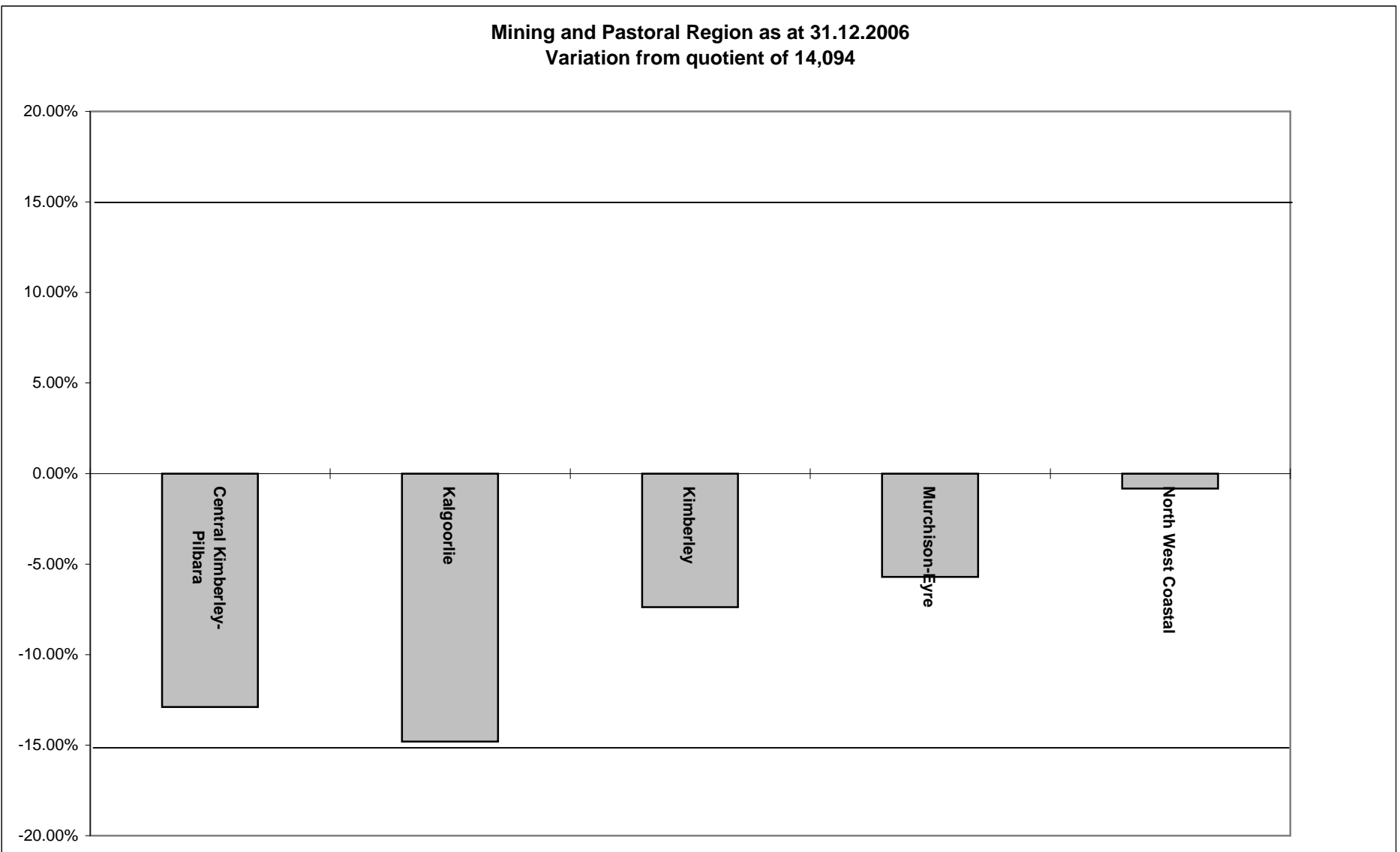




Mining and Pastoral Region

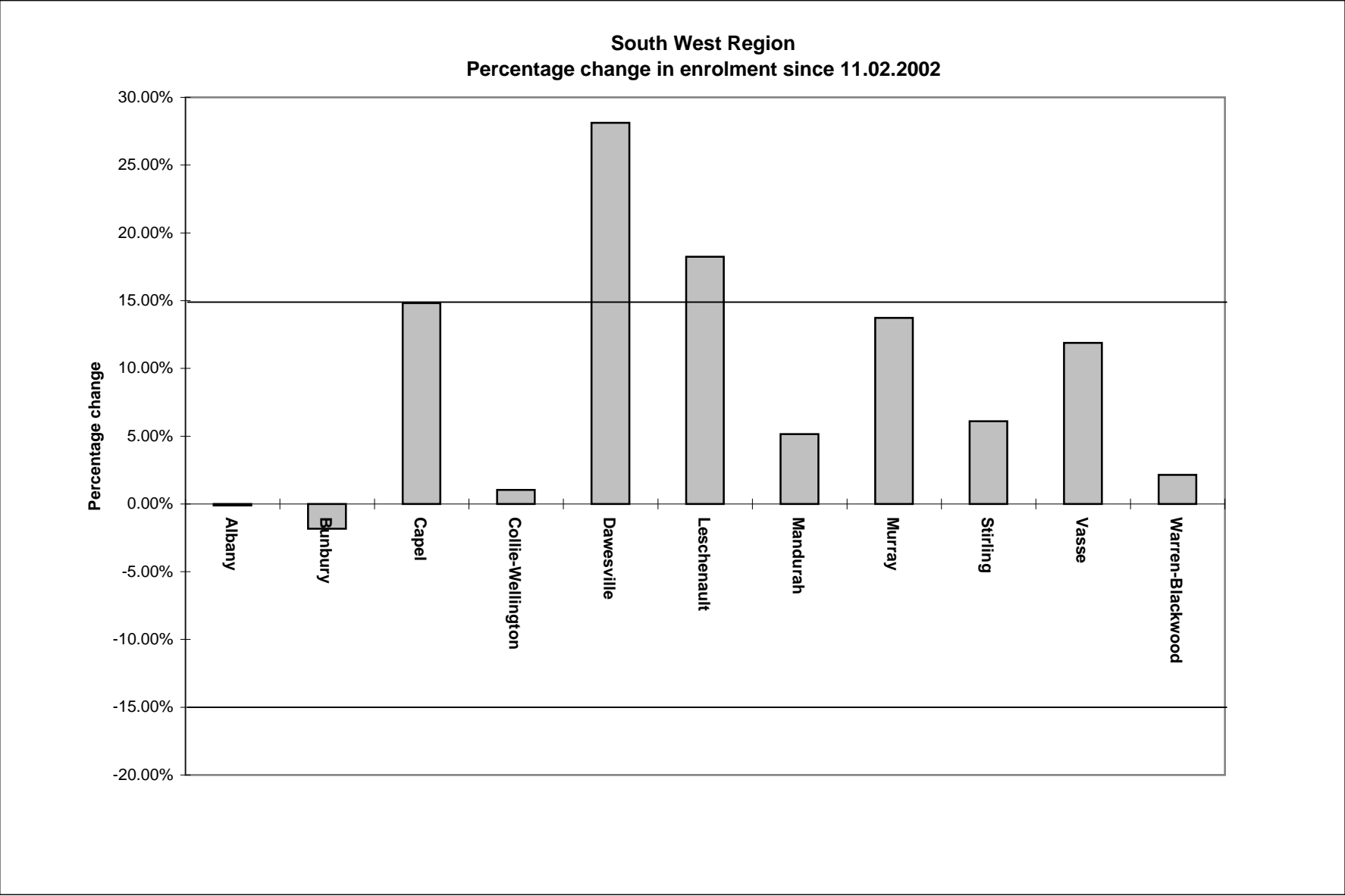
District	Enrolment 11.2.2002	Variation from Country Quotient of 11.2.2002	Enrolment 26.2.2005	Variation from Country Quotient of 26.2.2005	Enrolment 31.12.2006	Variation from Country Quotient of 31.12.2006	% change in enrolment 11.2.2002 to 31.12.2006
Central Kimberley-Pilbara	12,601	-8.26%	13,403	-5.76%	12,276	-12.90%	-2.58%
Kalgoorlie	13,414	-2.34%	12,873	-9.49%	12,008	-14.80%	-10.48%
Kimberley	12,797	-6.84%	13,147	-7.56%	13,054	-7.38%	2.01%
Murchison-Eyre	15,174	10.47%	14,406	1.29%	13,289	-5.71%	-12.42%
North West Coastal	14,570	6.07%	14,570	2.44%	13,978	-0.82%	-4.06%
Total	68,556		68,399		64,605		-5.76%
	Quotient	13,736	Quotient	14,223	Quotient	14,094	

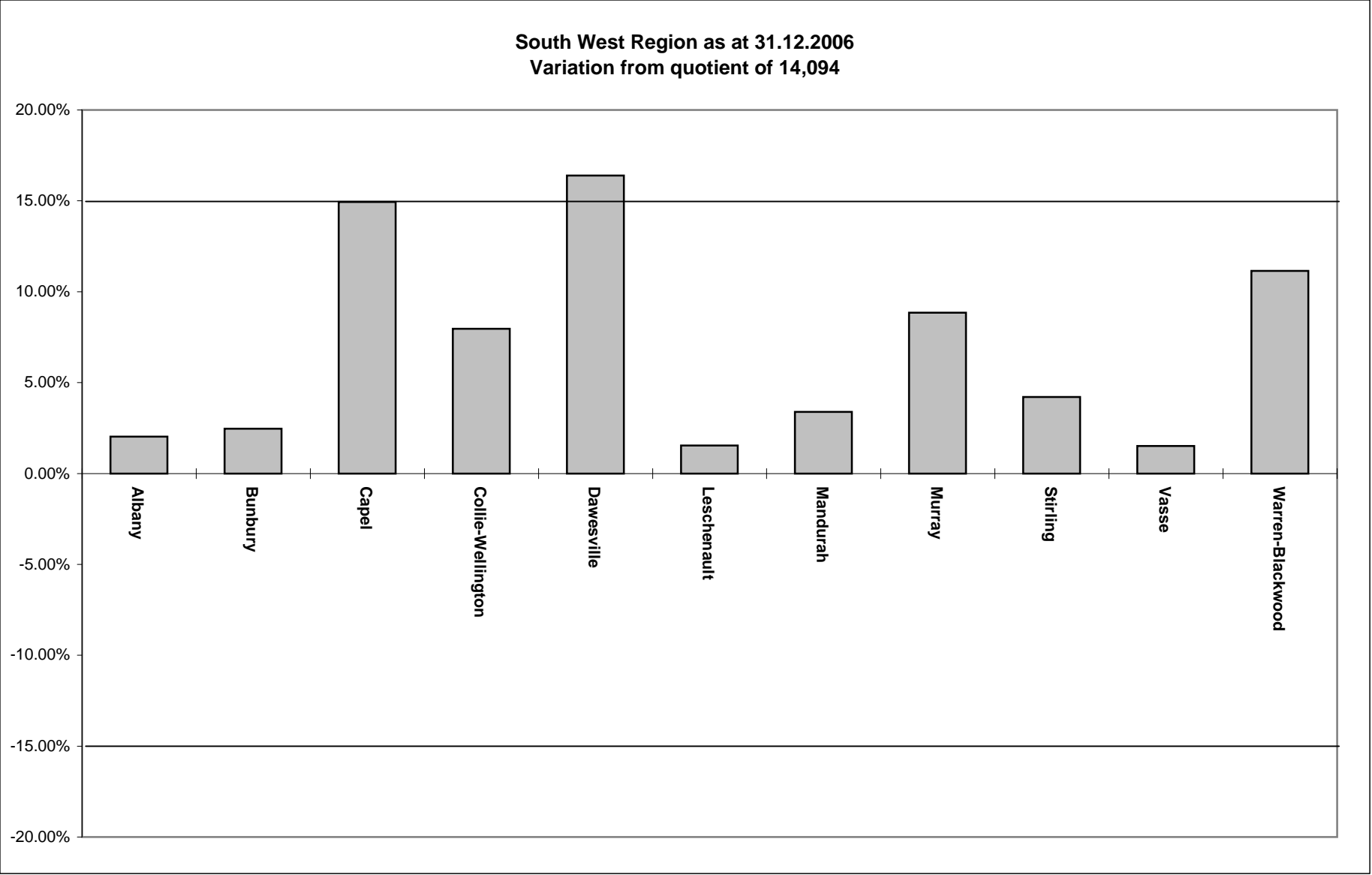




South West Region

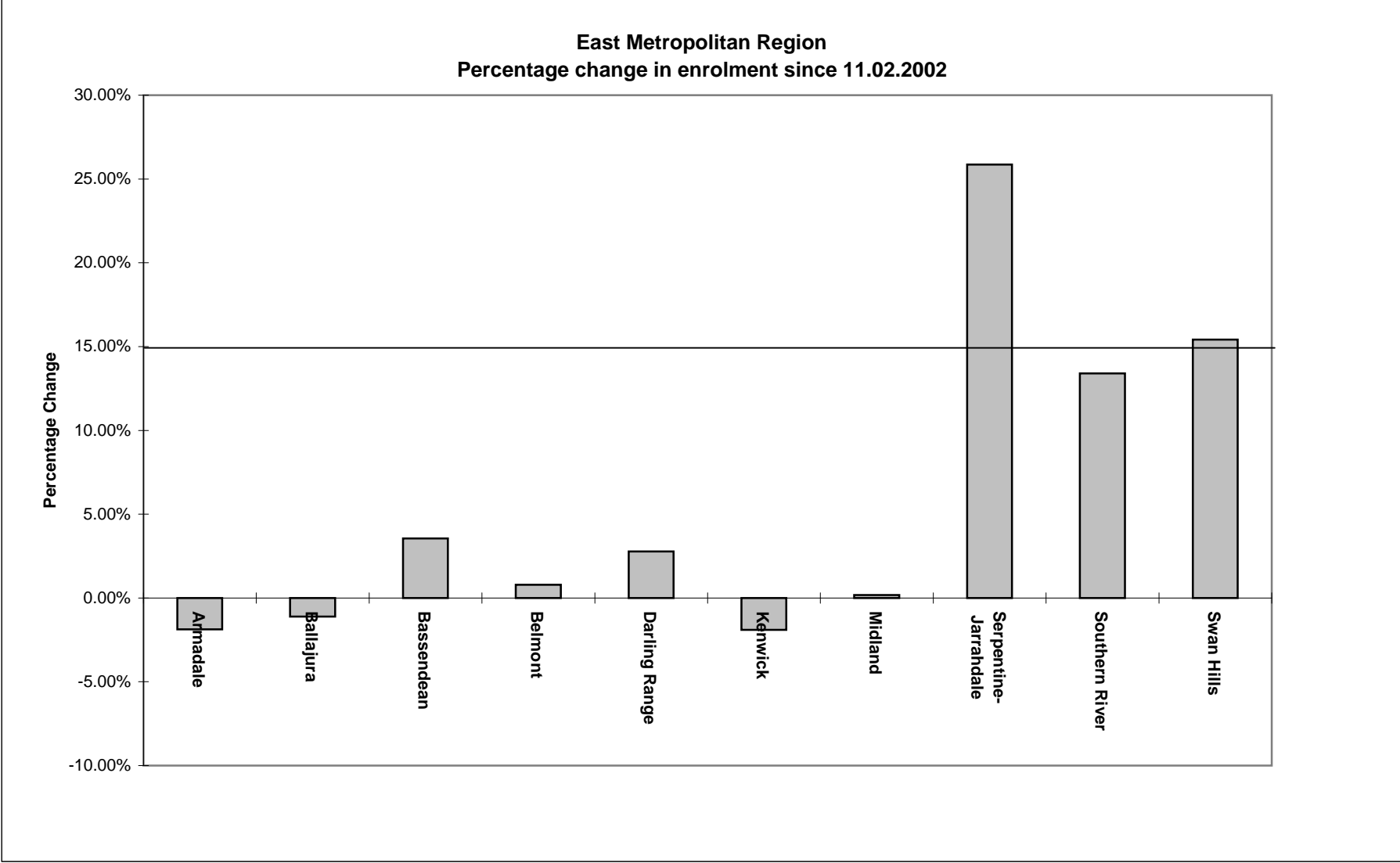
District	Enrolment 11.2.2002	Variation from Country Quotient of 11.2.2002	Enrolment 26.2.2005	Variation from Country Quotient of 26.2.2005	Enrolment 31.12.2006	Variation from Country Quotient of 31.12.2006	% change in enrolment 11.2.2002 to 31.12.2006
Albany	14,396	4.81%	14,654	3.03%	14,379	2.02%	-0.12%
Bunbury	14,709	7.08%	14,770	3.85%	14,441	2.46%	-1.82%
Capel	14,110	2.72%	15,670	10.18%	16,200	14.94%	14.81%
Collie-Wellington	15,060	9.64%	15,430	8.49%	15,217	7.97%	1.04%
Dawesville	12,804	-6.78%	15,445	8.59%	16,405	16.40%	28.12%
Leschenault	12,104	-11.88%	13,710	-3.61%	14,311	1.54%	18.23%
Mandurah	13,857	0.88%	14,653	3.02%	14,572	3.39%	5.16%
Murray	13,488	-1.81%	14,799	4.05%	15,340	8.84%	13.73%
Stirling	13,843	0.78%	14,437	1.51%	14,687	4.21%	6.10%
Vasse	12,788	-6.90%	14,066	-1.10%	14,308	1.52%	11.89%
Warren-Blackwood	15,335	11.64%	15,658	10.09%	15,665	11.15%	2.15%
Total	152,494		163,292		165,525		8.55%
	Quotient	13,736	Quotient	14,223	Quotient	14,094	

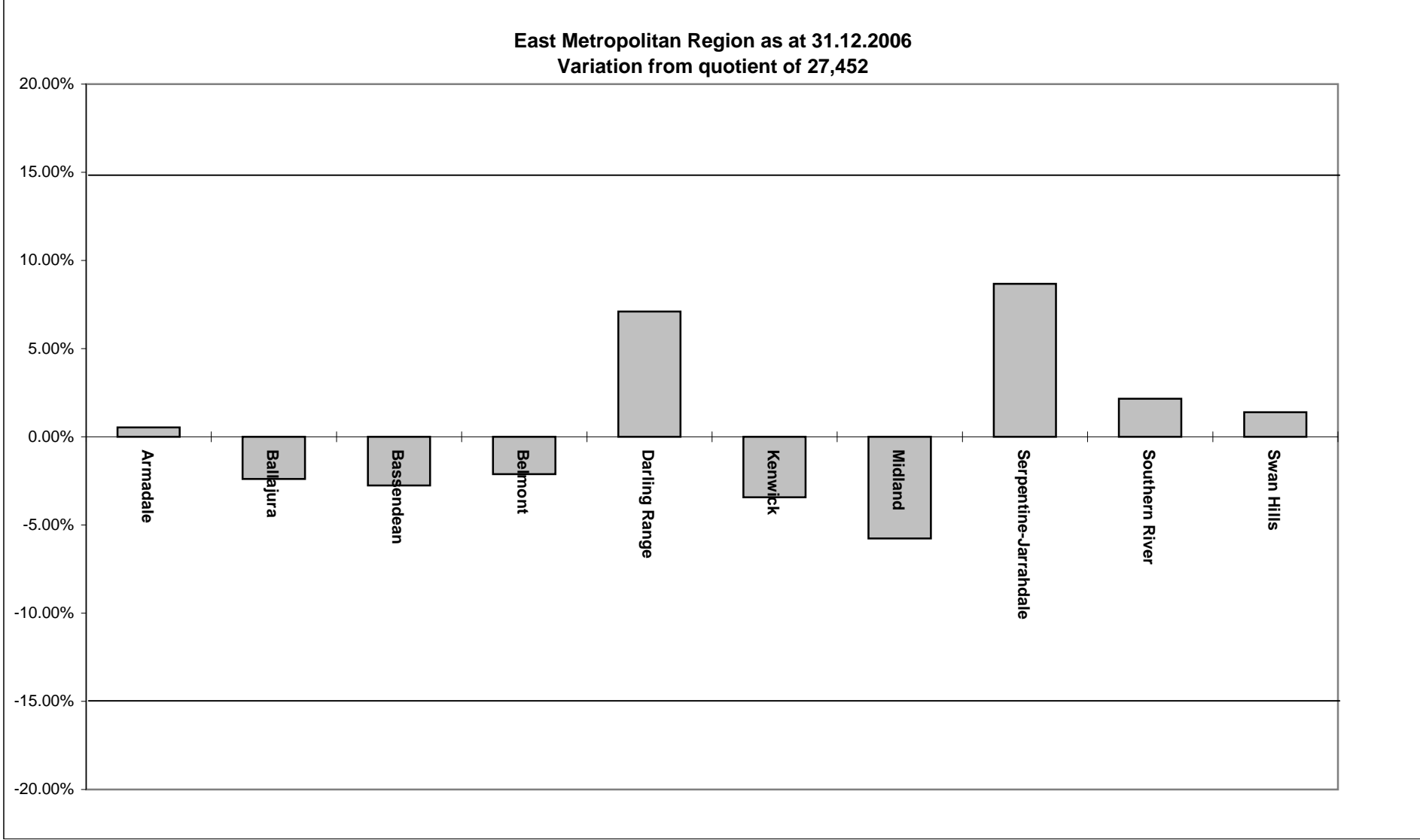




East Metropolitan Region

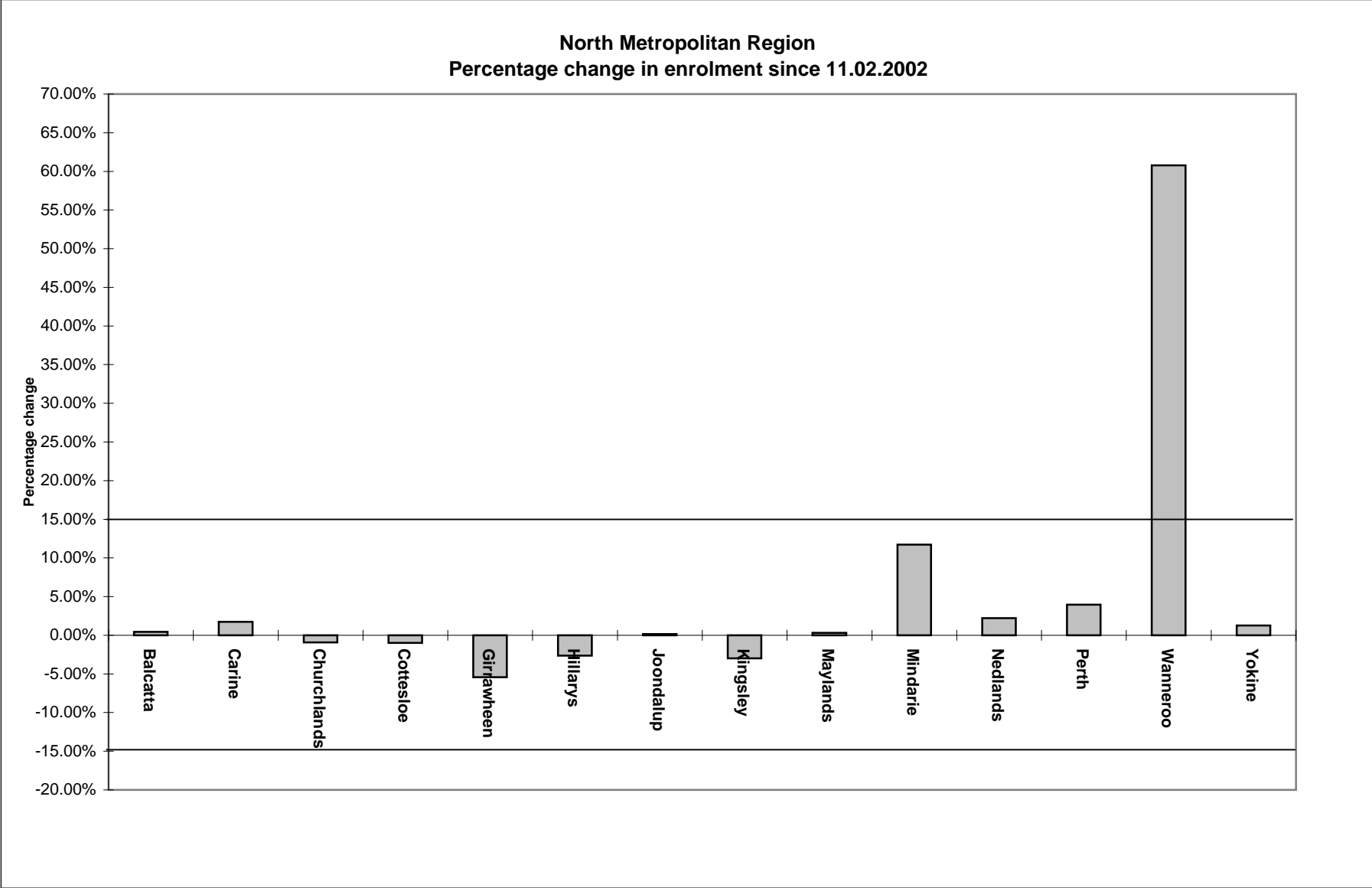
District	Enrolment 11.2.2002	Variation from Metropolitan Quotient of 11.2.2002	Enrolment 26.2.2005	Variation from Metropolitan Quotient of 26.2.2005	Enrolment 31.12.2006	Variation from Metropolitan Quotient of 31.12.2006	% change in enrolment 11.2.2002 to 31.12.2006
Armadale	28,125	6.31%	28,225	2.36%	27,599	0.54%	-1.87%
Ballajura	27,095	2.42%	27,171	-1.46%	26,796	-2.39%	-1.10%
Bassendean	25,780	-2.55%	26,886	-2.50%	26,694	-2.76%	3.55%
Belmont	26,657	0.77%	27,059	-1.87%	26,869	-2.12%	0.80%
Darling Range	28,609	8.14%	29,549	7.16%	29,401	7.10%	2.77%
Kenwick	27,022	2.15%	27,287	-1.04%	26,510	-3.43%	-1.89%
Midland	25,823	-2.39%	26,366	-4.38%	25,870	-5.76%	0.18%
Serpentine-Jarrahdale	23,702	-10.40%	28,050	1.72%	29,832	8.67%	25.86%
Southern River	24,732	-6.51%	26,990	-2.12%	28,046	2.16%	13.40%
Swan Hills	24,117	-8.84%	27,097	-1.73%	27,835	1.40%	15.42%
Total	261,662		274,680		275,452		5.27%
	Quotient	26,454	Quotient	27,574	Quotient	27,452	

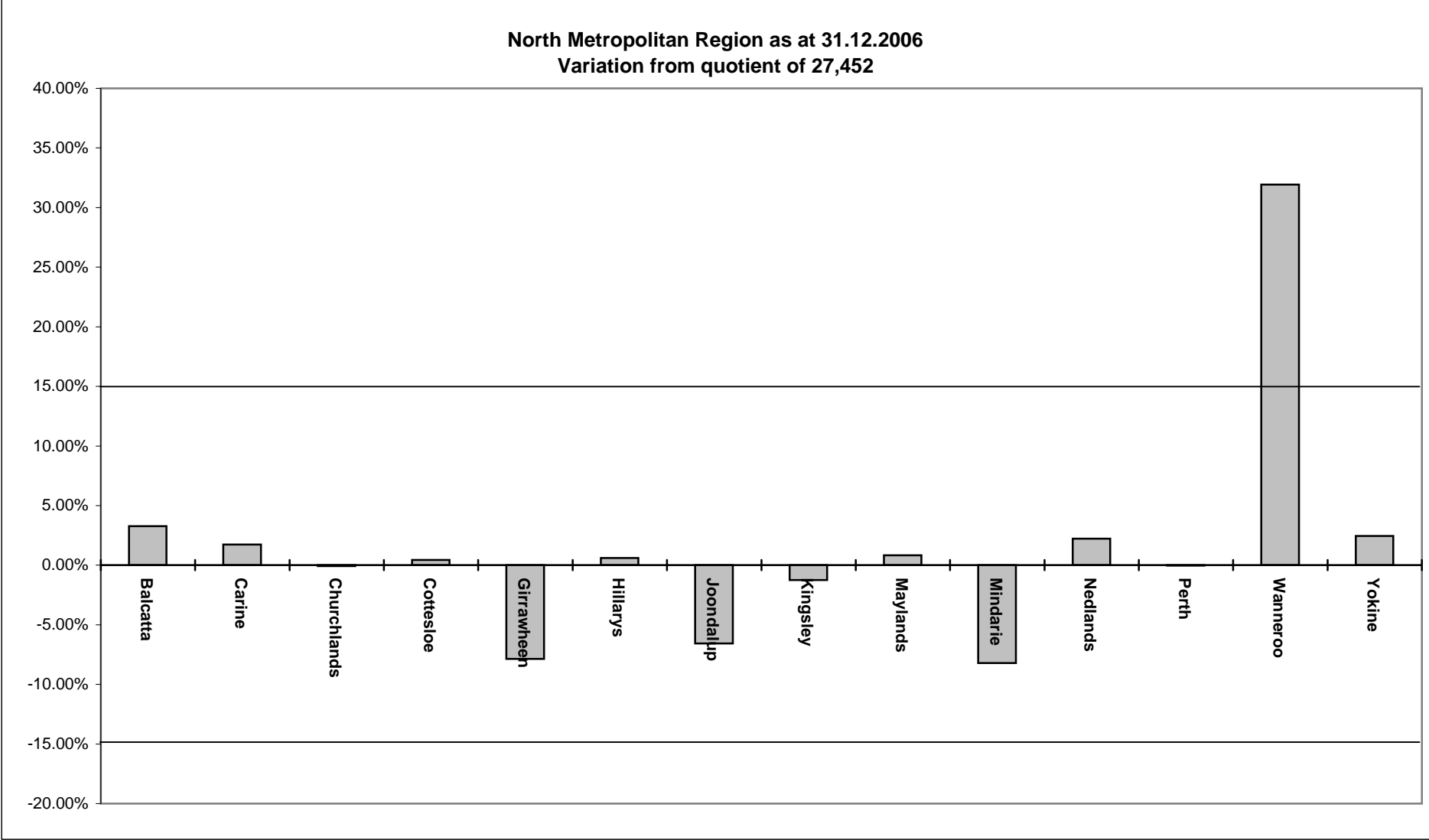




North Metropolitan Region

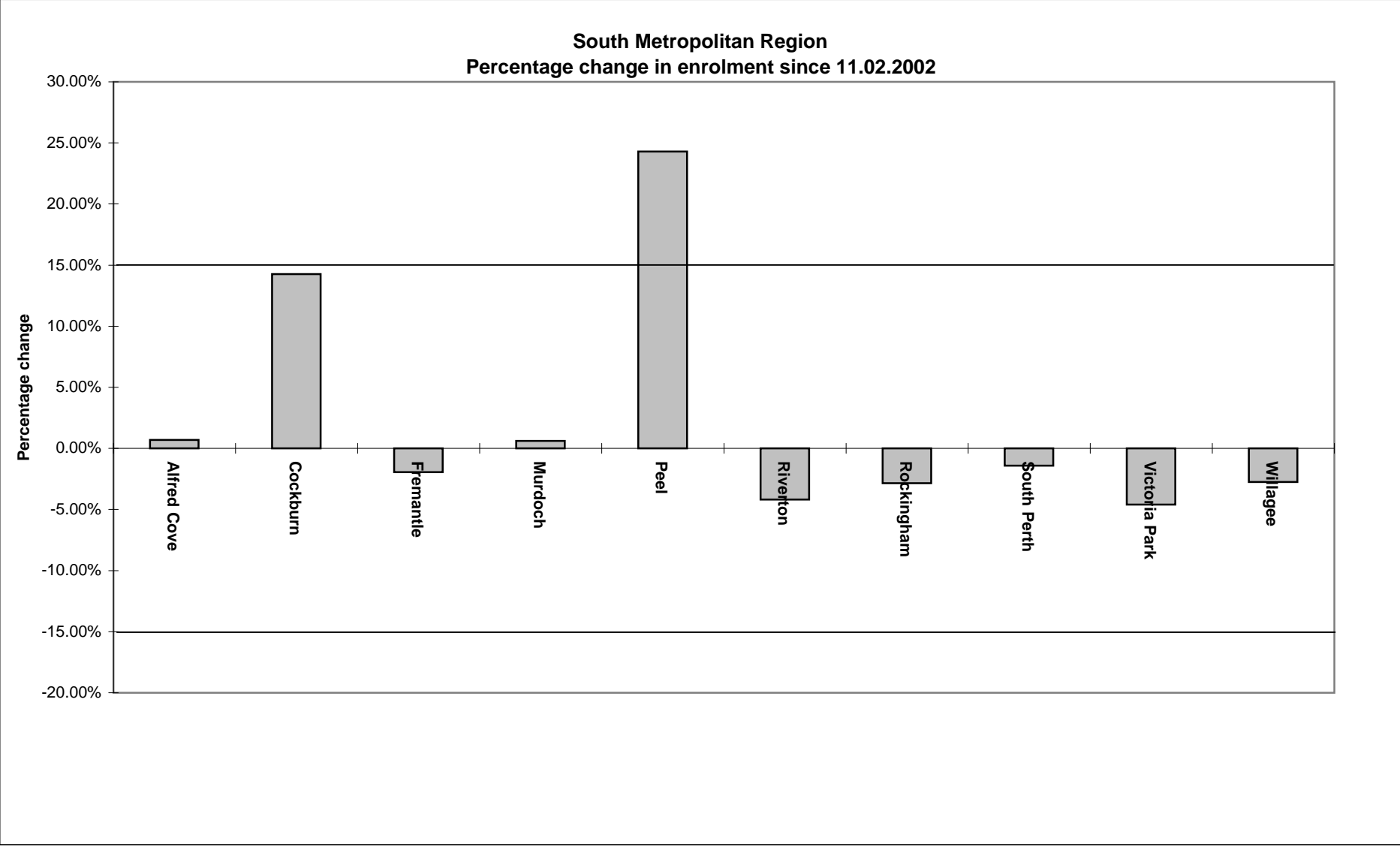
District	Enrolment 11.2.2002	Variation from Metropolitan Quotient of 11.2.2002	Enrolment 26.2.2005	Variation from Metropolitan Quotient of 26.2.2005	Enrolment 31.12.2006	Variation from Metropolitan Quotient of 31.12.2006	% change in enrolment 11.2.2002 to 31.12.2006
Balcatta	28,224	6.69%	28,517	3.42%	28,349	3.27%	0.44%
Carine	27,453	3.77%	28,207	2.29%	27,930	1.74%	1.74%
Churchlands	27,686	4.66%	28,001	1.55%	27,433	-0.07%	-0.91%
Cottesloe	27,845	5.26%	28,031	1.66%	27,570	0.43%	-0.99%
Girrawheen	26,741	1.08%	26,136	-5.22%	25,292	-7.87%	-5.42%
Hillarys	28,364	7.22%	28,593	3.69%	27,617	0.60%	-2.63%
Joondalup	25,607	-3.20%	26,177	-5.07%	25,649	-6.57%	0.16%
Kingsley	27,949	5.65%	28,079	1.83%	27,112	-1.24%	-2.99%
Maylands	27,591	4.30%	27,987	1.50%	27,681	0.83%	0.33%
Mindarie	22,555	-14.74%	24,723	-10.34%	25,196	-8.22%	11.71%
Nedlands	27,453	3.77%	28,692	4.05%	28,064	2.23%	2.23%
Perth	26,399	-0.21%	27,727	0.55%	27,440	-0.04%	3.94%
Wanneroo	22,525	-14.85%	31,521	14.31%	36,218	31.93%	60.79%
Yokine	27,776	5.00%	28,237	2.40%	28,124	2.45%	1.25%
Total	374,168		390,628		389,675		4.14%
	Quotient	26,454	Quotient	27,574	Quotient	27,452	

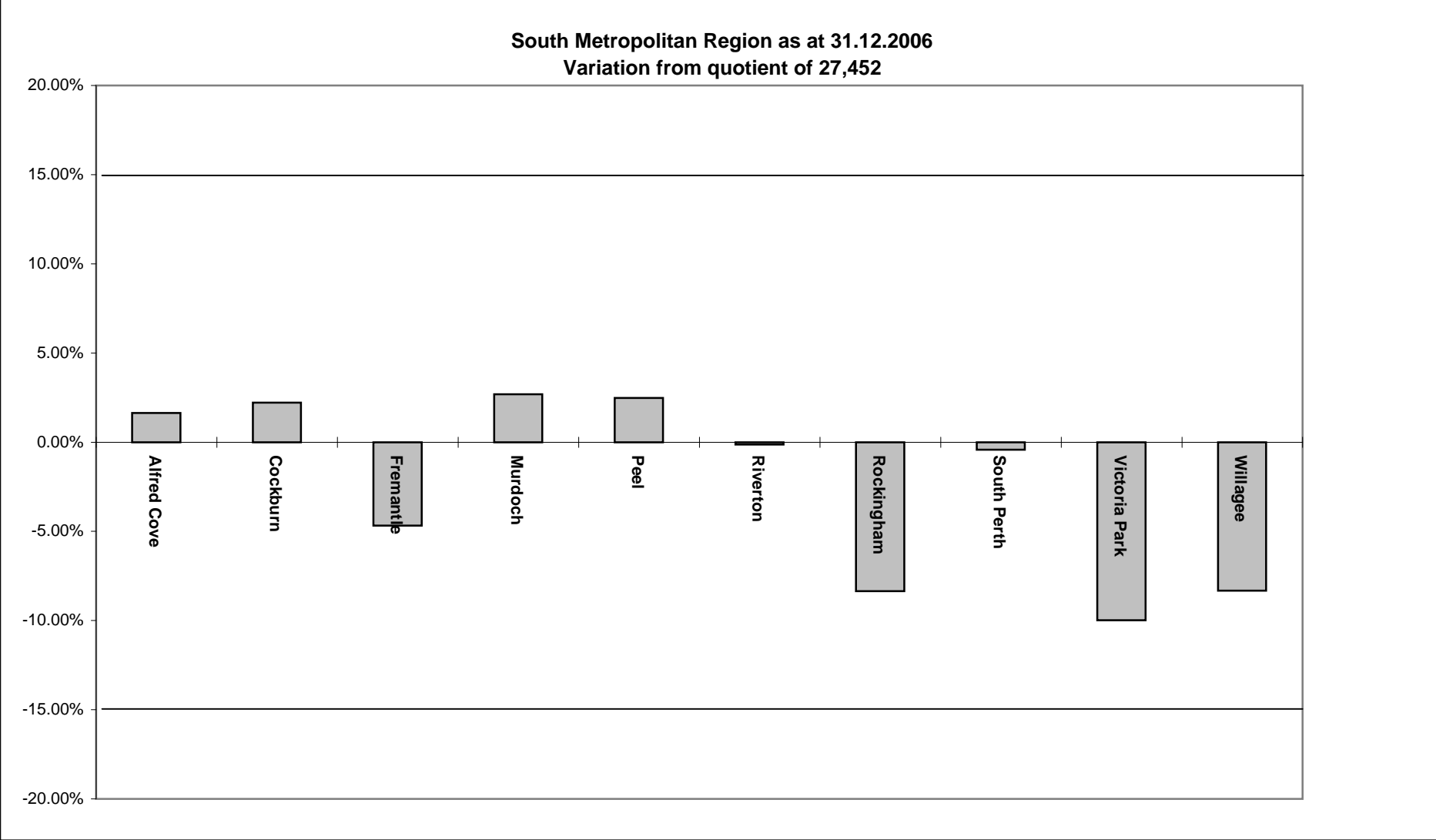




South Metropolitan Region

District	Enrolment 11.2.2002	Variation from Metropolitan Quotient of 11.02.2002	Enrolment 26.2.2005	Variation from Metropolitan Quotient of 26.2.2005	Enrolment 31.12.2006	Variation from Metropolitan Quotient of 31.12.2006	% change in enrolment 11.2.2002 to 31.12.2006
Alfred Cove	27,708	4.74%	28,143	2.06%	27,901	1.64%	0.70%
Cockburn	24,556	-7.18%	27,257	-1.15%	28,061	2.22%	14.27%
Fremantle	26,689	0.89%	26,742	-3.02%	26,169	-4.67%	-1.95%
Murdoch	28,015	5.90%	28,553	3.55%	28,189	2.68%	0.62%
Peel	22,633	-14.45%	26,873	-2.54%	28,132	2.48%	24.30%
Riverton	28,614	8.16%	28,412	3.04%	27,417	-0.13%	-4.18%
Rockingham	25,895	-2.11%	26,192	-5.01%	25,160	-8.35%	-2.84%
South Perth	27,725	4.80%	28,194	2.25%	27,336	-0.42%	-1.40%
Victoria Park	25,903	-2.08%	26,209	-4.95%	24,712	-9.98%	-4.60%
Willagee	25,882	-2.16%	25,645	-7.00%	25,168	-8.32%	-2.76%
Total	263,620		272,220		268,245		1.75%
	Quotient	26,454	Quotient	27,574	Quotient	27,452	





Range of Enrolments

Area	11.2.2002		26.2.2005		31.12.2006	
	Highest	Lowest	Highest	Lowest	Highest	Lowest
Metropolitan	Riverton 28,614	Wanneroo 22,525	Wanneroo 31,521	Mindarie 24,723	Wanneroo 36,218	Victoria Park 24,712
Country	Warren-Blackwood 15,335	Leschenault 12,104	Capel 15,670	Kalgoorlie 12,873	Dawesville 16,405	Kalgoorlie 12,008