



WESTERN AUSTRALIAN Electoral Commission

ELECTORAL ENROLMENT STATISTICS

**13 July 2004
(New Boundaries)**

On 4 August 2003, the Electoral Distribution Commissioners published their determination, pursuant to the *Electoral Distribution Act 1947*, of the electoral boundaries, which will apply under that legislation to the next State general election due in late 2004 or early 2005.

This publication is the first statistical report based on the new boundaries and contains elector statistics as at the 13 July 2004.

Included in this report are enrolment figures for each electoral district as at 11 February 2002. Enrolment figures taken at that date were used to calculate the quotients on which the distribution of electoral boundaries for the 2003 division of the State was based.

A handwritten signature in black ink that reads "Warwick Gately".

Warwick Gately AM
ACTING ELECTORAL COMMISSIONER

3 August 2004

Contact Details:

Western Australian Electoral Commission
Level 2, 111 St Georges Terrace
PERTH WA 6000

Postal Address:
GPO Box F316
PERTH WA 6841

Phone: (08) 9214 0400 or 13 63 06 (WA callers only)
Facsimile: (08) 9226 0577
Internet: www.waec.wa.gov.au
Email: waec@waec.wa.gov.au

Contents	Page No.
State Enrolment	3
Monthly Metropolitan and Country Enrolments and Quotients from July 1998 to July 2004	4
Metropolitan Area Enrolment Statistics	5
Country Area Enrolment Statistics	8
Metropolitan and Country Enrolments and Quotients as at 11.2.2002 and 13.7.2004	11
Legislative Council Regional Enrolments as at 11.2.2002 and 13.7.2004	11
Regional Enrolments and Quotient by Districts as at 11.2.2002 and 13.7.2004	12
Range of Enrolments as at 11.2.2002 and 13.7.2004	30

STATE ENROLMENT

22 November 1996	1,119,992	Increase from 1993 to November 1996 is 103,242 or 10.15%	Close of roll for the 14 December 1996 State General Election.
18 January 2001	1,193,508	Increase from November 1996 to 18 January 2001 is 73,516 or 6.56%	Close of roll for the 10 February 2001 State General Election
11 February 2002	1,215,377	Increase from January 2001 to 11 February 2002 is 21,869 or 1.83%	Relevant date under section 2A (5) of the <i>Electoral Distribution Act 1947</i> for the determination of quotients for the 2003 division of the State.
13 July 2004	1,223,007	Increase from 11 February 2002 to 13 July 2004 is 7,630 or .63%	

Monthly Enrolments and Quotients

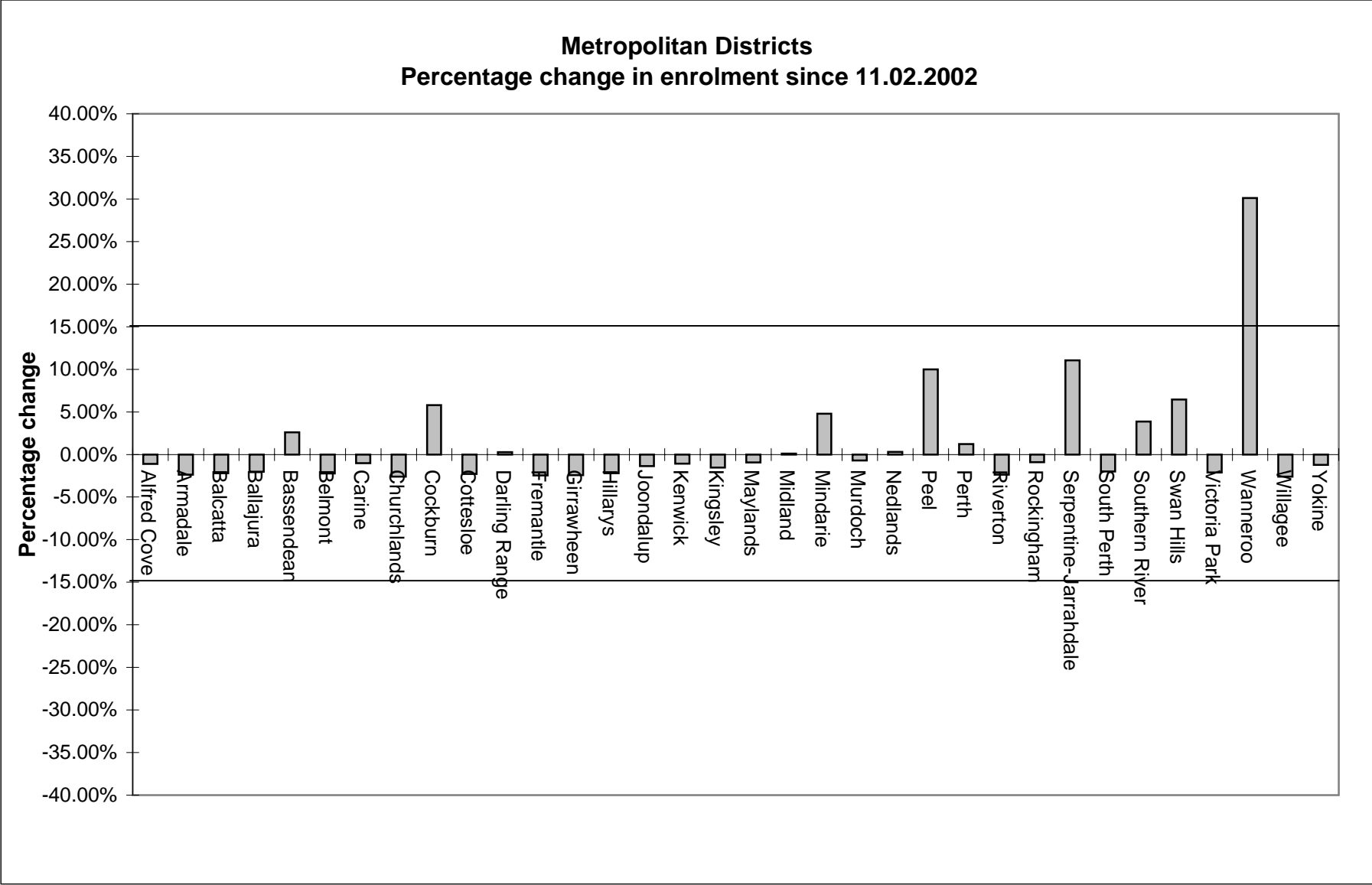
Year	Month	Metropolitan Enrolment	Metropolitan Quotient	Country Enrolment	Country Quotient	Total Enrolment
1998	July	832,848	24,496	292,138	12,702	1,124,986
	August	832,254	24,478	292,475	12,716	1,124,729
	September	847,990	24,941	298,062	12,959	1,146,052
	October	855,978	25,176	299,894	13,039	1,155,872
	November	860,979	25,323	302,903	13,170	1,163,882
	December	861,682	25,344	303,807	13,209	1,165,489
1999	January	860,481	25,308	302,976	13,173	1,163,457
	February	856,579	25,194	300,323	13,058	1,156,902
	March	857,731	25,227	300,570	13,068	1,158,301
	April	858,001	25,235	300,713	13,074	1,158,714
	May	857,877	25,232	300,928	13,084	1,158,805
	June	857,265	25,214	300,153	13,050	1,157,418
	July	860,418	25,306	291,352	12,667	1,151,770
	August	851,944	25,057	299,240	13,010	1,151,184
	September	852,909	25,086	299,800	13,035	1,152,709
	October	868,183	25,535	304,287	13,230	1,172,470
	November	873,224	25,683	305,900	13,300	1,179,124
	December	876,994	25,794	307,380	13,364	1,184,374
2000	January	876,303	25,774	307,215	13,357	1,183,518
	February	876,418	25,777	307,578	13,373	1,183,996
	March	872,006	25,647	307,040	13,350	1,179,046
	April	872,350	25,657	307,084	13,351	1,179,434
	May	867,196	25,506	304,810	13,252	1,172,006
	June	865,058	25,443	304,614	13,244	1,169,672
	July	865,381	25,453	304,692	13,248	1,170,073
	August	864,188	25,417	304,456	13,237	1,168,644
	September	865,792	25,464	305,127	13,266	1,170,919
	October	869,341	25,569	305,981	13,303	1,175,322
	November	870,634	25,607	305,826	13,297	1,176,460
	December	872,645	25,666	306,293	13,317	1,178,938
2001	January	883,721	25,992	309,787	13,469	1,193,508
	February	888,690	26,138	311,181	13,530	1,199,871
	March	891,627	26,224	312,767	13,599	1,204,394
	April	891,014	26,206	312,448	13,585	1,203,462
	May	894,058	26,296	312,875	13,603	1,206,933
	June	893,829	26,289	312,907	13,605	1,206,736
	July	880,674	25,902	310,170	13,486	1,190,844
	August	882,124	25,945	310,573	13,503	1,192,697
	September	887,452	26,102	312,231	13,575	1,199,683
	October	907,690	26,697	299,321	13,014	1,207,011
	November	895,887	26,350	315,096	13,700	1,210,983
	December	901,859	26,525	317,120	13,789	1,218,979
2002	January	903,320	26,568	317,280	13,795	1,220,600
	February	902,507	26,544	316,840	13,776	1,219,347
	March	898,463	26,425	315,927	13,736	1,214,390
	April	897,458	26,396	315,462	13,716	1,212,920
	May	895,403	26,335	315,143	13,702	1,210,546
	June	892,013	26,236	314,712	13,683	1,206,725
	July	890,463	26,190	314,002	13,653	1,204,465
	August	890,930	26,204	314,291	13,665	1,205,221
	September	893,310	26,274	315,166	13,703	1,208,476
	October	894,850	26,319	316,022	13,740	1,210,872
	November	897,970	26,411	316,223	13,749	1,214,193
	December	899,158	26,446	316,385	13,756	1,215,543
2003	January	897,871	26,408	316,269	13,751	1,214,140
	February	892,743	26,257	315,421	13,714	1,208,164
	March	895,109	26,327	316,595	13,765	1,211,704
	April	895,715	26,345	316,352	13,754	1,212,067
	May	895,847	26,348	316,590	13,765	1,212,437
	June	893,961	26,293	315,972	13,738	1,209,933
	July	892,982	26,264	315,585	13,721	1,208,567
	August	885,429	26,042	313,501	13,630	1,198,930
	September	888,687	26,138	313,973	13,651	1,202,660
	October	892,350	26,246	314,894	13,691	1,207,244
	November	894,698	26,315	315,053	13,698	1,209,751
	December	895,856	26,349	315,401	13,713	1,211,257
2004	January	896,027	26,354	315,428	13,714	1,211,455
	February	895,206	26,330	314,875	13,690	1,210,081
	March	895,968	26,352	314,757	13,685	1,210,725
	April	899,119	26,445	314,817	13,688	1,213,936
	May	900,429	26,483	314,673	13,681	1,215,102
	June	904,740	26,610	315,622	13,723	1,220,362
	July	906,459	26,661	316,548	13,763	1,223,007

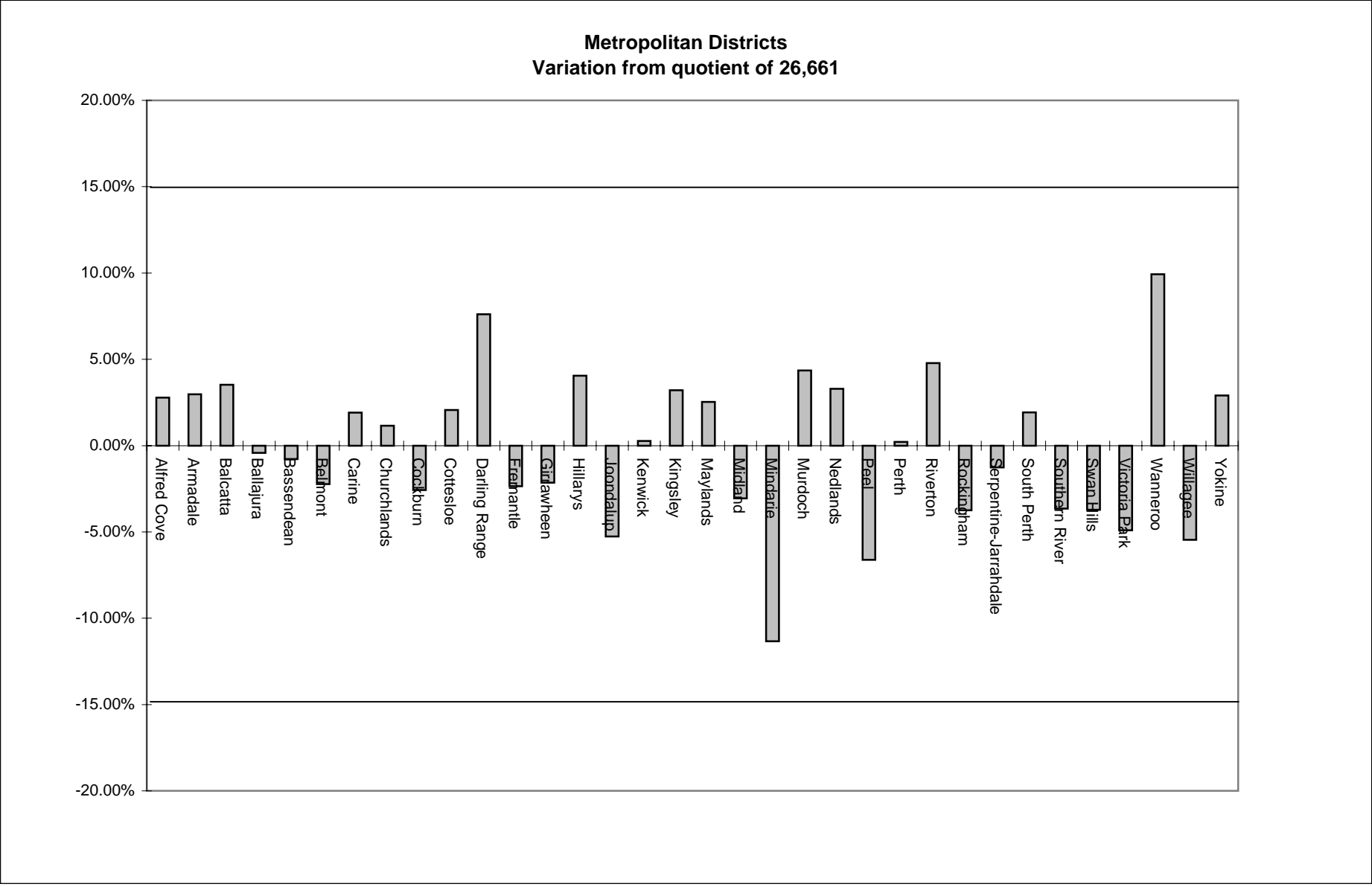
Note: The above quotient figures are determined by dividing the total enrolments (number of electors) for that area by the number of districts in that area (34 in the metropolitan area and 23 in the country area).

Legislative Assembly

Metropolitan Area Enrolment Statistics

District	Enrolment 11.2.2002	Variation from Quotient	Enrolment 13.7.2004	Variation from Quotient	% change in enrolment 11.2.2002 to 13.7.2004
Alfred Cove	27,708	4.74%	27,402	2.78%	-1.10%
Armadale	28,125	6.31%	27,455	2.98%	-2.38%
Balcatta	28,224	6.69%	27,602	3.53%	-2.20%
Ballajura	27,095	2.42%	26,547	-0.43%	-2.02%
Bassendean	25,780	-2.55%	26,453	-0.78%	2.61%
Belmont	26,657	0.77%	26,066	-2.23%	-2.22%
Carine	27,453	3.77%	27,171	1.91%	-1.03%
Churchlands	27,686	4.66%	26,968	1.15%	-2.59%
Cockburn	24,556	-7.18%	25,975	-2.57%	5.78%
Cottesloe	27,845	5.26%	27,211	2.06%	-2.28%
Darling Range	28,609	8.14%	28,691	7.62%	0.29%
Fremantle	26,689	0.89%	26,032	-2.36%	-2.46%
Girrawheen	26,741	1.08%	26,090	-2.14%	-2.43%
Hillarys	28,364	7.22%	27,741	4.05%	-2.20%
Joondalup	25,607	-3.20%	25,258	-5.26%	-1.36%
Kenwick	27,022	2.15%	26,734	0.28%	-1.07%
Kingsley	27,949	5.65%	27,516	3.21%	-1.55%
Maylands	27,591	4.30%	27,334	2.53%	-0.93%
Midland	25,823	-2.39%	25,846	-3.06%	0.09%
Mindarie	22,555	-14.74%	23,637	-11.34%	4.80%
Murdoch	28,015	5.90%	27,821	4.35%	-0.69%
Nedlands	27,453	3.77%	27,538	3.29%	0.31%
Peel	22,633	-14.45%	24,896	-6.62%	10.00%
Perth	26,399	-0.21%	26,718	0.22%	1.21%
Riverton	28,614	8.16%	27,935	4.78%	-2.37%
Rockingham	25,895	-2.11%	25,660	-3.75%	-0.91%
Serpentine-Jarrahdale	23,702	-10.40%	26,325	-1.26%	11.07%
South Perth	27,725	4.80%	27,175	1.93%	-1.98%
Southern River	24,732	-6.51%	25,689	-3.64%	3.87%
Swan Hills	24,117	-8.84%	25,670	-3.72%	6.44%
Victoria Park	25,903	-2.08%	25,352	-4.91%	-2.13%
Wanneroo	22,525	-14.85%	29,308	9.93%	30.11%
Willagee	25,882	-2.16%	25,207	-5.45%	-2.61%
Yokine	27,776	5.00%	27,436	2.91%	-1.22%
Total	899,450		906,459		0.78%
	Quotient	26,454	Quotient	26,661	

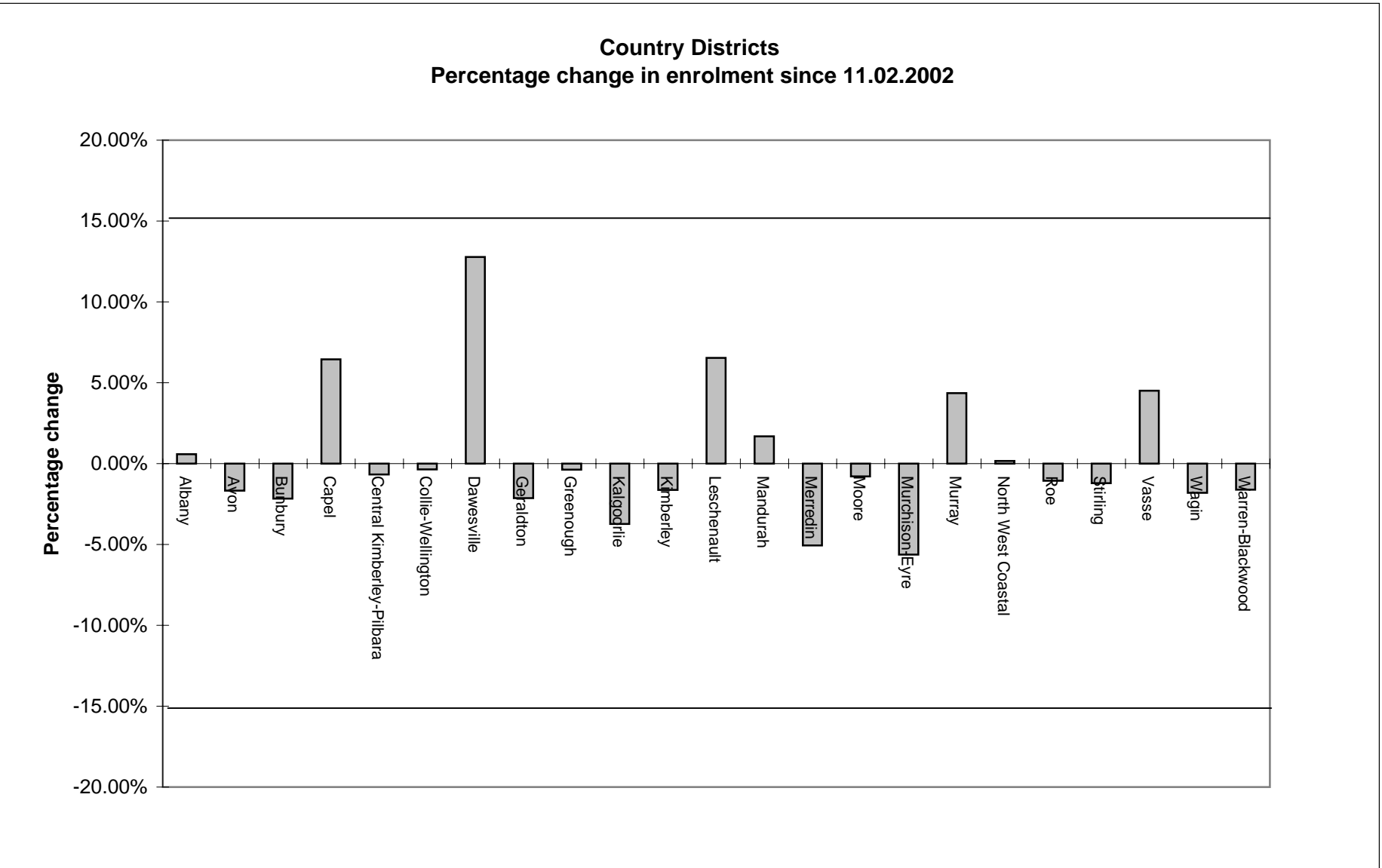


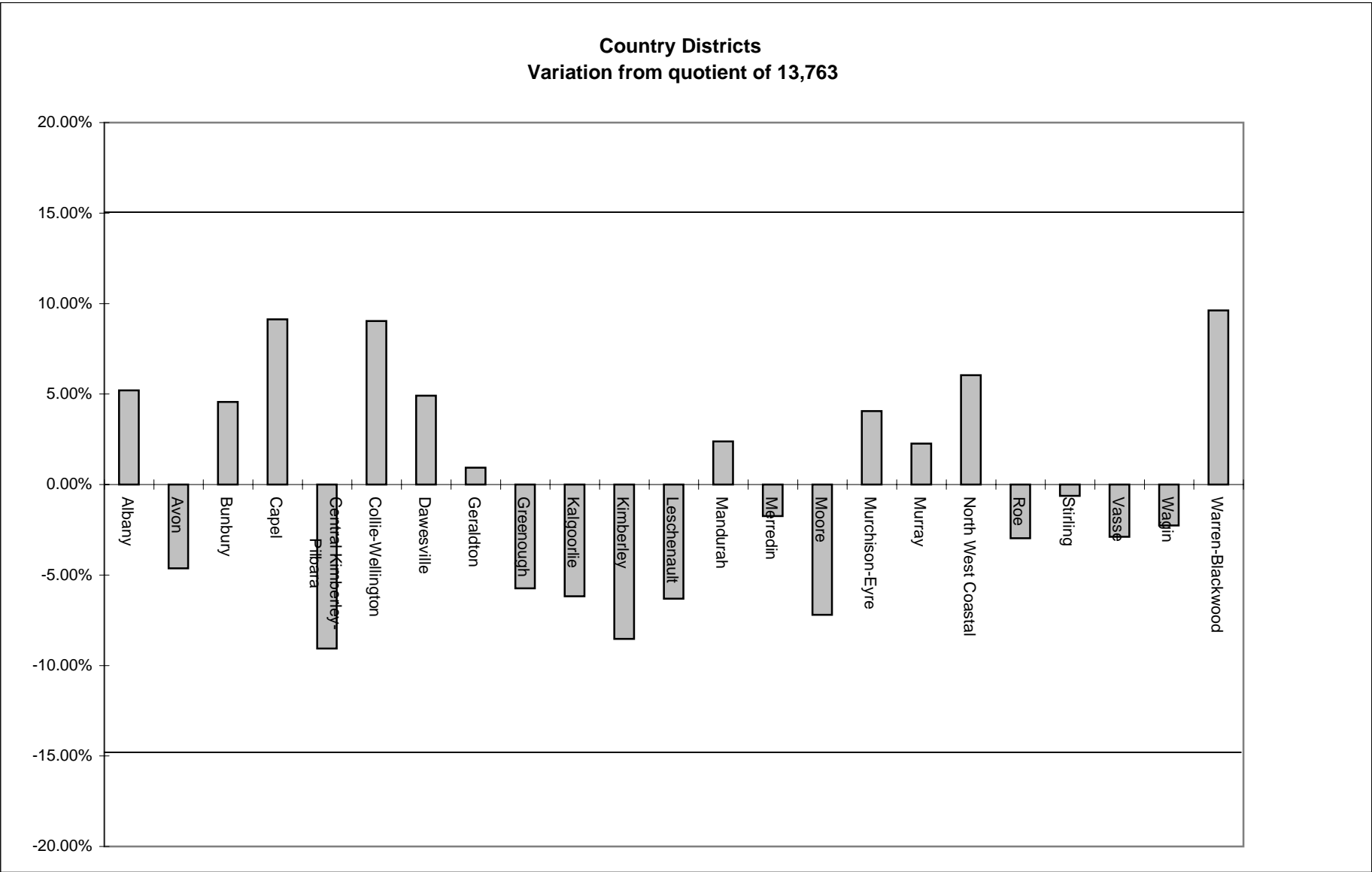


Legislative Assembly

Country Area Enrolment Statistics

District	Enrolment 11.2.2002	Variation from Quotient	Enrolment 13.7.2004	Variation from Quotient	% change in enrolment 11.2.2002 to 13.7.2004
Albany	14,396	4.81%	14,479	5.20%	0.58%
Avon	13,349	-2.82%	13,126	-4.63%	-1.67%
Bunbury	14,709	7.08%	14,391	4.56%	-2.16%
Capel	14,110	2.72%	15,020	9.13%	6.45%
Central Kimberley-Pilbara	12,601	-8.26%	12,516	-9.06%	-0.67%
Collie-Wellington	15,060	9.64%	15,006	9.03%	-0.36%
Dawesville	12,804	-6.78%	14,439	4.91%	12.77%
Geraldton	14,193	3.33%	13,891	0.93%	-2.13%
Greenough	13,021	-5.20%	12,973	-5.74%	-0.37%
Kalgoorlie	13,414	-2.34%	12,913	-6.18%	-3.73%
Kimberley	12,797	-6.84%	12,589	-8.53%	-1.63%
Leschenault	12,104	-11.88%	12,895	-6.31%	6.54%
Mandurah	13,857	0.88%	14,091	2.38%	1.69%
Merredin	14,244	3.70%	13,523	-1.74%	-5.06%
Moore	12,873	-6.28%	12,772	-7.20%	-0.78%
Murchison-Eyre	15,174	10.47%	14,321	4.05%	-5.62%
Murray	13,488	-1.81%	14,075	2.27%	4.35%
North West Coastal	14,570	6.07%	14,595	6.05%	0.17%
Roe	13,498	-1.73%	13,354	-2.97%	-1.07%
Stirling	13,843	0.78%	13,676	-0.63%	-1.21%
Vasse	12,788	-6.90%	13,365	-2.89%	4.51%
Wagin	13,699	-0.27%	13,451	-2.27%	-1.81%
Warren-Blackwood	15,335	11.64%	15,087	9.62%	-1.62%
Total	315,927		316,548		0.20%
	Quotient	13,736	Quotient	13,763	





Metropolitan Enrolment

Electors 11.2.2002	Quotient	Electors 13.7.2004	Quotient	% change in enrolment 11.2.2002 to 13.7.2004
899,450	26,454	906,459	26,661	0.78%
Quotient:		Quotient:		
(-15%)	22,486	(-15%)	22,661	
(+15%)	30,423	(+15%)	30,660	

The quotient for the metropolitan area is determined by dividing the total enrolment (number of electors) for that area by the number of districts (34) in that area.

Country Enrolment

Electors 11.2.2002	Quotient	Electors 13.7.2004	Quotient	% change in enrolment 11.02.2002 to 13.7.2004
315,927	13,736	316,548	13,763	0.20%
Quotient:		Quotient:		
(-15%)	11,676	(-15%)	11,699	
(+15%)	15,796	(+15%)	15,827	

The quotient for the country area is determined by dividing the total enrolment (number of electors) for that area by the number of districts (23) in that area.

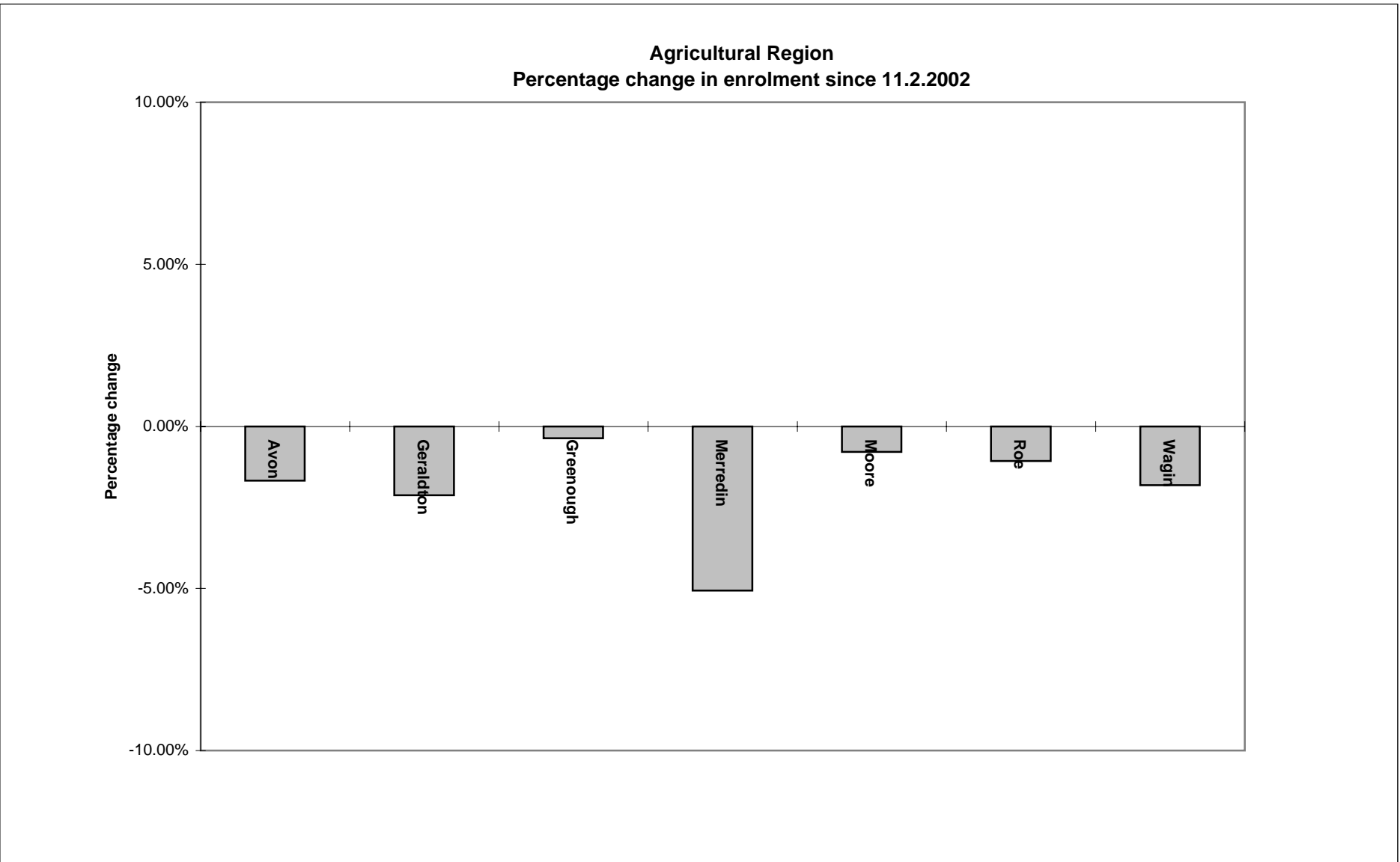
Legislative Council

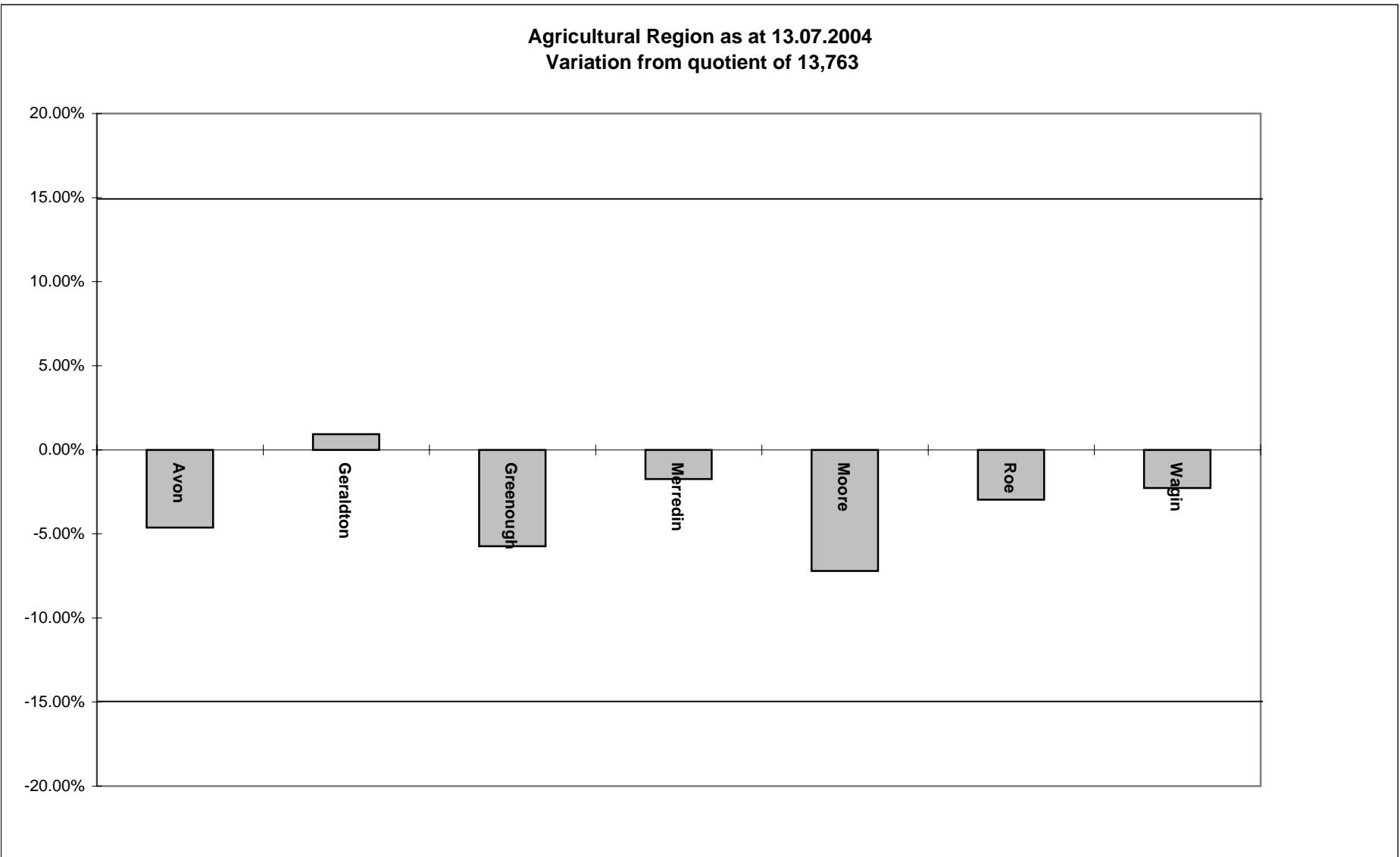
Regional Enrolment

Region	Enrolment 11.2.2002	Enrolment 13.7.2004
East Metropolitan	261,662	265,476
North Metropolitan	374,168	377,528
South Metropolitan	263,620	263,455
Agricultural	94,877	93,090
Mining and Pastoral	68,556	66,934
South West	152,494	156,524
Total	1,215,377	1,223,007

Agricultural Region

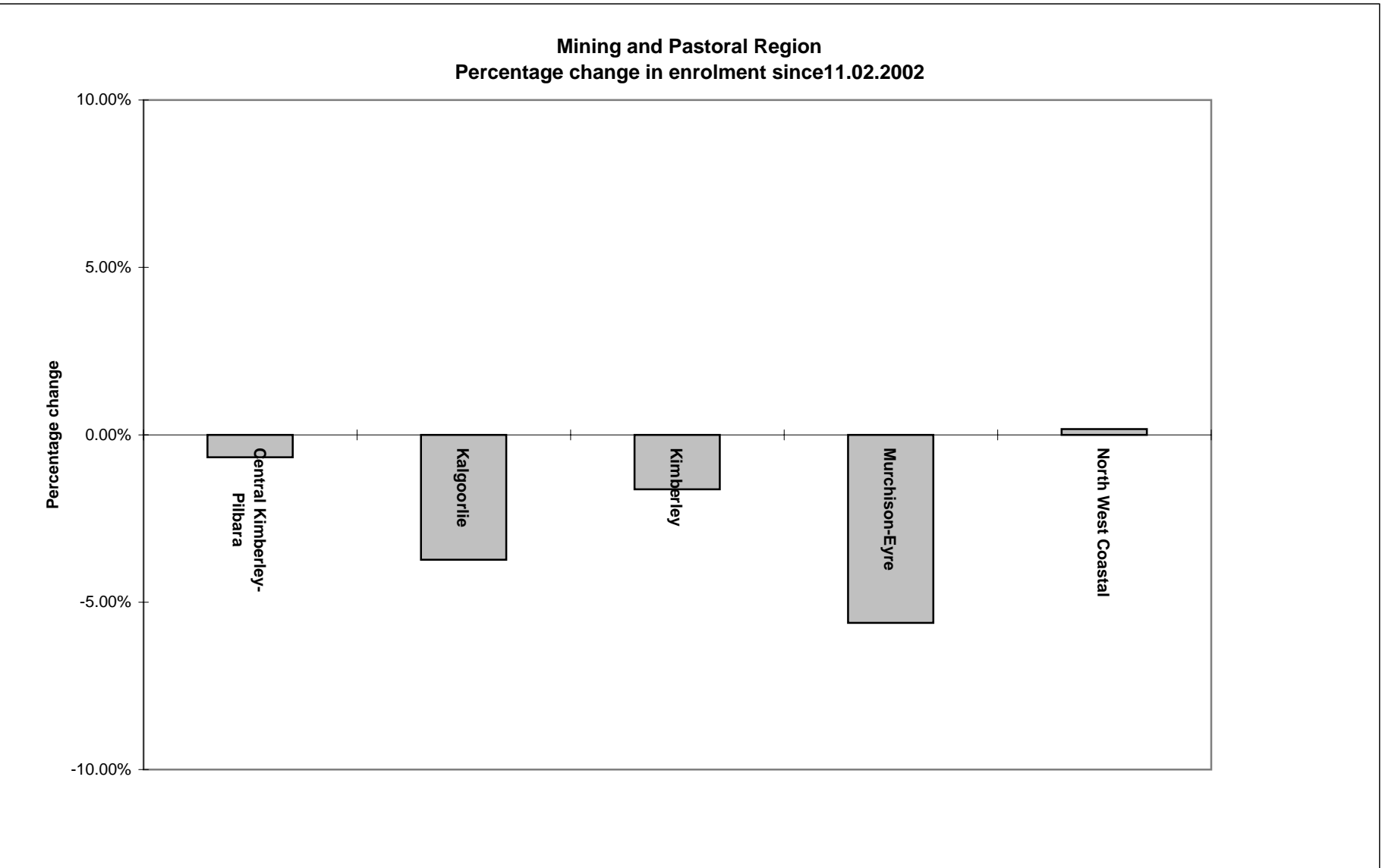
District	Enrolment 11.2.2002	Variation from Country Quotient of 11.2.2002	Enrolment 13.7.2004	Variation from Country Quotient of 13.7.2004	% change in enrolment 11.2.2002 to 13.7.2004
Avon	13,349	-2.82%	13,126	-4.63%	-1.67%
Geraldton	14,193	3.33%	13,891	0.93%	-2.13%
Greenough	13,021	-5.20%	12,973	-5.74%	-0.37%
Merredin	14,244	3.70%	13,523	-1.74%	-5.06%
Moore	12,873	-6.28%	12,772	-7.20%	-0.78%
Roe	13,498	-1.73%	13,354	-2.97%	-1.07%
Wagin	13,699	-0.27%	13,451	-2.27%	-1.81%
Total	94,877		93,090		-1.88%
	Quotient	13,736	Quotient	13,763	

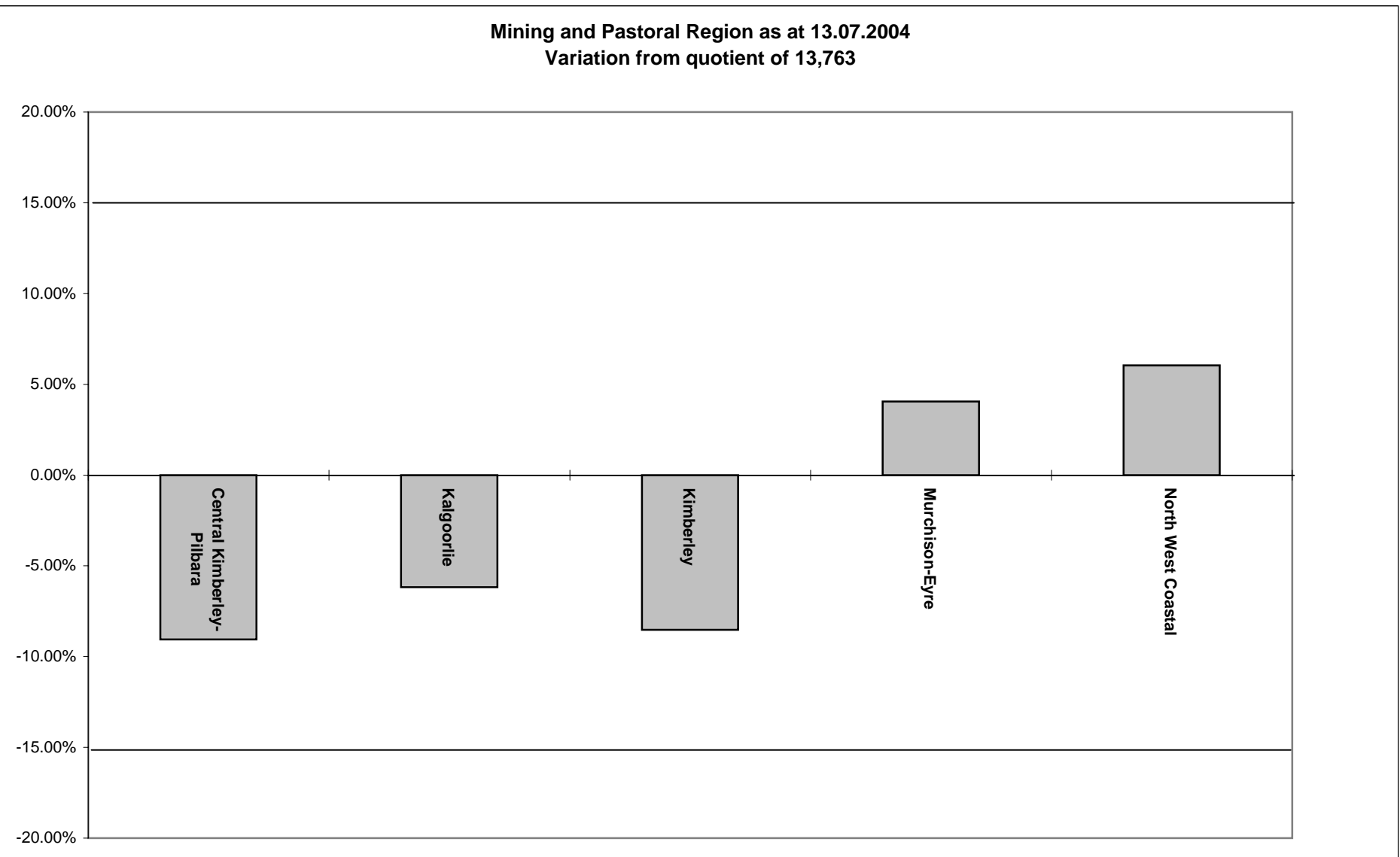




Mining and Pastoral Region

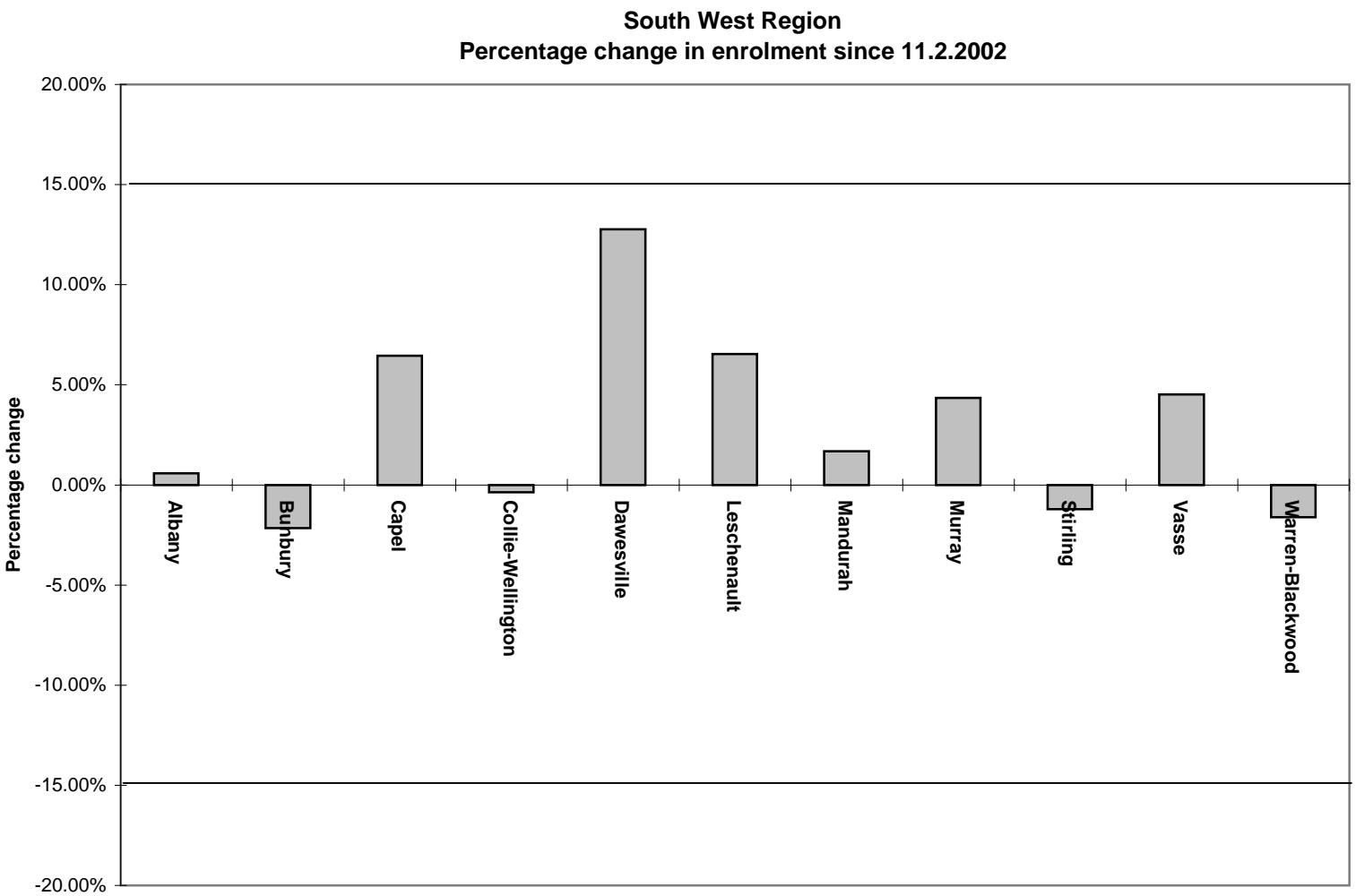
District	Enrolment 11.02.2002	Variation from Country Quotient of 11.02.2002	Enrolment 13.7.2004	Variation from Country Quotient of 13.7.2004	% change in enrolment 11.02.2004 to 13.7.2004
Central Kimberley-Pilbara	12,601	-8.26%	12,516	-9.06%	-0.67%
Kalgoorlie	13,414	-2.34%	12,913	-6.18%	-3.73%
Kimberley	12,797	-6.84%	12,589	-8.53%	-1.63%
Murchison-Eyre	15,174	10.47%	14,321	4.05%	-5.62%
North West Coastal	14,570	6.07%	14,595	6.05%	0.17%
Total	68,556		66,934		-2.37%
	Quotient	13,736	Quotient	13,763	

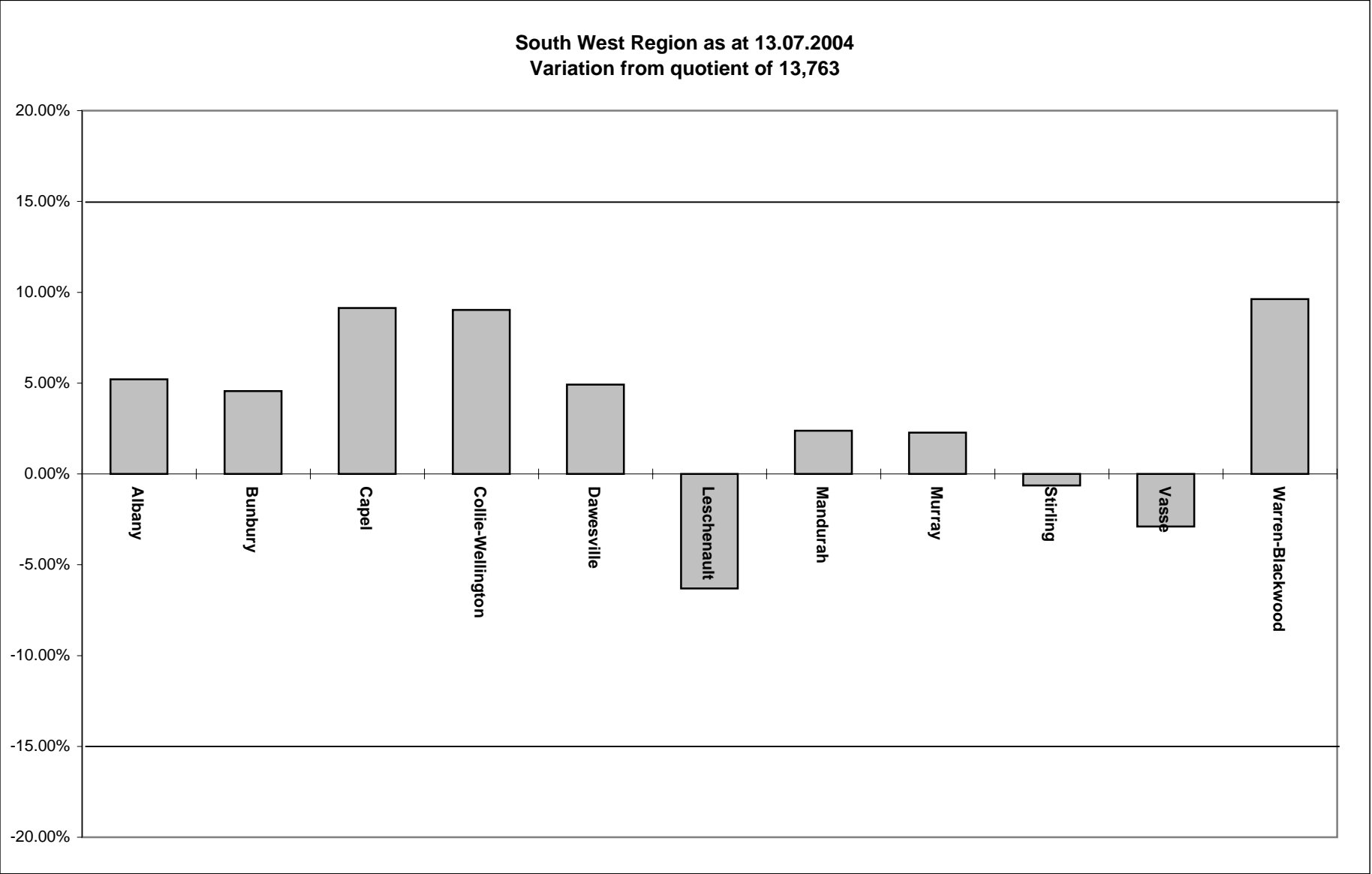




South West Region

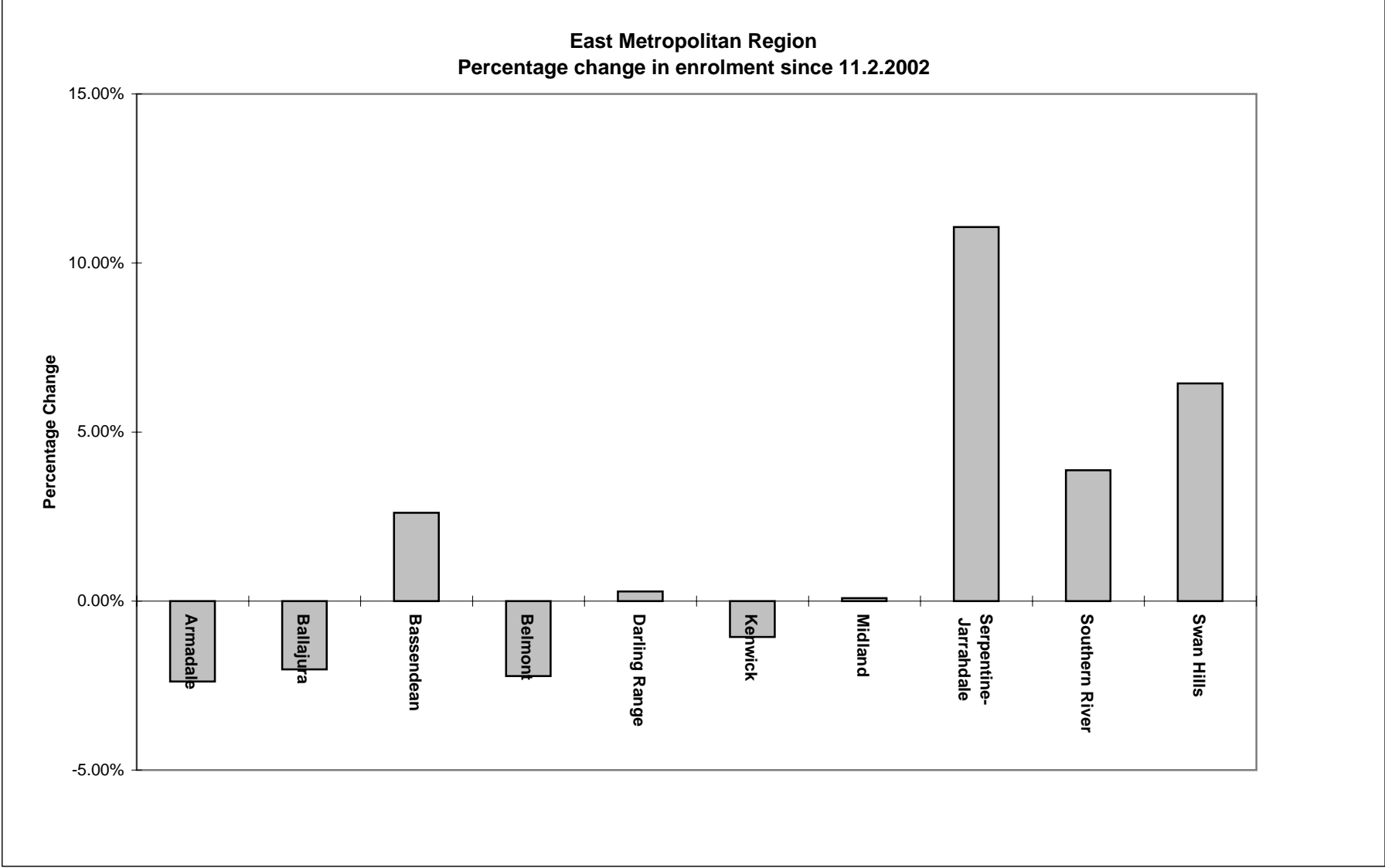
District	Enrolment 11.2.2002	Variation from Country Quotient of 11.2.2002	Enrolment 13.7.2004	Variation from Country Quotient of 13.7.2004	% change in enrolment 7.2.1994 to 13.7.2004
Albany	14,396	4.81%	14,479	5.20%	0.58%
Bunbury	14,709	7.08%	14,391	4.56%	-2.16%
Capel	14,110	2.72%	15,020	9.13%	6.45%
Collie-Wellington	15,060	9.64%	15,006	9.03%	-0.36%
Dawesville	12,804	-6.78%	14,439	4.91%	12.77%
Leschenault	12,104	-11.88%	12,895	-6.31%	6.54%
Mandurah	13,857	0.88%	14,091	2.38%	1.69%
Murray	13,488	-1.81%	14,075	2.27%	4.35%
Stirling	13,843	0.78%	13,676	-0.63%	-1.21%
Vasse	12,788	-6.90%	13,365	-2.89%	4.51%
Warren-Blackwood	15,335	11.64%	15,087	9.62%	-1.62%
Total	152,494		156,524		2.64%
	Quotient	13,736	Quotient	13,763	

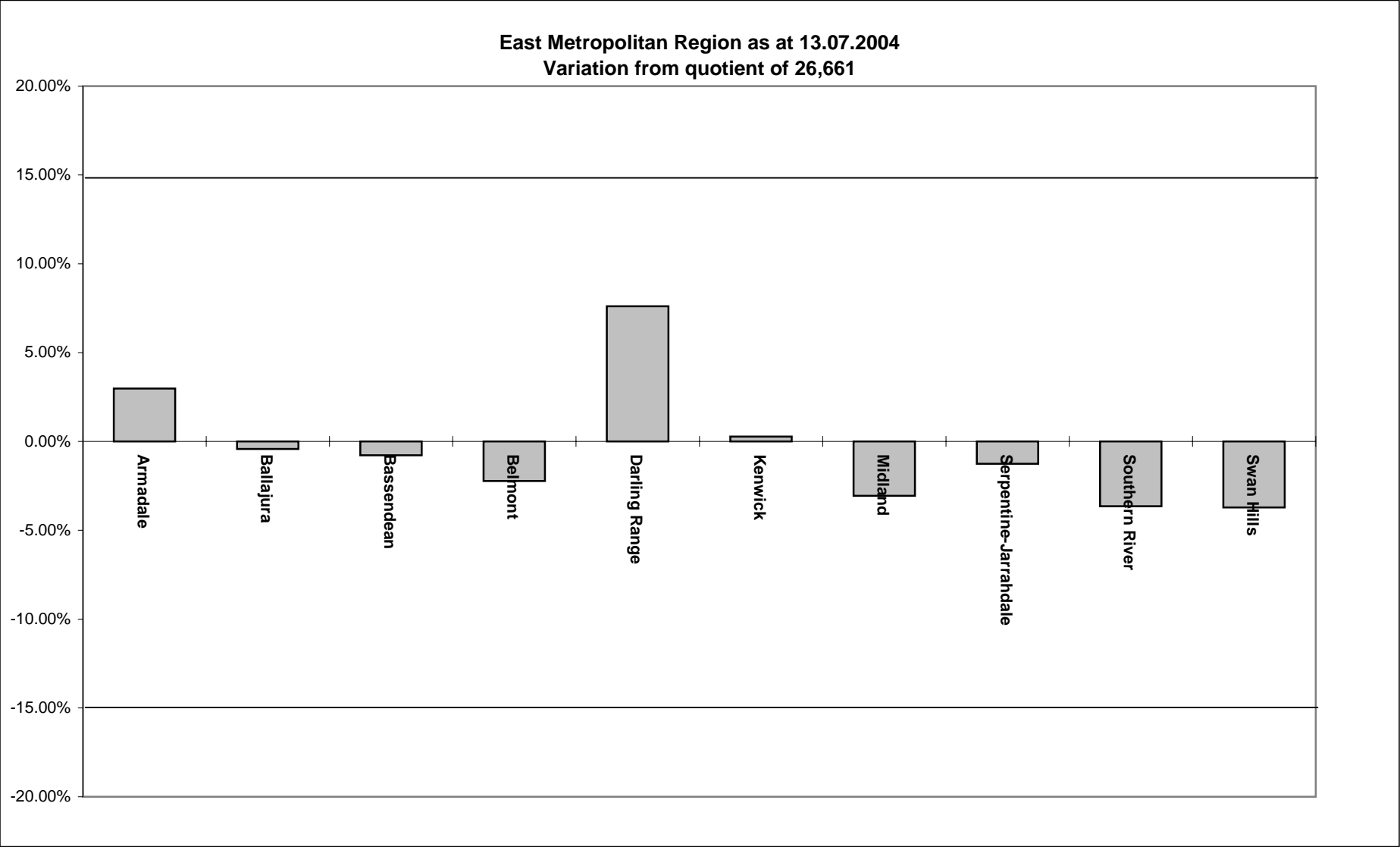




East Metropolitan Region

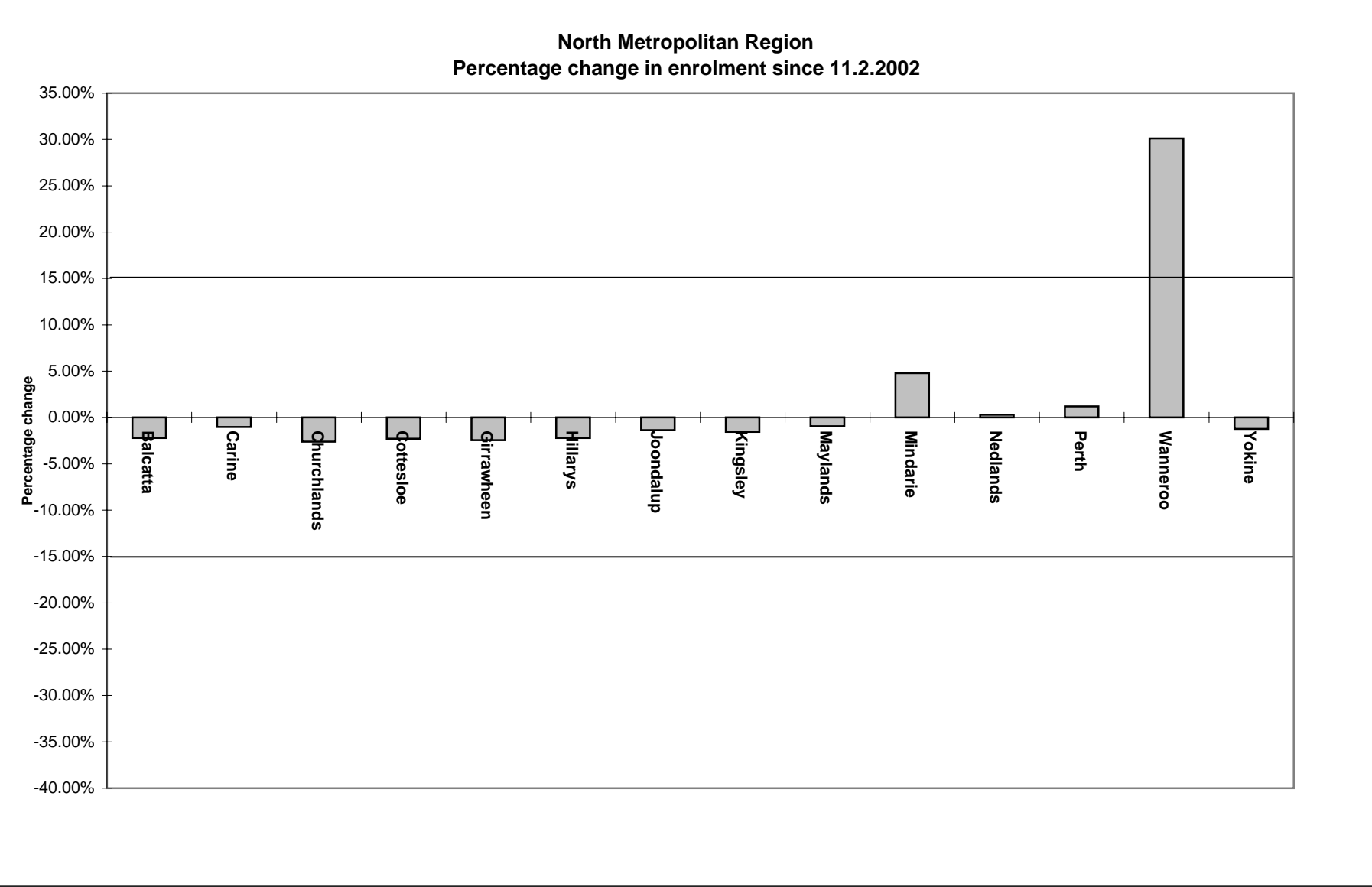
District	Enrolment 11.2.2002	Variation from Metropolitan Quotient of 11.2.2002	Enrolment 13.7.2004	Variation from Metropolitan Quotient of 13.7.2004	% change in enrolment 11.2.2002 to 13.7.2004
Armadale	28,125	6.31%	27,455	2.98%	-2.38%
Ballajura	27,095	2.42%	26,547	-0.43%	-2.02%
Bassendean	25,780	-2.55%	26,453	-0.78%	2.61%
Belmont	26,657	0.77%	26,066	-2.23%	-2.22%
Darling Range	28,609	8.14%	28,691	7.62%	0.29%
Kenwick	27,022	2.15%	26,734	0.28%	-1.07%
Midland	25,823	-2.39%	25,846	-3.06%	0.09%
Serpentine-Jarrahdale	23,702	-10.40%	26,325	-1.26%	11.07%
Southern River	24,732	-6.51%	25,689	-3.64%	3.87%
Swan Hills	24,117	-8.84%	25,670	-3.72%	6.44%
Total	261,662		265,476		1.46%
	Quotient	26,454	Quotient	26,661	

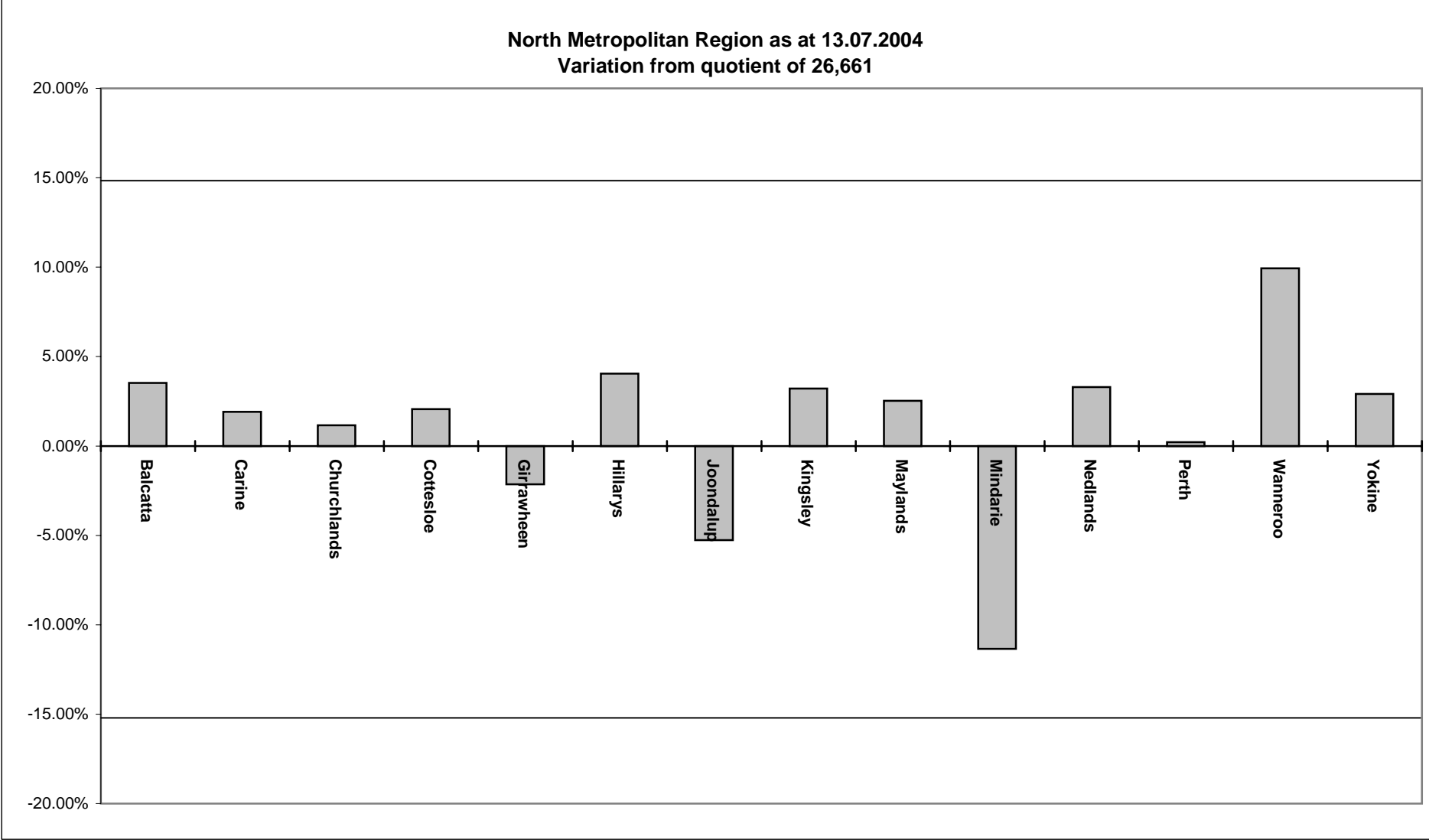




North Metropolitan Region

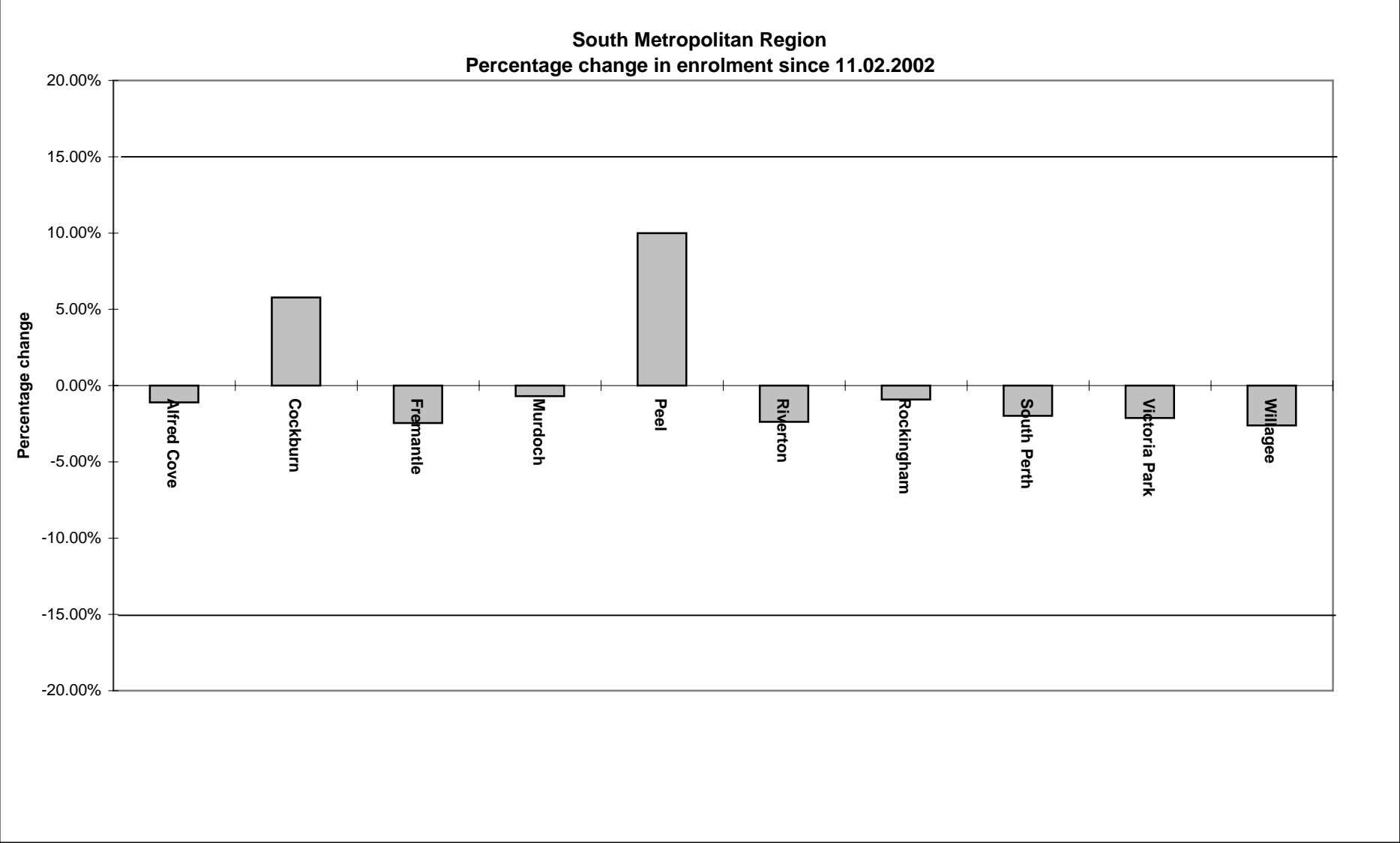
District	Enrolment 11.2.2002	Variation from Metropolitan Quotient of 11.02.2002	Enrolment 13.7.2004	Variation from Metropolitan Quotient of 13.7.2004	% change in enrolment 11.02.2002 to 13.7.2004
Balcatta	28,224	6.69%	27,602	3.53%	-2.20%
Carine	27,453	3.77%	27,171	1.91%	-1.03%
Churchlands	27,686	4.66%	26,968	1.15%	-2.59%
Cottesloe	27,845	5.26%	27,211	2.06%	-2.28%
Girrawheen	26,741	1.08%	26,090	-2.14%	-2.43%
Hillarys	28,364	7.22%	27,741	4.05%	-2.20%
Joondalup	25,607	-3.20%	25,258	-5.26%	-1.36%
Kingsley	27,949	5.65%	27,516	3.21%	-1.55%
Maylands	27,591	4.30%	27,334	2.53%	-0.93%
Mindarie	22,555	-14.74%	23,637	-11.34%	4.80%
Nedlands	27,453	3.77%	27,538	3.29%	0.31%
Perth	26,399	-0.21%	26,718	0.22%	1.21%
Wanneroo	22,525	-14.85%	29,308	9.93%	30.11%
Yokine	27,776	5.00%	27,436	2.91%	-1.22%
Total	374,168		377,528		0.90%
	Quotient	26,454	Quotient	26,661	

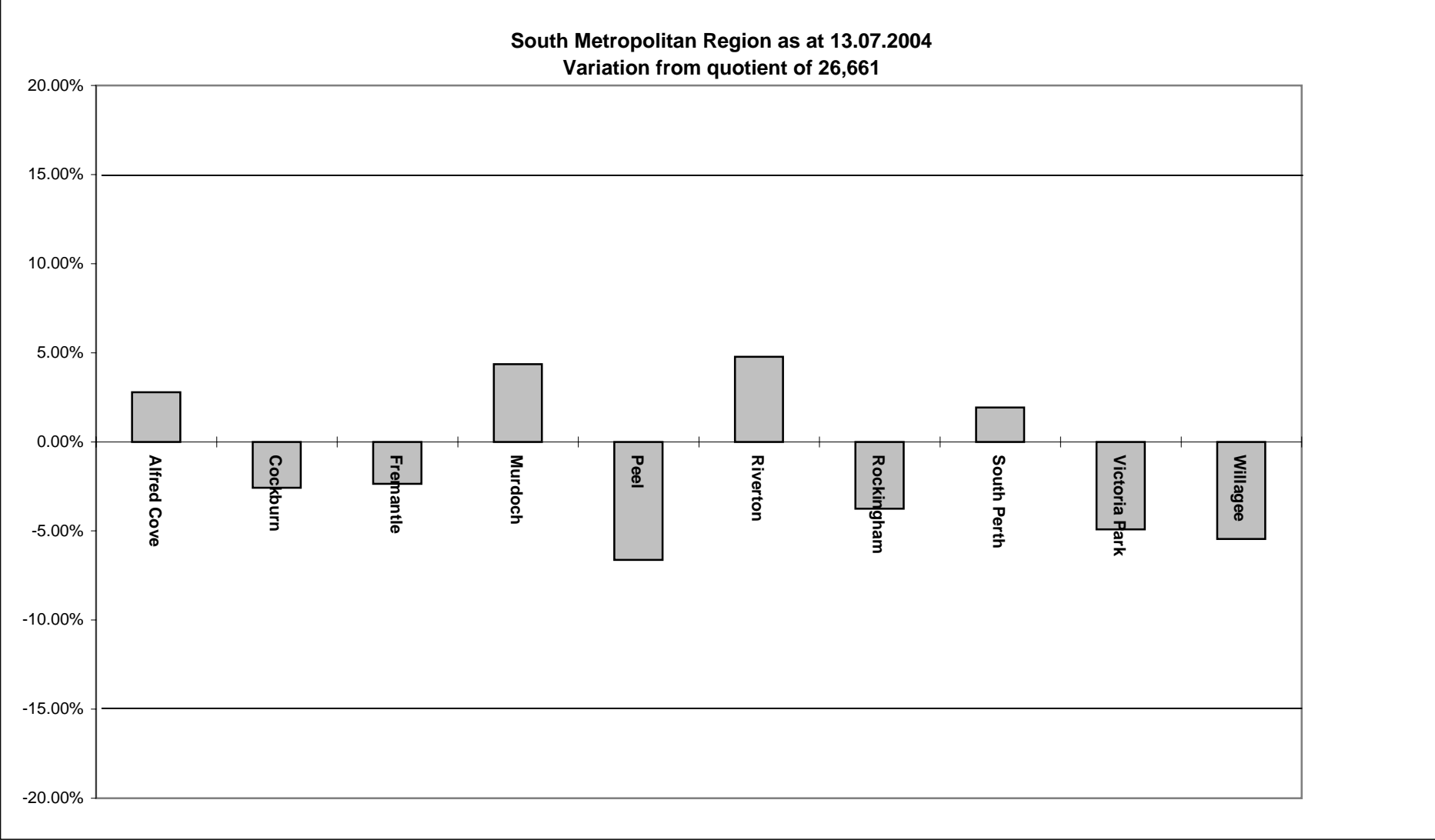




South Metropolitan Region

District	Enrolment 11.2.2002	Variation from Metropolitan Quotient of 30.6.2004	Enrolment 13.7.2004	Variation from Metropolitan Quotient of 13.7.2004	% change in enrolment 11.2.2002 to 13.7.2004
Alfred Cove	27,708	4.74%	27,402	2.78%	-1.10%
Cockburn	24,556	-7.18%	25,975	-2.57%	5.78%
Fremantle	26,689	0.89%	26,032	-2.36%	-2.46%
Murdoch	28,015	5.90%	27,821	4.35%	-0.69%
Peel	22,633	-14.45%	24,896	-6.62%	10.00%
Riverton	28,614	8.16%	27,935	4.78%	-2.37%
Rockingham	25,895	-2.11%	25,660	-3.75%	-0.91%
South Perth	27,725	4.80%	27,175	1.93%	-1.98%
Victoria Park	25,903	-2.08%	25,352	-4.91%	-2.13%
Willagee	25,882	-2.16%	25,207	-5.45%	-2.61%
Total	263,620		263,455		-0.06%
	Quotient	26,454	Quotient	26,661	





Range of Enrolments

Area	11.2.2002		13.7.2004	
	Highest	Lowest	Highest	Lowest
Metropolitan	Riverton 28,614	Wanneroo 22,525	Wanneroo 29,308	Mindarie 23,637
Country	Warren- Blackwood 15,335	Leschenault 12,104	Warren- Blackwood 15,087	Central Kimberley-Pilbara 12,516